





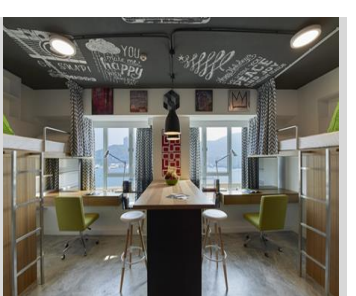


Off-campus Housing - Options in the Neighborhood

Short-term Accommodation

Options	Room types [and facilities]	Room Charges		Remarks	
		Daily Rate (HK\$)	Monthly Rate (HK\$)		
Begonia Residence – Y Hospitality 66 Begonia Road, Yau Yat Chuen, Kowloon Tel: (852) 3443 1881 Fax: (852) 3443 1803 Email: begonia@yhk.com.hk Web: http://www.yhk.com.hk	Studio (single), suite (2 persons) [private bathroom, in-room internet access]	Nil	HK\$ 11,000 (Studio single) – HK\$24,500 (Special Suite) (per month per room) (10% service charge included)	Around 15 minutes' walk to University. (Special rates for CityU)	
YMCA 41 Salisbury Road, Tsimshatsui, Kowloon Tel: (852) 2268 7888 Fax: (852) 2739 9315 Email: room@ymcahk.org.hk Web: http://www.ymcahk.org.hk/sales/html/hst001e.htm	Single, twin/double [private bathroom, in-room free wi-fi]	\$1,200 - \$1,680 (10% service charge NOT included)	Nil	Around 30 minutes from the University by MTR.	
Caritas Bianchi Lodge 4, Cliff Road, Yaumatei, Kowloon Tel : (852) 2388 1111 Fax : (852) 2770 6669 E-mail : cblresv@bianchi-lodge.com Web: http://www.caritas-chs.org.hk/eng/bianchi_lodge.asp	Single twin/double, family room, executive studio [private bathroom, in-room internet access]	\$500up - \$1,365up (10% service charge NOT included)	Nil	Around 30 minutes from the University by MTR.	

<p>Caritas Lodge</p> <p>134 Boundary Street, Kowloon, Hong Kong Tel : (852) 2339 3777 Fax : (852) 2338 2864 Email : reservation@caritaslodge.com Web: http://www.caritas-chs.org.hk/eng/lodge.asp</p>	<p>Twin/double, triple room [private bathroom]</p>	<p>\$720 - \$1,600 (single twin)</p> <p>(10% service charge NOT included)</p>	<p>\$26,400 up</p>	<p>Around 20 minutes from the University by MTR or bus. (Special Rate for CityU)</p>	
<p>The Grand Blossom</p> <p>No.123 Bulkeley Street, Hung Hom, Kowloon. Tel: (852) 8107 6602 Email: property@hkctl.com Web: http://www.grandblossom.com.hk/index.html</p>	<p>2 or 3 bedroom serviced apartments [in-room wifi at HK\$200 / month]</p>	<p>Nil</p>	<p>\$22,000up / apartment (min. 1 month)</p>	<p>Around 30 minutes from the University by MTR.</p>	
<p>Chi Residences 393</p> <p>393 Shanghai Street, Yaumatei, Kowloon Tel: (852) 3443 6888 Fax: (852) 2854 0370 Email: stay@chi-residences.com Web: http://www.chi-residences.com</p>	<p>Studios [in-room wifi]</p>	<p>Available on Request</p>	<p>\$17,600 - \$19,800 (min. 1 month)</p> <p>Electricity charges not included. Optional unlimited electricity packages at \$300 / month.</p>	<p>Around 20 minutes from the University by MTR.</p>	
<p>Campus Hong Kong</p> <p>123 Castle Peak Road, Yau Kom Tau, Tsuen Wan, Hong Kong Tel: (852) 2945 1111 Email: RSVN@CAMPUSHK.COM Web: http://www.campushk.com/</p>	<p>4-persons Student Room</p>	<p>Nil</p>	<p>HK\$6,000 per bed per room</p>	<p>Around 45 minutes from the University by MTR. (Special rates for CityU)</p>	

The Mahjong

10-16 Pak Tai Street, To Kwa Wan, Kowloon
 Tel: (852) 2705 1869
 Email: info@themahjonghk.com
 Web: <http://themahjonghk.com/>

Deluxe Queen Pod,
 Single Pod (Mixed /
 Female)

\$250 - \$450

Single Pod - \$5,000;
 Deluxe Queen Pod -
 \$9,000

Around 40 minutes
 from the University by
 minibus and MTR.



Harbourfront Horizon

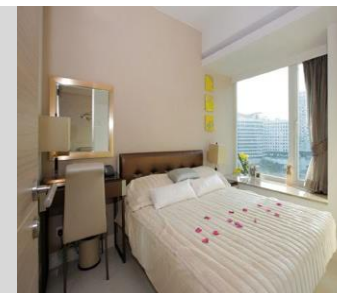
8 Hung Luen Road, Hunghom Bay, Kowloon, Hong Kong
 Tel: (852) 3157 8888
 Email: info@horizonhotels.com.hk
 Web: <http://horizonhotels.com.hk>

2-/3-bedroom suites
 [furnished private pantry,
 living, dining, and
 bathroom]

Nil

HK\$ 25,800 -
 \$31,800 per month
 (1-5 months)

Around 15 minutes
 from the University by
 MTR



HK\$ 22,000 -
 \$29,000 per month
 (6-12 months)

Harbourview Horizon

12 Hung Lok Road, Hunghom Bay, Kowloon, Hong Kong
 Tel: (852) 3157 8888
 Email: info@horizonhotels.com.hk
 Web: <http://horizonhotels.com.hk>

2-/3-bedroom suites
 [furnished private pantry,
 living, dining, and
 bathroom]

Nil

HK\$ 21,800 -
 \$25,800 per month
 (1-5 months)

Around 15 minutes
 from the University by
 MTR



HK\$ 18,000 -
 \$22,000 per month
 (6-12 months)

Horizon Suite Hotel

29 On Chun Street, Ma On Shan, Shatin, Hong Kong
 Tel: (852) 3157 8888
 Email: info@horizonhotels.com.hk
 Web: <http://horizonhotels.com.hk>

2-/3-bedroom suites
 [furnished private pantry,
 living, dining, and
 bathroom]

Nil

HK\$ 19,000 – 23,000
 per month (2-bed)
 (7-12 months)

Around 30 minutes
 from the University by
 MTR

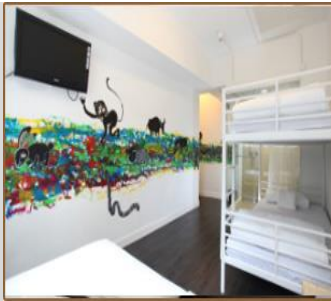


HK\$ 32,000 – 37,000
 per month (3-bed)
 (7-12 months)

The Apex Horizon
 33 Wo Yi Hop Road, Kwai Chung, Hong Kong
 Tel: (852) 3157 8888
 Email: info@horizonhotels.com.hk
 Web: <http://horizonhotels.com.hk>

Hop Inn
 5/F, Lyton Building, 36 Mody Road, Tsim Sha Tsui, Kowloon, Hong Kong
 Tel: (852) 3107 1418
 Email: enquiry@hopinn.hk
 Web: www.hopinn.hk

2-/3-bedroom suites [furnished private pantry, living, dining, and bathroom]	Nil	HK\$ 14,000 – 20,000 per month (2-bed) (6-12 months) HK\$ 19,000 – 25,000 per month (3-bed) (6-12 months)	Around 30 minutes from the University by MTR
Single/ Double/ Quadruple	HK\$430-550 (Single) HK\$540-490 (Double/Twin) HK\$1,080-1,280 (Quadruple)	HK\$ 2,500 per bed place	Around 20 minutes from the University by MTR



Last updated: August 2015

Notes:
 The above information is for reference only. It does not constitute endorsement by the University. Please note that room charges are subject to change without prior notice. Students should contact the hostels and hotels directly for the details of their rates.