

Photo Requirements for Student Identity Card

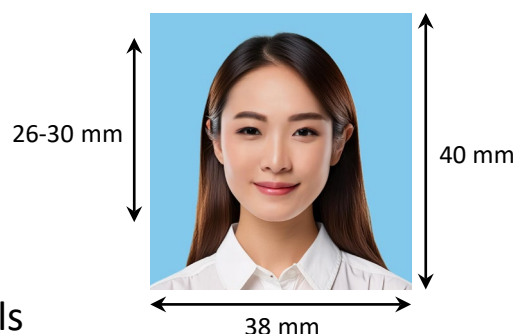
- In colour
- With a plain light-coloured background
- Taken recently
- Showing full frontal face and body
- With a neutral facial expression

File Format

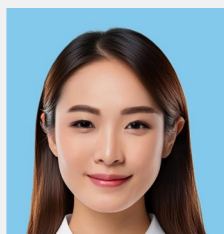
Image type : JPEG
File size : 2MB or below

Dimension

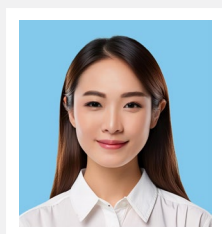
Photo size : 38 (W) x 40 (H) mm
Image size : at least 450 (W) x 475 (H) pixels



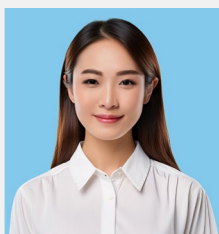
Examples of Unacceptable Photos



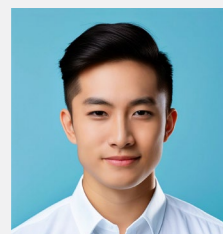
Cropped shoulder



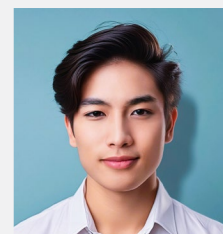
Frame in image



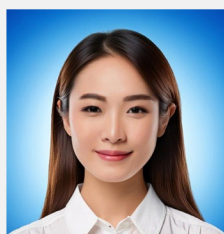
Too far from camera



Shadow on face



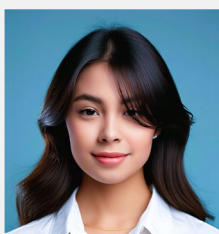
Shadow on background



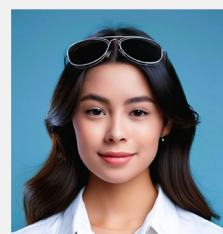
Background not plain



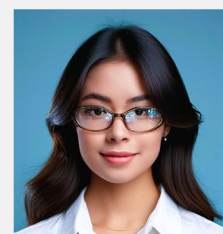
Face / body not full frontal



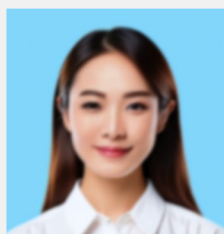
Eye covered



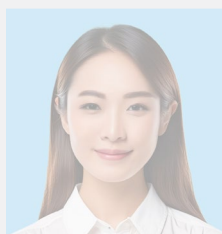
Head covered



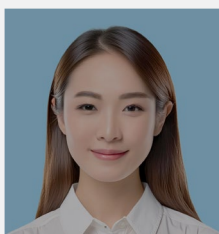
Reflection on glasses / face



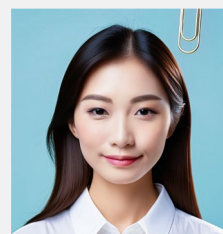
Blurry image



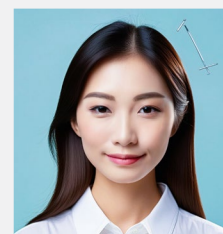
Too light



Too dark



Clipped



Stapled