



香港城市大學
City University of Hong Kong

Environmental Report

2022-2023

專業 創新 胸懷全球
Professional · Creative
For The World

Content

Message from the Director	Page 3
Executive Summary	Page 4
1. Strategic Plan and KPI	Page 5
2. Waste Management	Page 6
3. Water Management	Page 18
4. Energy Management	Page 19
5. Air Quality Management	Page 29
6. Campus Greening	Page 30
7. Sustainability in Residential Estates	Page 39
8. Activities and Collaborations	Page 45
9. Recognitions and Awards	Page 68
10. Looking Ahead	Page 71
Appendix	Page 72

Message from the Director

The 2022-2023 Environmental Report covers the period from 1 July 2022 to 30 June 2023. During the reporting year, the impact of COVID-19 pandemic outbreak reduced significantly. The whole campus has resumed normal during the reporting period and the campus was overwhelmed with various activities. Along with that is the challenge on Green House Gas reduction when compared to the COVID-19 years. City University of Hong Kong (CityU) strived through all the unprecedented challenges to uphold our social responsibilities, particularly in the areas of low carbon lifestyles, carbon neutrality, Municipal Solid Waste (MSW) Charging Scheme, students environmental behavior and caring for society to ensure a sustainable future.

In the reporting year, the Facilities Management Office (FMO) of CityU dedicated our continued efforts in promoting and reducing Municipal Solid Waste (MSW) through year-round campaigns and activities. A series of promotion and education programmes have been organised to increase CityU community's awareness on the new MSW Charging Scheme which is going to be implemented in the first quarter of 2024. On the other hand, the collaboration among local eight UGC-funded universities increased continuously under the three-year project named Jockey Club Sustainable Campus Consumer Programme that was officially launched in 2021. The project aimed to promote the United Nations Sustainable Development Goal #12: Responsible Consumption and Production.

We welcome Year 2024 with much faith and hope in striving for no carbon, no plastic and zero waste. CityU will continue her commitment to the health and safety of our community and society. FMO will embrace the unforeseeable future and press on with the promotion of green living and conservation of the environment.

We hope that the sharing in this report will contribute towards educating our key audiences and help fostering greater environmental awareness. Please enjoy reading.

Brenda Lai
Director of Facilities Management

Executive Summary

Key Performance Indicator (KPI)

Using the baseline year of 2018-2019, the University sets a target for a reduction of 8% of Greenhouse Gas (GHG) Emission per floor area on campus by 2030. In 2022-2023, the reduction in GHG Emissions per floor area is 15.38% compared with the baseline year.

Major Achievements and Activities in 2022-2023

- Organised Green Living @ CityU 2022 with the theme of “WasteSmart Money\$mart”, which echoed the year-round CityU WasteSmart Money\$mart Campaign (城大「智慳」「識減」大行動) of 2022. A total of 15 programmes were held which aroused the awareness of the CityU community. The signature event was WasteSmart Money\$mart Pledge that made by both individuals and departments. 52 departments made their pledges to implement 5Rs which were stipulated under CityU Environmental Policy (Rethink, Reduce, Reuse, Restore and Recycle) waste management approach in their departments. This not only reflected a full commitment from the top management of the University on waste reduction, but also encouraged members of the CityU community to make their commitment to reduce waste in their daily living.
- The “CityU WasteSmart Money\$mart Campaign” (城大「智慳」「識減」大行動) went to its second half of 2022 with the aim to tackle the enactment of the Municipal Solid Waste (MSW) Charging Scheme. One of the signature event is Housekeeping Campaign. We have reached all offices of the University and arranged waste dumping and recycling during the exercise. 34,320L of waste and 27,060L of waste paper for recycling were collected.
- Jointly organised by the eight UGC funded universities, the three-year project of Jockey Club Sustainable Campus Consumer Programme (JCSCC) continued in the reporting year. With the aim to promote meal container BYO and reduce single use plastics, we also cooperate with the Environmental Campaign Committee (ECC) of the HKSAR to organise “ben don go!” campaign on campus. CityU was the first University to host the campaign on campus. We had 388 reusable meal containers being checked out and reduced the use of single-use plastic.

Environmental Data

Waste Management

- Diverted over 103 tonnes of solid waste from landfills.
- Recycled about 47.7 tonnes of food waste.

Water Management

- Consumed 322,580m³ water on campus.
- 5,740 m³ of grey water recycled for irrigation, which represents 1.8% of total water consumption for cleansing and irrigation.

Energy Management

- Consumed 70.2 million kWh electrical energy.

Awards

- Awarded the Silver Award and Award for Promotion under Commendation Scheme on Source Separation of Commercial and Industrial Waste by the Environmental Protection Department (EPD) of HKSAR Government.
- Awarded the HKAEE Certificate of Merit that organized by the Environmental Campaign Committee (ECC) of HKSAR Government.
- Awarded an “Excellence Level” Wastewi\$e Certificate by the ECC of HKSAR Government in succession of 21 years.
- Awarded an “Excellence Level” Engerywi\$e Certificate by the ECC of HKSAR Government.
- Awarded Indoor Air Quality Certificated Award in recognition of being the 10 highest participation in the IAQ Certification Scheme in 2021.

1. Strategic Plan and KPI

According to the Strategic Plan 2020-2025 of the University, CityU is committed to promote a green campus and sustainability initiatives

1. Continue to promote a sustainable green campus in response to the global climate emergency, and to formulate and implement policies for the University towards the ultimate goal of becoming carbon-neutral.
2. Expand collaborations among units to enhance sustainability and student engagement to develop a model for a green campus that can be shared across Hong Kong and the region.
3. Expand sustainability education.

Key Performance Indicator (KPI)

To achieve a carbon-neutral campus, our immediate focus will be placed on carbon reduction by enhancing the energy efficiency of both new and existing buildings. Using the baseline year of 2018/19, we target a reduction of 8% of GHG Emission per floor area (e.g., direct GHG emissions/removals and energy indirect GHG emissions) on campus by 2030.



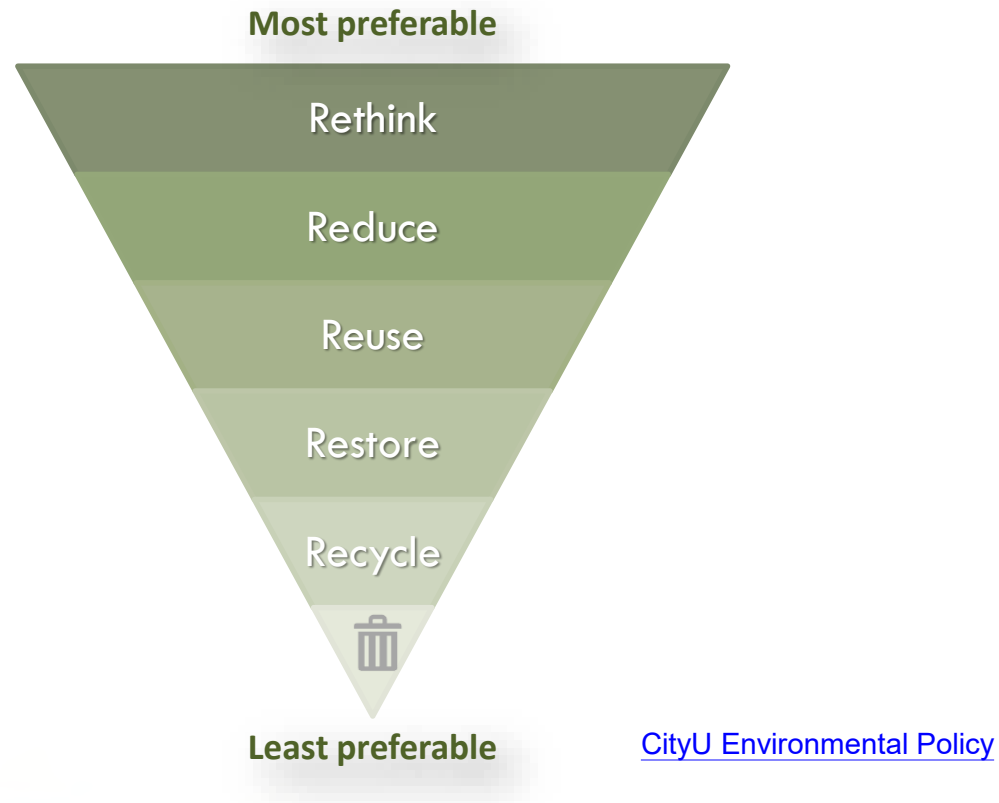
The graphic features the CityU logo (City University of Hong Kong) in the top left. The main title is 'Strategic Plan 2020-2025'. Below it, it states 'CityU is committed...' followed by three bullet points: 'To promote a sustainable green campus for the University towards carbon-neutral', 'To develop a model for a green campus', and 'To expand sustainability education'. The central focus is the 'Key Performance Indicator (KPI)', which is 'Using the baseline year of 2018/19, CityU targets a reduction of 8% of Green House Gas (GHG) Emission per floor area on campus by 2030'. An illustration shows a hand pointing at a globe with a cloud labeled 'GHG' and a green arrow pointing down with '8%' next to it.

	2022-2023
% Change in GHG Emissions per floor area compared with baseline year (2018-2019)	-15.38%

2. Waste Management

Waste Management Approach

CityU continues to adopt a 5R's approach in waste management, which includes Rethink, Reduce, Reuse, Restore and Recycle.



2. Waste Management

Rethink and Reuse

FMO supports the campus greening and makes every endeavour in improving and maintaining a green environment for the enjoyment of the University students, faculty, staff and visitors.



Use of reusable display units as temporary hoarding for new entrance of swimming pool so as to save cost for making new wooden boards by CDO.



The wheels of folding tables for events are easily broken. They were replaced with heavy-duty wheels to enhance durability so as to save resource for frequent maintenance.

2. Waste Management

Reduce

An online Risk Assessment Reporting System (RARS) has been introduced throughout the University. All research activities are required to go through an online risk assessment before the commencement of the projects. Through the online system, the paper that required for doing the risk assessment reduced significantly. There were about 250 online risk assessment reports submitted last year. Generally, about 20 sheets of A4 paper are saved in the reporting and distribution process, a total of 5,000 sheets A4 paper were saved in last year, which is equivalent to 25 kg of paper or 0.5 tree.

On the other hand, the University has developed a series of online safety training modules for all full time staff and postgraduate students. Some training modules are also used for orientation of undergraduate students. The introducing of online safety training significantly reduced the training record by using paper.

In addition, our existing online “Chemical Control System” (CCS) provides a convenient and greener way for University members to purchase chemicals on campus. In the reporting period, about 8,250 orders were made via CCS. Assuming 2 sheets of A4 paper are saved in a purchase process, a total of 16,500 sheets of A4 paper were saved in the reporting year which is equivalent to 83 kg of paper or 1.5 trees. By using the system, there is a better control on the use, storage and disposal of chemicals, hence helps reduce the wastage and generation of chemical waste.



On line safety training

2. Waste Management

Reuse of Potted Plants for Major Events and Festivals

Potted plants including evergreen plants and seasonal flowers were provided for major university events and festivals (e.g. Commencement, Christmas and Chinese New Year). In order to reduce landscape waste, evergreen potted plants for events were re-used or kept at the nursery for future use while some were planted in landscape areas to enhance greening effect.



(Potted Plants were re-used after Events)



(Planting of Citrus at Roof Garden in LI)



(Nursery)

2. Waste Management

Recycling of Tree Waste

For waste reduction, tree waste such as branches, tree trunks and leaves generated from pruning and felling works were either shredded in-situ or transported to Y·PARK for shredding.

The tree waste collected in-situ and from Y·PARK were used for mulching purpose. Totally, approx. 12,550 kg tree waste were delivered to Y·Park for recycling and 10,050 kg wood chips were applied in landscape areas during the reporting period.



(Student Residence)



(Cheng Yick-chi Building)



(Collection of wood chips from Y·PARK)



(Delivery of tree waste to Y·PARK)

2. Waste Management

Reuse and Donation

Items	2021 - 2022	2022 - 2023
Books (kg)	5,371	192
Mooncakes (pcs)	59	18
Plant waste (kg)	7,240	12,550

2. Waste Management

Recycle

Recyclables	2021 - 2022	2022 - 2023	Difference	%
Waste paper recycled (kg)	60,476	72,820	12,344	20.41
Metals recycled (kg)	146.7	169.2	23	15.34
Plastic bottles recycled (kg)	333.5	330	-4	-1.05
Printer cartridges recycled (kg)	195.2	260.8	66	33.61
Compact discs recycled (kg)	28	36.1	8	28.93
Mercury-containing fluorescent tubes and lamps recycled (kg)	12,400	11,000	-1,400	-11.29
Green waste and plant trimmings reused (kg)	226	10,150	9,924	4391.15
Glass bottles recycled (kg)	7731	8,773	1,042	13.48
Rechargeable batteries recycled (kg)	55	36	-19	-34.55
Used Lai See packets (kg)	45	50	5	11.11
No. of plastic straws saved (pieces)	1,200,000	1,200,000	0	0.00
Municipal Solid Waste (MSW)				
Total municipal solid waste (kg)	1,258,707	1,233,727	-24,980	-1.98

2022 - 2023

Total Recyclables:
103 tonnes

Total MSW:
1,233 tonnes

2. Waste Management

Recycle - Food Waste

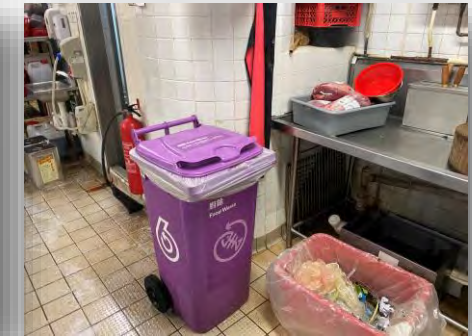
The University always makes use of each opportunity in applying green measures on campus. Cater service providers are required to sort, collect and recycle food waste. This is specifically stated in the catering services contract.

All caterers on campus collect food waste generated from their respective catering outlets and recycle it according to the requirements laid down in their catering services contracts. FMO continues to play the role of monitoring. FMO inspects catering outlets on a regular basis to check that proper separation, collection and recycling are carried out. We conducted a food waste management audit to various catering outlets in the reporting year and gave our findings to them for continuous improvement. To echo the food waste collection pilot scheme offered by EPD, 8 catering outlets joined the scheme and their food waste were collected by the food waste collector contracted by EPD while other catering outlets continued collect their food waste for recycling.

Summary of Food Waste Recycled :

	2021 - 2022	2022 - 2023
Food waste collected and recycled for making fish / animal feed or fertilizer (kg)	33,848	47,689

Compared with the previous year, the recorded amount of food waste collected and increased which could reflect we are resuming normal since the outbreak of COVID-19 throughout the reporting period. The amount of food waste collected increased significantly by 41%.



Caterers collected their food waste and disposed of them properly.

2. Waste Management

New Installation of Smart Recycling Bins

In collaboration with Environmental Protection Department (EPD), two sets of smart recycling bins have been installed on Campus and at Student Residence respectively in early May 2023. Staff and students can earn GREEN\$ points when submitting recyclables. They can also join the GREEN\$ membership via the GREEN\$ Mobile App.



Smart Recycling Bins on Campus



Smart Recycling Bins at Student Residence

2. Waste Management

Recycling of Batteries

More than 140 different types of batteries for Extra-Low Voltage (ELV) Systems have been sent to collector for recycling.

Type	Weight
Walkie Talkie Battery	5.94kg
Portable Battery for Reader	5.12kg
Portable Battery	0.27kg



Walkie talkie battery



Portable battery



Portable battery for Reader

2. Waste Management

Hazardous Waste

Quantity of hazardous waste disposed of in year 2021-2022 and year 2022-2023:

	2021 - 2022	2022 - 2023
Liquid Chemical Waste # (L)	25,330	25,920
Solid Chemical Waste # (kg)	12,980	15,560
Clinical Waste * (kg)	3,717	4,167
Liquid Radioactive Waste	14.014 μ Ci	9.242 μ Ci
Solid Radioactive Waste	0.95 μ Ci	0.15 μ Ci

Remark:

- # As defined under the Waste Disposal Ordinance (Cap. 354). These wastes include fluorescent tubes, lamps, batteries, oily rags, paint pails, etc.
- * Mainly blood contaminated waste from Young Chung-Yee Health Centre of the University and dead animals from laboratories.

2. Waste Management

Hazardous Waste

Lead acid containing batteries were collected by licensed collectors to ensure proper disposal.



3. Water Management

Water Consumption and Recycling

Compared with year 2021-2022, the annual fresh water consumption has increased as all activities resumed normal after the outbreak of COVID-19. The following particulars are observed:

- a) Portable water consumption increased by 22.56%. This might be more occupants to use portable water on campus; and
- b) The cleansing and irrigation water consumption increased by 12.05%. This might be due to more water used for cleansing; and
- c) The water consumption for cooling tower of air-conditioning system increased slightly by 4.12%, which reasonably stable compared with last year.
- d) The swimming pool was closed in last year. However, it was reopened on 6 June 2023. The water consumption increased by 234%.
- e) 5,740 m³ greywater was collected from the wash hand basin and condensate water of the central air conditioning system (represented 1.8% of total water consumption for cleansing and irrigation).

	2021-2022	2022-2023	Difference	%
Potable (1000 m³)	91.71	112.4	20.69	22.56%
Cleansing & Irrigation (1000 m³)	60.27	67.53	7.26	12.05%
A/C (1000 m³)	134.76	140.31	5.55	4.12%
Swimming pool (1000 m³)	0	2.34	2.34	234%
Grey water recycled (1000 m³)	0.74	5.74	5	675.68%

4. Energy Management

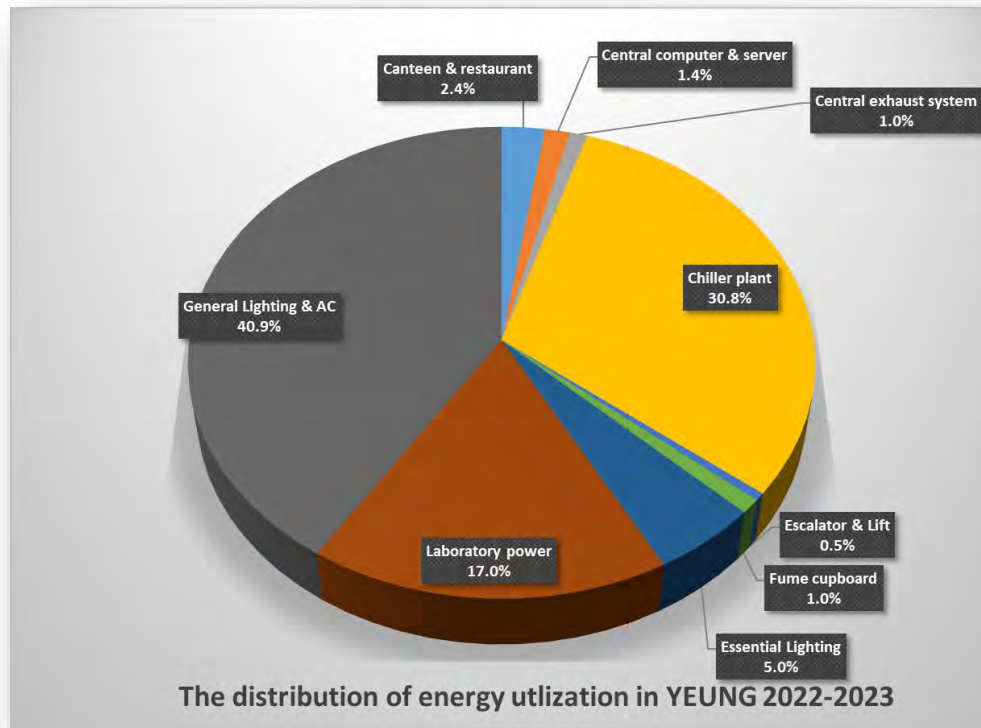
Energy Consumption

The total annual electricity consumption for 2022-2023 was 70.2 million kWh. For all buildings, the electricity consumption was increased. This might be due to the increase of air-condition load on campus as all activities resumed normal after the outbreak of COVID-19 and electricity usage for powerful computational platform in CMC. Compared with year 2021-2022, the total annual electricity consumption was increased by 3%.

Building	2021 - 2022 (mil kWh)	2022 - 2023 (mil kWh)	Difference (mil kWh)	%
YEUNG	48.2	49.1	0.9	1.9%
LI	5.8	6.3	0.5	8.6%
LAU	7.4	7.5	0.1	1.4%
CMC	6.8	7.3	0.5	7.4%
Total	68.2	70.2	2.0	3.0%

4. Energy Management

Energy Consumption - YEUNG



- General Lighting & AC 40.9%
- Chiller Plant 30.8%
- Laboratory Power 17.0%
- Essential Lighting 5.0%
- Central Computer and Server 1.4%
- Canteen & restaurant 2.4%
- Fume cupboard 1.0%
- Central Exhaust System 1.0%
- Lift & Escalator 0.5%

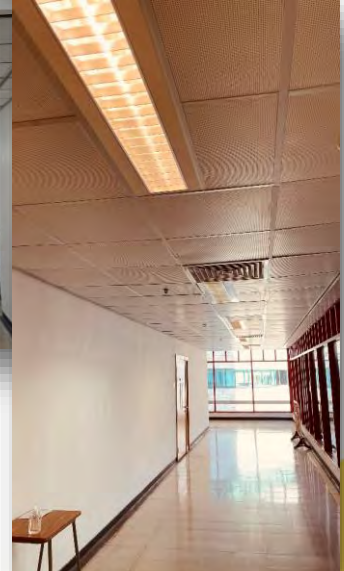
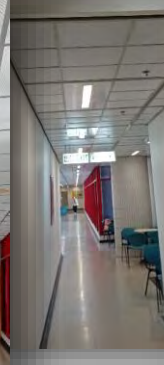
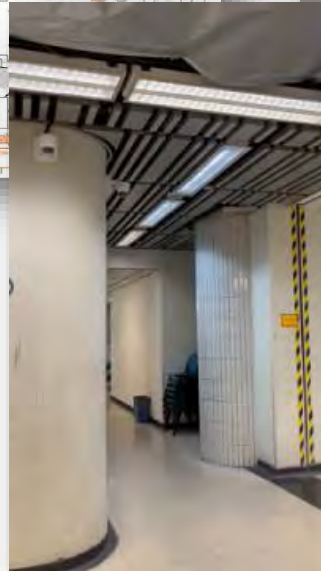
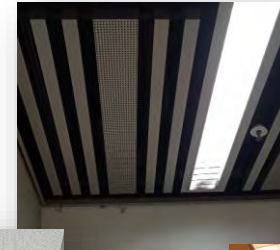
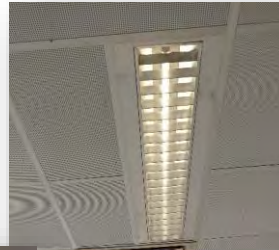
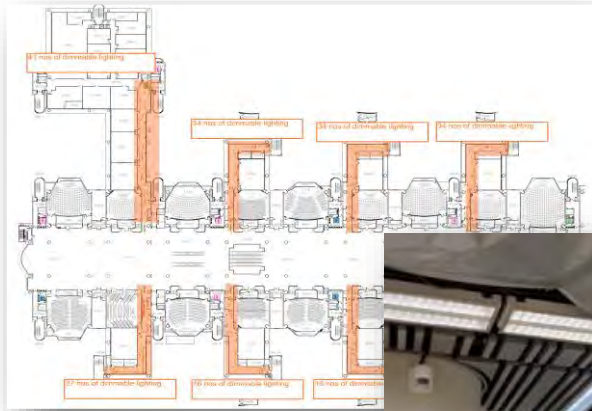


The distribution of energy utilisation in YEUNG

4. Energy Management

Energy Saving Initiatives

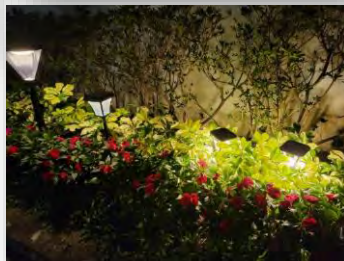
- Replace the traditional fluorescent tubes into dimmable LED light tubes in YEUNG communal corridor area for energy saving
- Replace the traditional light fitting into LED panel lights in YEUNG for energy saving



4. Energy Management

Energy Saving Initiatives

- Installation of solar lights in outdoor areas



About 50 solar lamps were installed on campus

4. Energy Management

Energy Saving Initiatives

- Use solar panel lights in outdoor areas



- Installation of WiFi type of power meter for energy analysis



4. Energy Management

Energy Saving Initiatives



Switching off the lighting and air conditioning in one area in LI 3/F Canteen after 2pm for energy saving

Solar Panel Installation



25 solar panels were installed on the rooftop of Hall 10 in Student Residence

- Replacement of the Existing solar panel, inverter and mis. equipment
- Connect to CLP power grid – FIT Scheme Application



New installed PV Panel

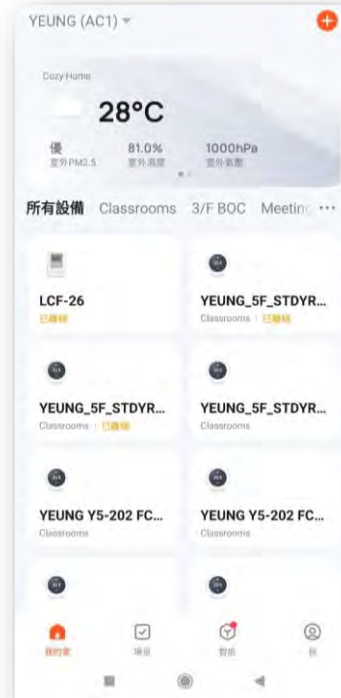
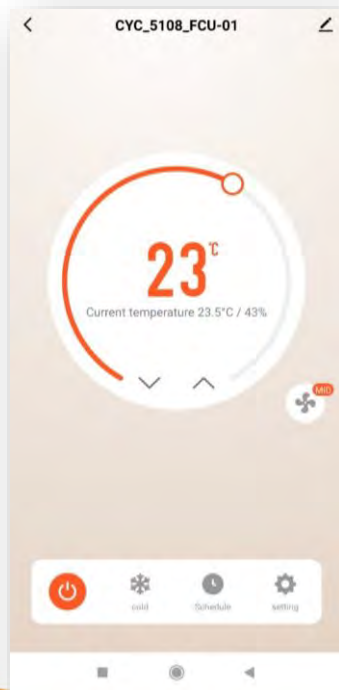


New installed inverter

4. Energy Management

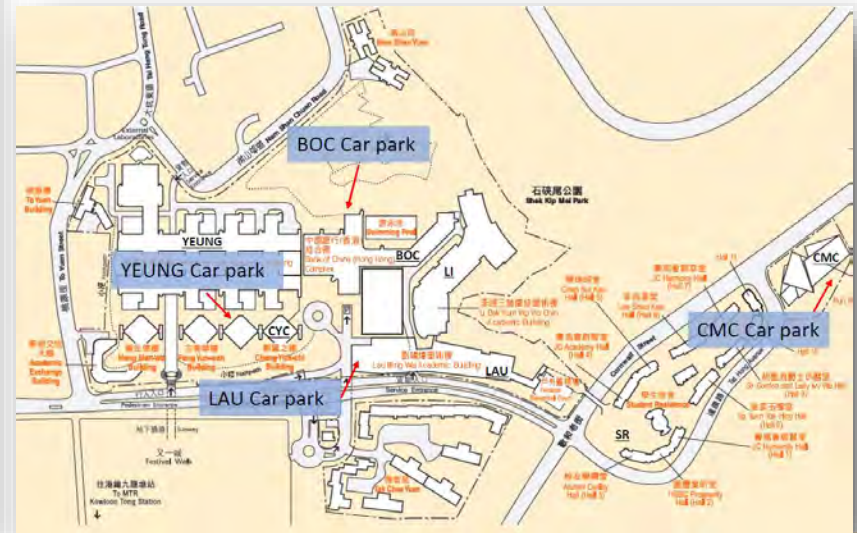
Sustainable Activities and Collaborations

By installation of different controller and sensor to remote control the air conditioning, power and gathering the data for energy saving analysis



Remote monitoring and control by IoT concept, to be SMART

EV charging stations on campus



4. Energy Management

Greenhouse Gas Emissions and Removals

According to the Guidelines to Account for and Report on Greenhouse Gas Emissions and Removals for Buildings in Hong Kong (2010 Edition) that jointly published by EPD and the Electrical and Mechanical Services Department (EMSD) of the HKSAR Government, CityU conducted a carbon audit and reported the results on yearly basis.

According to the Guidelines, the reporting boundary is classified into Scope 1, Scope 2 and Scope 3, while Scope 1 and Scope 2 emissions are mandatory, Scope 3 emissions are optional.

- Scope 1 – direct emissions and removals;
- Scope 2 – energy indirect emissions; and
- Scope 3 – other indirect emissions.

The physical boundary of this report included YEUNG, BOC, LI, LAU, CMC, CYC, Administration Building, FYW, MMW and TYB. The common areas of AEB especially the newly operated restaurant (owned by CityU and operated by outsourced caterer) are also included in this reporting period. However, the catering outlets located at LI, LAU and CMC are not included. The total GHG emissions in 2022-2023 were 26,920 tones of CO₂-equivalent. There was a 9.90% increase in carbon emissions while compared with 2021-2022. The increase in GHG emission was due to the campus has resumed normal in the reporting period. However, compared with CityU's baseline GHG gas emission in 2018-2019, it was decreased. The details were shown in the table and in the figure on the following two pages.

Guidelines to Account for and Report on Greenhouse Gas Emissions and Removals for Buildings (Commercial, Residential or Institutional Purposes) in Hong Kong

2010 Edition



機電工程署
EMSD



環境保護署
Environmental Protection Department

Click [here](#) to read the Guidelines

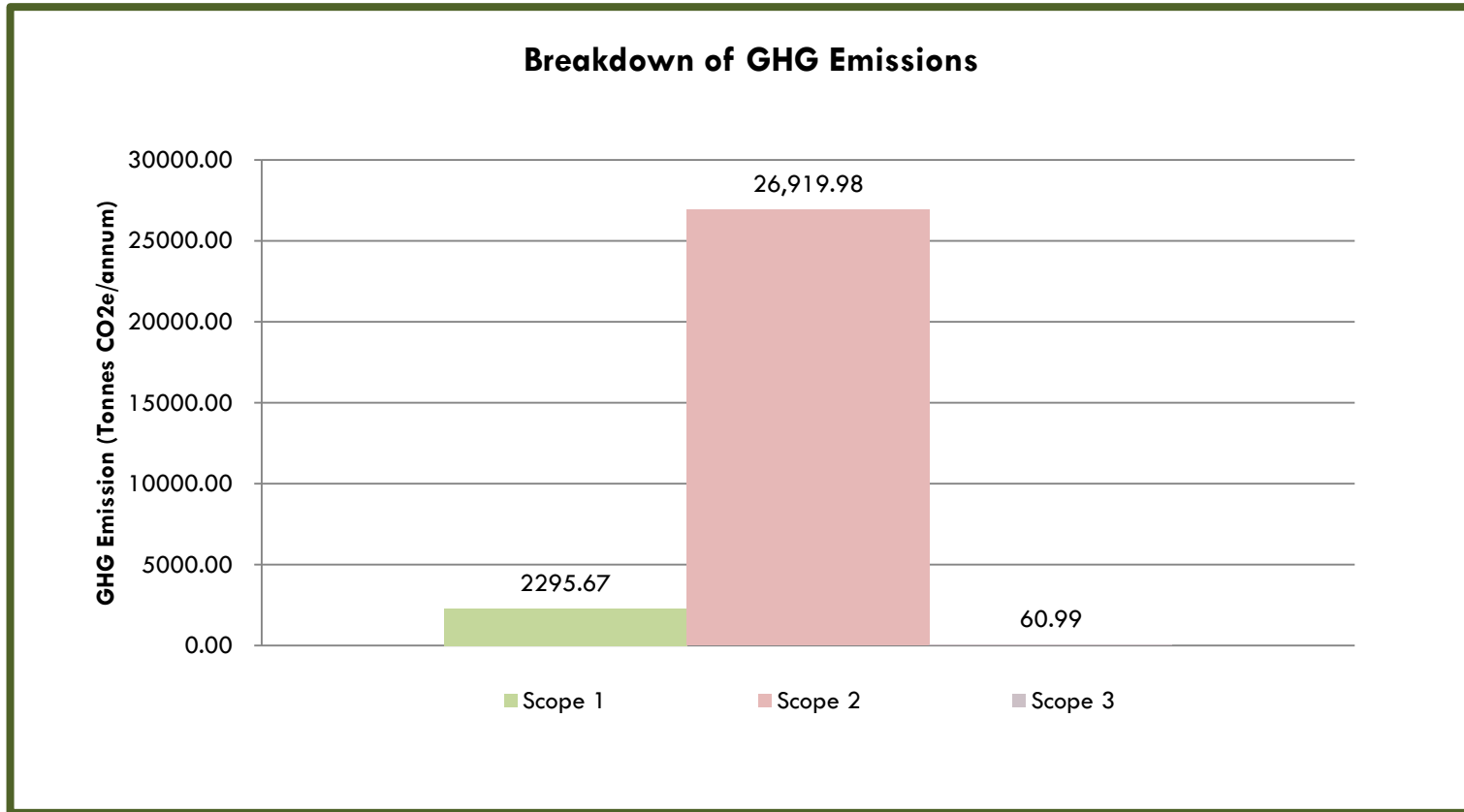
4. Energy Management

GHG Emissions and Removals - Results

Total Scope 1 GHG Emissions:	2379.87	Tonnes of CO ₂ -equivalent
Total Scope 1 GHG Removals:	84.20	Tonnes of CO ₂ -equivalent
Total Scope 2 GHG Emissions:	26,919.98	Tonnes of CO ₂ -equivalent
Total Scope 3 GHG Emissions:	60.99	Tonnes of CO ₂ -equivalent
Total GHG Emissions:	29,276.64	Tonnes of CO ₂ -equivalent
Total GHG Emissions of Previous Year:	26,640.99	Tonnes of CO ₂ -equivalent
% Change in GHG Emissions compared with Previous Year:	9.89%	
GHG Performance in Ratio Indicator:		
GHG Emissions per floor area:	0.11	In tonnes of CO ₂ -equivalent / m ²
GHG Emissions per floor area of Previous Year:	0.100	In tonnes of CO ₂ -equivalent / m ²
% Change in GHG Emissions per floor area compared with Previous Year:	10.81%	
GHG Emissions per person:	1.22	In tonnes of CO ₂ -equivalent / person
GHG Emissions per person of Previous Year:	1.16	In tonnes of CO ₂ -equivalent / person
% Change in GHG Emissions per person compared with Previous Year:	5.24%	

4. Energy Management

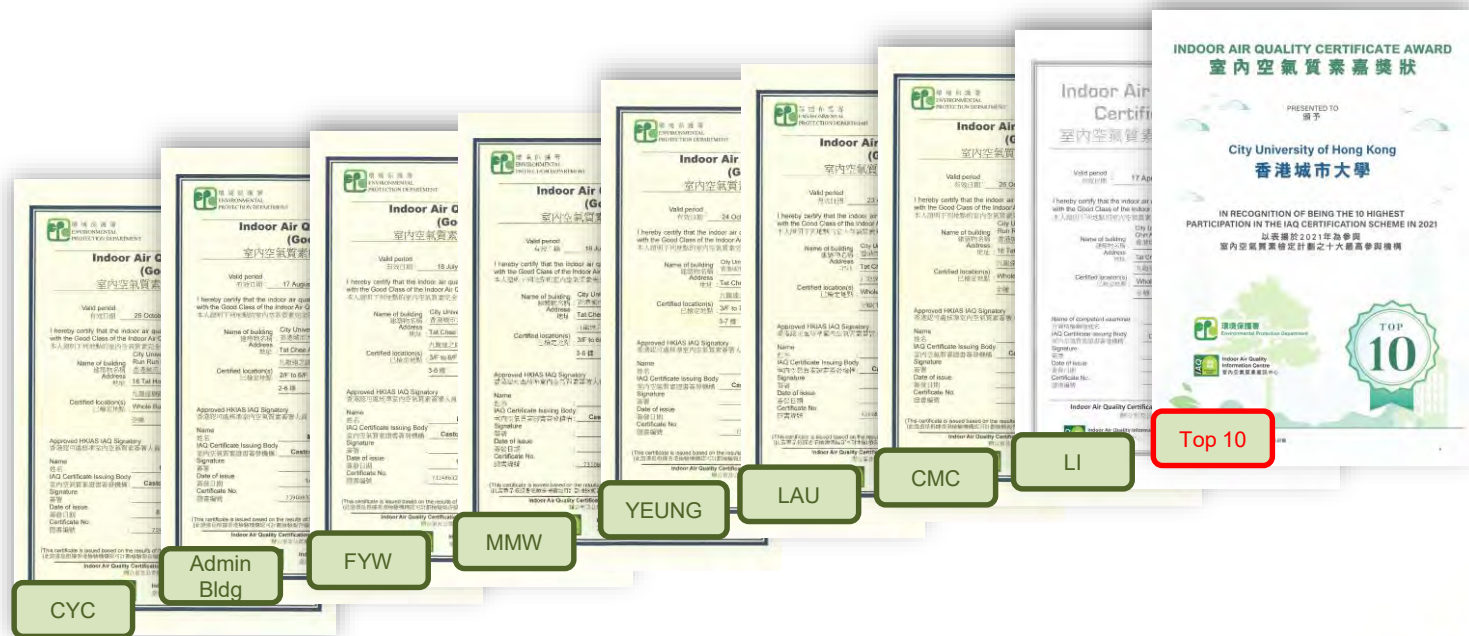
GHG Emissions and Removals



5. Air Quality Management

Indoor Air Quality (IAQ)

A total of eight buildings on campus obtained the “Good Class” IAQ certificate. Seven of the eight buildings have obtained the certificates four years in a row. The seven buildings are YEUNG, LAU, CYC, Administration Building, FYW, MMW and CMC. LI obtained the “Good Class” certificate under the new IAQ certification scheme and it was its second year obtaining the certificate. In addition, CityU received the Indoor Air Quality Certificate Award that issued by EPD in recognition of being the 10 highest participation in the IAQ certification scheme.



6. Campus Greening

Landscape Maintenance and Improvement

Gardeners have made great efforts to maintain a beautiful, pleasant and green environment for campus users through a wide range of landscape maintenance and improvement works.



6. Campus Greening

About 70 landscape improvement works have been done on campus and residential quarters, creating a green and pleasant environment for the enjoyment of campus users and residents.



6. Campus Greening

Enhancement of Greenery Effect

In addition to the existing landscape, vertical vegetation and potted plants on roof in Student Residence were selected for enhancing greenery.



6. Campus Greening

Compensatory Tree Planting

Upon removal of hazardous and dead trees, the loss of greenery were compensated by planting of trees or whips of native species for restoration of greening and ecological function.



The slope of Tak Chee Yuen



Hillside Trail



Roof Garden of LAU

6. Campus Greening

GROW

GROW, as the first organically certified university rooftop in Hong Kong, has long been contributing its harvest to NGOs in Hong Kong. The contribution highlights during the reporting period are as follows:



Donated a batch of harvest (about 40 kg) to “Food Angel (惜食堂)” in Aug 2022



Donated a batch of early water radish (about 19 kg) to “Pei Ho Counterparts” (北河同行) in Sham Shui Po in Nov 2022

6. Campus Greening

GROW

GROW, as the first organically certified university rooftop in Hong Kong, has long been contributing its harvest to NGOs in Hong Kong. The contribution highlights from July 2022 to June 2023 are as follows:



Donated a batch of white radish (about 25 kg) to “Pei Ho Counterparts” (北河同行) in Sham Shui Po in Jan 2023.

6. Campus Greening

GROW

GROW, as the first organically certified university rooftop in Hong Kong, has long been contributing its harvest to NGOs in Hong Kong. The contribution highlights from July 2022 to June 2023 are as follows:



Donated a batch of cabbage (over 50 kg) to “Pei Ho Counterparts” (北河同行) in Sham Shui Po in Feb 2023.



Donated a batch of lettuce (about 50 kg) to “Pei Ho Counterparts” (北河同行) in Sham Shui Po in Mar 2023.

6. Campus Greening

GROW



Participants of the activity helped with the harvesting and delivery of vegetables.



香港城市大學（城大）評議會繼2022年4至9月成功舉辦「城大種樂樂」有機種植活動後，現將舉辦新一期冬日篇活動，誠邀有意學習的校友一同參與。

城大堅信持續發展的理念，努力加強環保工作，致力為本地、全球人類，以及未來世代謀福祉。而校園內李達三葉耀珍學術樓（下稱LI）設有天台農場，讓城大成員可參與種植活動並增強對環保的概念。

故此，城大評議會希望透過舉辦是次活動，為校友提供相聚平台，並促進校友身心健康。同時讓參加者學習有機種植的知識，從而瞭解香港農業的發展。而收成成品更會用作捐助有需要人士，回饋社區，誠富意義。



活動一 冬日篇

12:00)

樓 (LI) 天台農場及課室

所有進入城大校園人士，除持有效狀況不允許接種新冠疫苗外，均須最少已接種了三劑疫苗或在過往半年內曾接種疫苗。

GROW had previously co-organized an event called 「城大種樂樂」- 冬日篇 with The Convocation of CityU

導師資料	城大評議會副主席及園藝治療師 — 何啟邦先生 城大園藝組核心成員 — 翁文傑先生 及 陳慧齡女士
活動內容	- 種植理論分享（從開田、照顧至收割）及耕種實習 - 參觀活動 - 聯絡社福機構或相關單位，捐贈農作物予有需要人士 - 通過種植活動，從不同方面了解生命價值
人數	20人 (只限城大校友參加，名額有限，先到先得) 備註：曾參加上期「城大種樂樂」活動的校友將會收到個別通知，不須再次報名。
語言	廣東話

6. Campus Greening

Use of Eco-friendly Fertilizers

To maintain quality of plants, organic fertilizers were selected and widely applied in landscape areas to minimize adverse impact on the environment.



7. Sustainability in Residential Estates

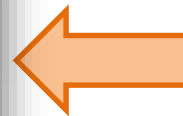
Food Waste Reduction and Recycling



Mini food decomposer used in staff quarters for converting food waste into fertilizers



Mini food decomposer is used at residential quarters to recycle food waste into fertilizers to help conserve limited landfills. Approx. 279 kg of food waste was converted into about 42 kg of fertilizers which were applied in landscape areas on Campus.



Application of composted food waste as fertilizers in landscape areas

7. Sustainability in Residential Estates (Student Residence)

Re-start Clothes Donation with The Salvation Army

Clothes donation has been suspended during COVID-19 outbreak, Student Residence re-started the donation with The Salvation Army in February 2023. Please see the following data:

Month	Clothes	Other Items
Feb 2023	66kg	34kg
Mar 2023	34kg	14kg
Apr 2023	58kg	37kg
May 2023	106kg	11kg
Total	264	96



Jockey Club Sustainable Campus Consumer Programme

This programme is one of the Jockey Club Sustainable Campus Consumer Programme under HKSCC for sustainable consumption in eight UGC funded Universities. Smart electricity meter and shower head will be installed in selected halls, with the use of Apps, the usage will be shown to residents. In the first phase, smart shower head has been installed.



7. Sustainability in Residential Estates (Student Residence)

Recycling Facilities and related promotion

Recycling bins are placed on each floor of the Student Residence



Posters to promote recycling is posted on the eye-attracting notice board and remarks for saving energy is posted next to the switches

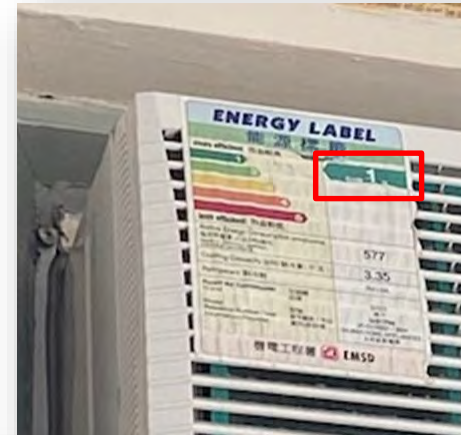
7. Sustainability in Residential Estates (Student Residence)

Energy saving initiatives

Motion sensing lighting is installed in some low pedestrian traffic area in student residence to conserve energy by only turning on the lights when someone is present.



Air conditioners with Grade 1 energy label under Mandatory Energy Efficiency Labelling Scheme (MEELS) were installed.



Abatement Solar-powered



7. Sustainability in Residential Estates (Student Residence)

Other sustainable initiatives

Unwanted refrigerators are stored in the common room and pending for reuse by new comers.



7. Sustainability in Residential Estates (Student Residence)

Other sustainable initiatives



Greening and Hong Kong natural scene wall paintings

8. Activities and Collaborations

Green Living @ CityU 2022

“Green Living @ CityU 2022” was organised and carried out starting from mid to late 2022, which aimed to foster sustainability awareness of staff and students in CityU and to promote low carbon lifestyles.

The theme of the event was “WasteSmart Money\$mart”. It was organised by the Sustainability Committee and Facilities Management Office and supported by GROW and NGOs. A total of 15 activities under 8 areas were held and aroused the awareness of the CityU community. The activities included:

- Kick-off Ceremony
- WasteSmart Money\$mart Pledge
- Campaign (Ben Don Go)
- Workshops (Mosquito Repellent Bags, Coffee Ground Body Scrub)
- Activities (Books Give and Take, Mooncakes collection & donation, Collection of metal container of mooncakes, Recycle Day)
- Talks (MSW Charging and Declutter, Green Consumption Sharing)
- Exhibition (Sustainability Activities)
- Visits (O-Park 1, Y-Park)



8. Activities and Collaborations

Green Living @ CityU 2022

Kick-off Ceremony:

Mr Sunny Lee, Vice-President (Administration), Professor LI Wen Jung, the Chairman of Sustainability Committee, Ms Brenda Lai, Director of Facilities Management were the officiating guests of the Ceremony conducted on 20 September 2022. Big Waster was invited as the special guest of the Ceremony to alert CityU community the importance of reducing waste.



8. Activities and Collaborations

Green Living @ CityU 2022

WasteSmart Money\$mart Pledge:

- 52 departments have made their Pledge to implement 5Rs which are stipulated under CityU Environmental Policy in their departments. The 5Rs include Rethink, Reduce, Reuse, Restore and Recycle.
- More than 2,300 staff members and students participated in the Pledge in “buy and use what I need, not what I want” and “recycle the recyclables”.



8. Activities and Collaborations

Green Living @ CityU 2022

Ben don go!

- This campaign was jointly organised with Environmental Campaign Committee (ECC) and other local UGC funded universities. CityU was the first stop of the Campaign. 388 reusable containers were checked out during the campaign period.



8. Activities and Collaborations

Green Living @ CityU 2022

Exhibitions:

- Achievements in Sustainability
- Campus Greening
- Green events
- Event highlights
- Waste Management



8. Activities and Collaborations

Green Living @ CityU 2022

Books Give and Take:

Donate, reuse and recycle books

Mooncake collection & donation and Collection of mooncake metal containers:

Collect of individual packed mooncakes for the needy and collection of mooncake metal containers for recycling

GROW:

Recruit GROW members and give small pots with vegetables to participants



8. Activities and Collaborations

Green Living @ CityU 2022

Workshops:

- Mosquitoes Repellent Bags
- Coffee Ground Body Scrub



Green Living @ CityU 2022
WasteSmart Money\$mart
咖啡渣身體磨砂+ 驅蚊香囊

Coffee Ground Body Scrub **Mosquitoes Repellent Bag**

*Pictures for reference only

Date : 20 September 2022 (Tue)
Venue: Wong's International Terrace, BOC
Language: Cantonese

Workshop 1: Mosquitoes Repellent Bag
驅蚊香囊
Time: 12:30-13:30

Workshop 2: Coffee Ground Body Scrub
咖啡渣身體磨砂
Time: 14:00-15:00

 Enrolment

CityU Organisers: Sustainability Committee, Facilities Management Office
CityU Supporting Organiser: Green@ShamShuiPo, 綠在深水埗



8. Activities and Collaborations

Green Living @ CityU 2022

Talks:

- Green Consumption Sharing (online and physical)
- MSW Charging and Declutter (online and physical)

Green Living @ CityU 2022
WasteSmart Money\$mart

講座 Talk **斷捨離與**
都市固體廢物收費
MSW Charging and Declutter

孫少聰
Dumpy Co. Speaker

*圖片只供參考
Pictures for reference only

登記 Enrolment

日期 Date: 5/10/2022 (星期三 Wed)
地點 Venue: 1 楊建文學術樓4樓LT-18
LT-18, Floor 4 of YEUNG
2 網上 (Zoom)
Online via Zoom
時間 Time: 12:30 – 13:30
語言 Language: 廣東話 Cantonese
講者 Speaker: 綠在深水埗 GREEN@SHAM SHUI PO

Facilities Management Office
CityU 香港城市大學
Co-organiser:
GREEN@SHAM SHUI PO

Green Living @ CityU 2022
WasteSmart Money\$mart

講座 Talk **綠色消費**
分享
Green Consumption Sharing

甚麼是綠色消費?
What is Green Consumption?

常見陷阱
Common traps

消費習慣的反思
Reflections on consumption habits

日期 Date: 7/11/2022 (星期一 Mon)
地點 Venue: 1 李達三葉耀珍學術樓3樓3614室
LI-3614, Floor 3 of LI
2 網上 (Zoom)
Online via Zoom
時間 Time: 12:30 – 13:30
語言 Language: 廣東話 Cantonese
講者 Speaker: 綠在深水埗 GREEN@SHAM SHUI PO

登記 Enrolment

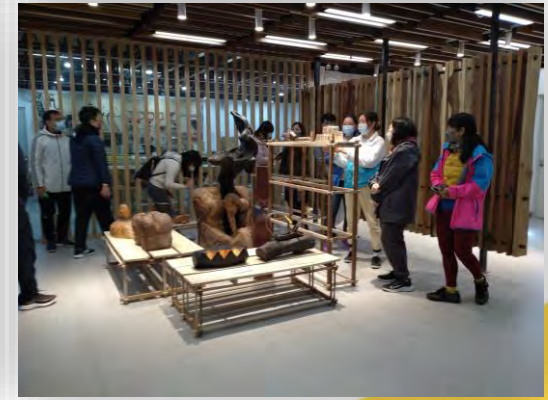
Facilities Management Office
CityU 香港城市大學
Co-organiser:
GREEN@SHAM SHUI PO

8. Activities and Collaborations

Green Living @ CityU 2022

Visits:

- O·Park 1
- Y·Park



8. Activities and Collaborations

CityU WasteSmart Money\$mart Campaign

The Waste Disposal (Charging for Municipal Solid Waste) (Amendment) Bill 2018 (MSW Charging Scheme) has been passed by the Legislative Council on 26 August 2021. A preparatory period has commenced to allow the Government, various stakeholders and members of the public to prepare for the implementation of the MSW Charging Scheme (the “Scheme”). The Scheme will affect all residents in Hong Kong. Undoubtedly CityU will face big challenges in paying extra costs for dumping waste.

To prepare for the implementation of the Scheme, FMO has organised year-round CityU WasteSmart Money\$mart Campaign with a series of programmes planned to promote and educate the CityU community on waste reduction, recycling and smart saving.



8. Activities and Collaborations

CityU WasteSmart Money\$mart Campaign

Under the CityU WasteSmart Money\$mart Campaign, a series of programmes have been organised in the second half of 2022.

Time	Activities organised in Jul-Dec 2022
6-8/2022	Review to reduce refuse bins and increase recycling bins at various locations.
6-8/2022	Housekeeping campaign – Dump Now and \$ave which makes economic sense to dump the waste on hand now rather than after the Scheme becomes effective and to recycle them as much as possible.
6-9/2022	Books Give and Take to engage the CityU community to share precious reading materials to nurture an academics, reading, sustainable and caring culture.
7 & 9/2022	Recycle Day to engage the CityU community to recycle unwanted recyclables as much as possible
7/2022	Umbrella Bags Reduction Accreditation Program 2022
8-9/2022	Mooncakes collection and donation to promote sustainability and show care for the needy
9/2022	Ben Don Go! – a free-meal-containers lending service “ben don go!” with the purpose to reduce plastic waste from using disposable meal containers and promote the concept of “Bring Your Own (BYO)” on campus.
9/2022	Metal Mooncake Boxes Recycling
9/2022-9/2023	Eye Treatment Products Recycling Program to promote and educate the CityU community on waste reduction and smart saving in response to the government’s municipal solid waste charging scheme which is soon to be enacted
10/2022	“MSW Charging and Declutter” talk to promote and educate the CityU community on waste reduction and smart saving in response to the MSW Charging Scheme.
11/2022	“Green Consumption Sharing” talk to share some common traps about green consumption and reflections on our consumption habits in the talk.

8. Activities and Collaborations

CityU WasteSmart Money\$mart Campaign

Lai See Reuse and Recycle Program

- With the aim to reducing wastage by reusing some of the materials so as to contribute to a greener Hong Kong, CityU continued to support the “Lai See Reuse and Recycle Program 2023” organised by Greeners Action to collect used Lai See packets from 9 locations located at YEUNG, LI, LAU, CMC, Student Residence, TCY, NSY and Academic Exchange Building during the period from 30 January 2023 to 27 February 2023. 50 kg of Lai See packets were collected for reuse.



8. Activities and Collaborations

CityU WasteSmart Money\$mart Campaign

Books Give and Take

For the 6th year CityU organised the “Books Give and Take 書香世代 - 延續生命、世代相傳” campaign. Two carts were placed at the Yellow Zone on U-Concourse, YEUNG. CityU community members and public were welcomed to leave or pick up books from the carts with no loan period. Overwhelming responses were received. In addition to the books taken away by interested people, surplus books that weighed 192 kg were donated to Sham Shui Po Green Community to continue their lives for the contribution to the local community.



8. Activities and Collaborations

CityU WasteSmart Money\$mart Campaign

Mooncakes collection and donation

CityU joined the “Eat Wise Charter” of the Green Mid-Autumn Festival Campaign organised by Food Grace (食德好) to collect mooncakes for the contribution to reduce food waste. A total of 18 surplus mooncakes were collected and sent to Food Grace for redistribution to the needy before the Mid-autumn Festival. The event was successfully held and received support from more than 200 estates, shopping malls, commercial buildings and companies. More than 8,000 pieces of mooncake were donated to the needy.



8. Activities and Collaborations

CityU WasteSmart Money\$mart Campaign

Recycle Day



Umbrella Bags Reduction Accreditation Program 2022



Housekeeping campaign – Dump Now and \$ave



8. Activities and Collaborations

CityU WasteSmart Money\$mart Campaign

Ben Don Go!



Metal Mooncake Boxes Recycling



Eye Treatment Products Recycling Program



8. Activities and Collaborations

Joint-U Campaign – Jockey Club Sustainable Campus Consumer Programme (JCSCCP)

Over the years, the eight publicly-funded universities of the Hong Kong Sustainable Campus Consortium (HKSCC) have been working together in making Hong Kong a more sustainable society. The Jockey Club Sustainable Campus Consumer Programme (JCSCCP) was developed as a collaborative endeavour by the eight member institutions of the HKSCC. This three-year programme promotes the United Nations' SDG#12, Responsible Consumption and Production, and aims to groom a new generation of more responsible and thoughtful consumers.

The programme consists of three core focus areas: (1) Responsible Choices, (2) Responsible Consumption, and (3) Responsible Consumer Activism. It aims to:

- Reduce the overall campus consumption of energy and water;
- Reduce one-time use disposable food and beverage containers; and
- Increase the awareness and understanding of eco-labelling.



8. Activities and Collaborations

Joint-U Campaign – Jockey Club Sustainable Campus Consumer Programme (JCSCCP)

Among the three focus areas of JCSCCP, a series of programmes have been organised and supported during the reporting period.



Ben don go! co-organised with ECC to promote the concept of BYO.

Student Leadership Programme and Sustainability Leadership Programme organised to recruit students. The recruited students were trained and were required to initiate and complete sustainability related projects.



Eco Fish Series with talk, Eco-tour and Fishpond to Table etc. Programmes organised to share local fish farming as it a source of sustainable food and let people know more about sustainable aquaculture

Short-form Video Competition



EcoBingo Challenge to allow people know more ecolabels



8. Activities and Collaborations

Joint-U Campaign – Jockey Club Sustainable Campus Consumer Programme (JCSCCP)



Posting of international dates on University's social media such as Facebook, Instagram etc.

Smart Showerheads as Eco-friendly Shower Hack programme for Student Residence.



#EatForThePlanet promotion and posting of “#EATFORTHEPLANET” menu with different level of carbon emissions at participated catering outlets for consumers information and reference.



REELsponsible Food Consumption Video Competition and Fairtrade Workshops



Clothing swap and pop up markets to collect unwanted clothes and share them among eight universities campuses. Besides waste reduction, these clothes could extend their usefulness to their new owners. The remaining clothes were donated to charity.

8. Activities and Collaborations

Energy Saving Charter

The University continued to sign up to the “Energy-Saving Charter 2022” (Charter) which was co-launched by the Environment Bureau (ENB) and EMSD. By signing the Charter, the University was committed to switch off electrical appliances and systems when not in use and procure energy efficient electrical appliances (such as those with Grade 1 energy labels, fridge with door) and systems from June 2022 to May 2023. FMO issued energy saving tips on switching off appliances and systems when not in use:

- Lights, air-conditioners should be switched off in areas that are unoccupied. With few people working in the office, switch off the non-essential lighting and use task lighting to directly illuminate work areas.
- Part of lift and escalator can be idled during non-peak hour.
- Use appliances with timer control or automatically switch-off control functions to avoid leaving appliances in standby mode for a long period.
- Unplug all equipment chargers and adapters when they are not in use. Please read leaflet on [Reducing Standby Power Consumption](#).
- Switching off the computer screen can save more energy instead of letting the "screen saver" run.
- When leaving office, arrange for the last-man-out to check and switch off the power source to all air-conditioner, lighting and office equipment that are not in use.



8. Activities and Collaborations

WWF Earth Hour 2023

CityU has always supported the WWF Earth Hour campaign held and so as this reporting period. On 25 March 2023, the University turned off non-essential lights in corridors, open / roof gardens, carparks and / or external public areas at YEUNG, Administration Buildings, BOC, LI, LAU and CMC for one hour from 8:30 pm to 9:30 pm.

Moreover, CityU Announcement Portal (CAP) was used to inform all staff and students to encourage them and their families to support this meaningful event by turning off lights in office and at home with the aim to arouse awareness on global warming, energy saving, and reducing emission of pollutants and greenhouse gases.

The theme for Earth Hour 2023 is “**Habits Protect Habitats**” which shines a spotlight on some silent heroes: wetland habitats.



Hong Kong No Air Con Night 2022

It was the 13th year that Green Sense organized Hong Kong No Air Con Night. All CityU staff and their families, and residential hall students were invited to participate in the event by switching off their air-conditioner when the outdoor temperature is lower than 27°C. The objective of the event is to raise awareness of energy saving with focus on promoting the green practice of reducing use of air-conditioning, as air-conditioning constitutes a large proportion in the total energy consumption in Hong Kong.

8. Activities and Collaborations

Smart Recycling System

In collaboration with Environmental Protection Department (EPD), two sets of smart recycling bins have been installed on Campus and at Student Residence respectively. Promotional sessions were conducted at both locations on 8 and 16 May 2023. Staff and students could earn GREEN\$ points when submitting recyclables and join the GREEN\$ membership via the GREEN\$ Mobile App.



Promotion at Student Residence



Promotion on campus

8. Activities and Collaborations

Smart Recycling System

To let the CityU Community get a glimpse of the Smart Recycling System, a Smart Recycling Promotion Vehicle (SRPV) toured around our university on 20 June 2023. The SRPV is a vehicle equipped with 4 units of smart recycling bins, a smart balance and a gift redemption unit.



9. Recognitions and Awards

Hong Kong Awards for Environmental Excellence – Public and Community Services Merit Award



Commendation Scheme on Source Separation of Commercial and Industrial Waste – Silver Award and Award for Promotion



Appreciation Certificate - ECF Source Separation and Collection of Food Waste for the Food and Beverage (F&B) Trade / EPD Pilot Scheme on Food Waste Collection



9. Recognitions and Awards

Hong Kong Green Organisation
Certification – Energywi\$e
Certificate- Excellent Level



Hong Kong Green Organisation
Certification – Wastewi\$e
Certificate- Excellent Level



Umbrella Bags Reduction
Accreditation Program 2022 –
Gold Level



9. Recognitions and Awards

Hong Kong Awards for Environmental Excellence (HKAEE) – Certificate of Merit and Recognised as Hong Kong Green Organisation



Hong Kong Green Day 2023

As supporting organisation of Hong Kong Green Day organised by Green Council.



10. Looking Ahead

The University is facing challenges in GHG reduction after resuming normal from the COVID-19 pandemic. Due to the overwhelming increase in the activities on campus, the water and energy consumption increased. With the commitment of reducing GHG emissions by 8% (compare with the baseline year) on campus in 2030, CityU will vigorously pursue energy reduction strategies by expanding renewable energy opportunities, and reduce campus-related GHG emissions, which commensurate with the Hong Kong government's announcement of a plan to become carbon neutral by 2050. The University will also continue the replacement of traditional fluorescent tube into LED type with dimmable or ON/OFF function in communal area and switch off the lighting in communal area during campus closing time from 23:00 – 07:00.

At the societal level, the University will actively support the Government's initiatives in waste reduction, particularly in municipal solid waste reduction. We will also continue to collaborate with green organisations to organise more activities to promote sustainability.

At the collegiate level, the University will continue to collaborate among our member universities to promote sustainable living. We will work closely with HKSCC working groups on sustainability performance, education and promotional campaigns. The coming years focus will be promote the United Nations Sustainable Development Goal #12: Responsible Consumption and Production.

At the campus level, the University will continue to adopt the 5R's concept in waste management especially in municipal solid waste reduction and enhance smart recycling on campus. In the coming year we look forward to continue working with departments, students, staff and faculty; peer institutions, and our surrounding community to collectively progress the University's commitment to social and environmental responsibility.

Appendix

Building abbreviation

AEB	Academic Exchange Building
BOC	Bank of China (Hong Kong) Complex
CMC	Run Run Shaw Creative Media Centre
CYC	Cheng Yick-chi Building
FYW	Fong Yun-wah Building
LAU	Lau Ming Wai Academic Building
LI	Li Dak Sum Yip Yio Chin Academic Building
MMW	Mong Wan-wai Building
TYB	To Yuen Building
YEUNG	Yeung Kin Man Academic Building



香港城市大學
City University of Hong Kong

End of Report

專業 創新 胸懷全球
Professional · Creative
For The World

Facilities Management Office
<http://www.cityu.edu.hk/fmo/>

