

## Table of Contents

1. Requirements.....	2
2. Common Setting .....	2
a. Internet Explorer Configuration.....	2
i. Add Trusted Site.....	2
ii. Trusted sites setting (and enable ActiveX and Allow Programatic clipboard access) .....	4
iii. TLS Setting.....	8

## 1. Requirements

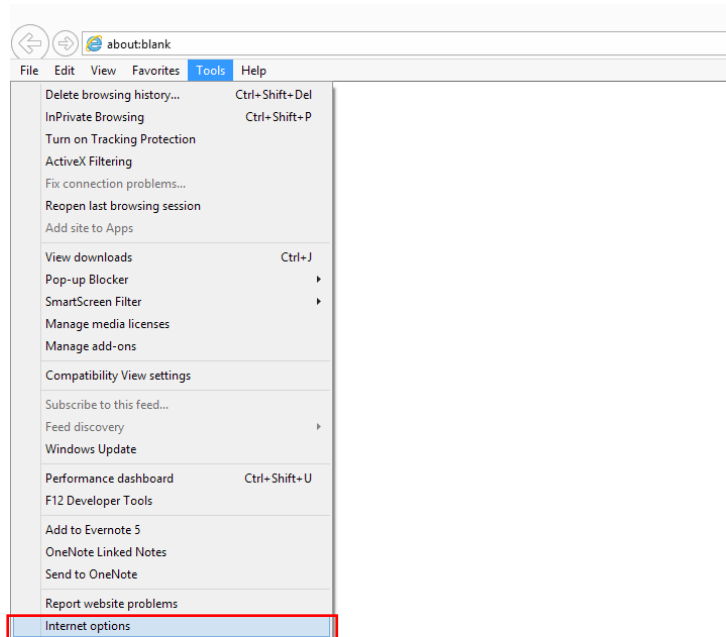
Internet Explorer 11 or above

## 2. Common Setting

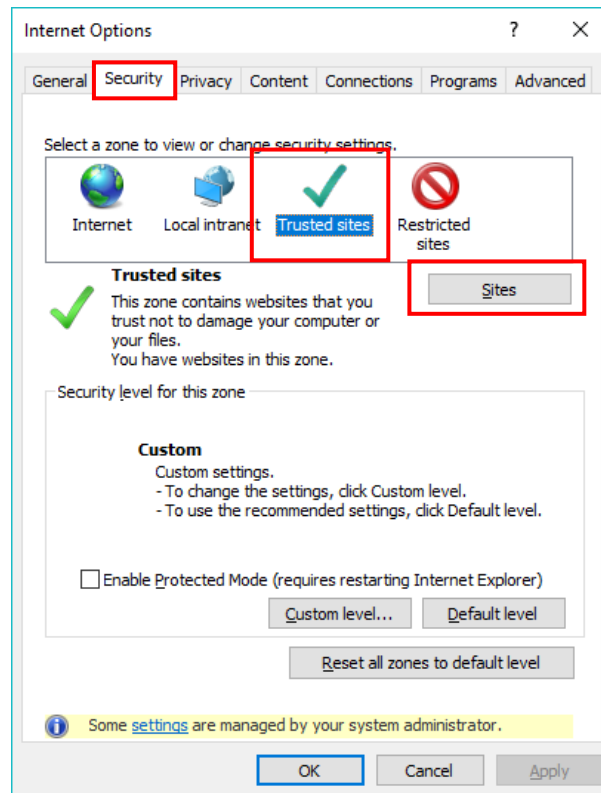
### a. Internet Explorer Configuration

#### i. Add Trusted Site

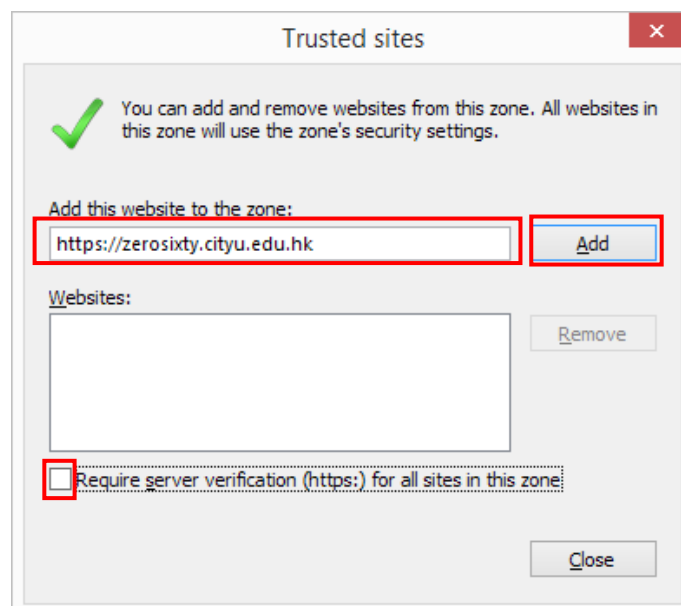
- In Menu Bar of Internet Explorer, select 'Tools' → 'Internet Options' (If menu bar is no show, press the Alt key)

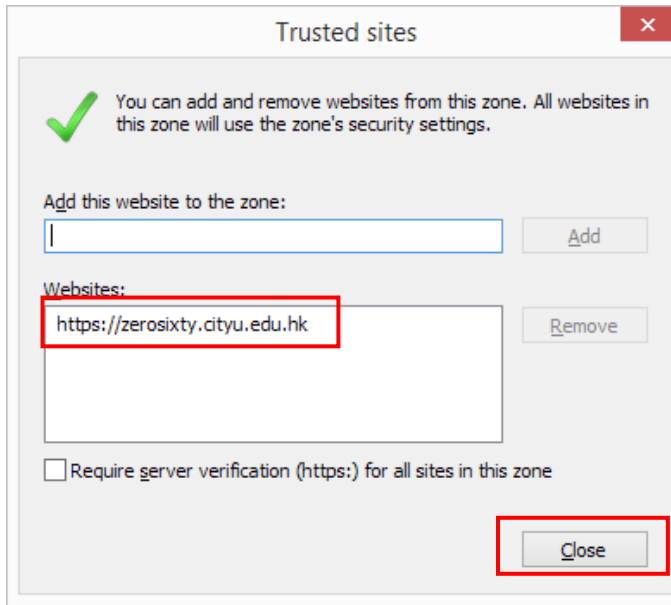


- Select 'Security' tab → Select 'Trusted sites' icon. → Click 'Sites' button.



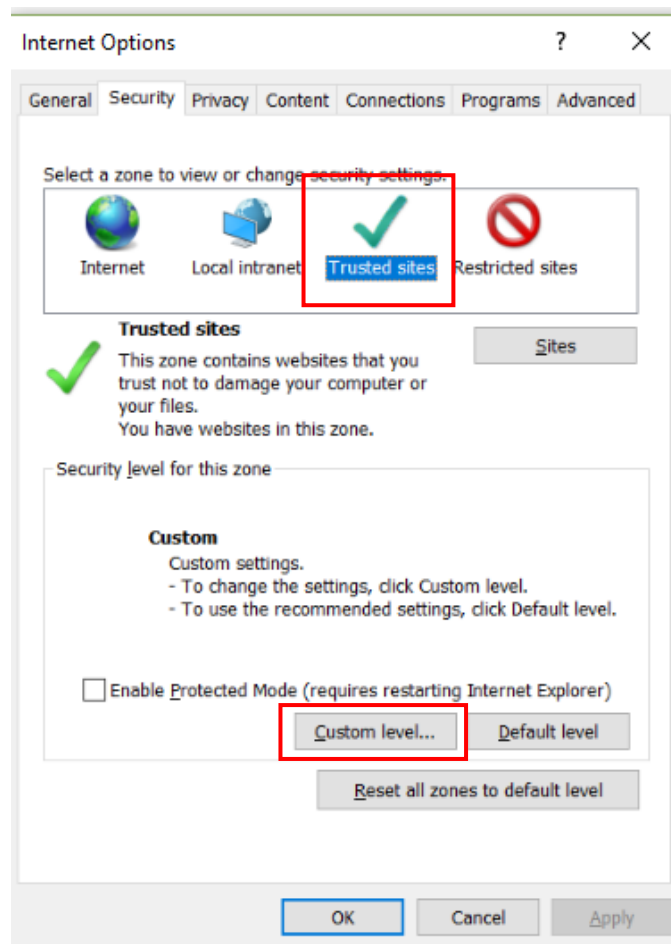
- Input the following web site addresses to 'Add this website to the zone' box:  
<https://zerosixty.cityu.edu.hk/>
- **Uncheck** the "Require server verification (https:) for all sites in this zone" checkbox if necessary.
- Click 'Add' button and verify the web site address is added successfully.



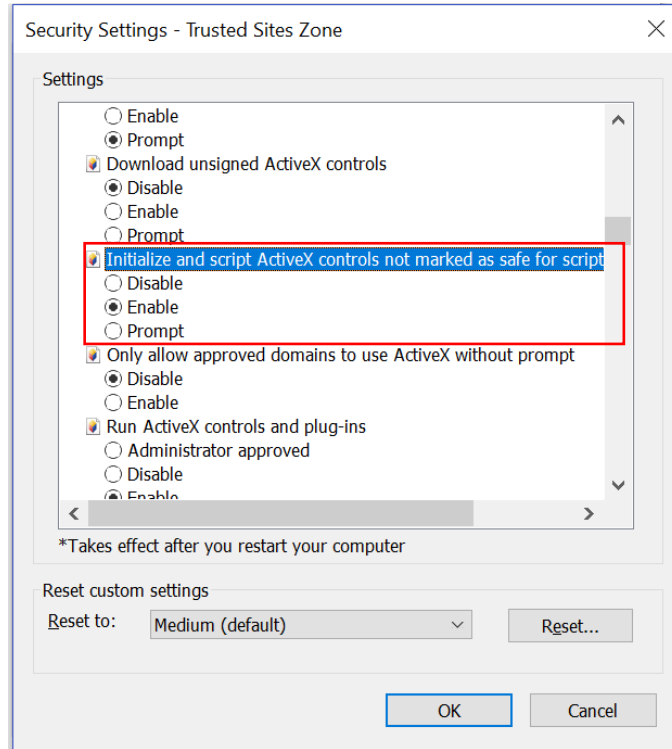


ii. Trusted sites setting

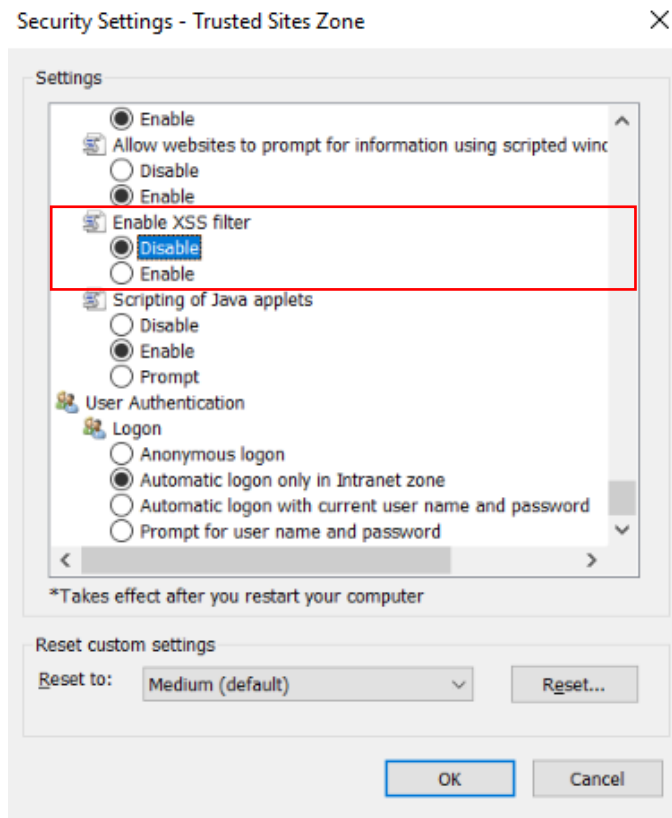
- Select 'Trusted Sites' → Click 'Custom level' button.



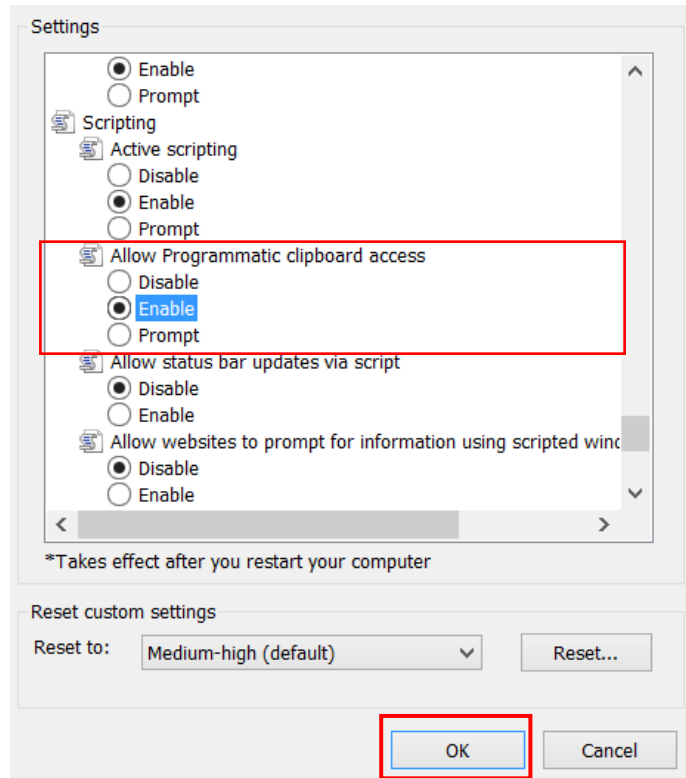
- Enable “Initialize and script ActiveX controls not marked as safe for scripting”



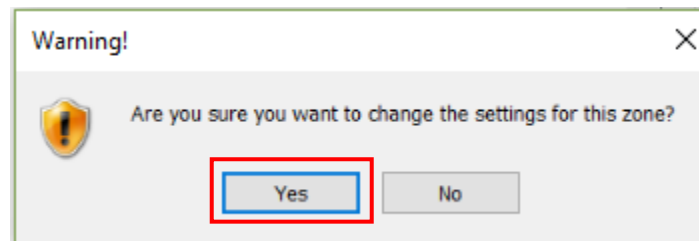
- Locate the 'Enable XSS filter' option → Select 'Disable' button



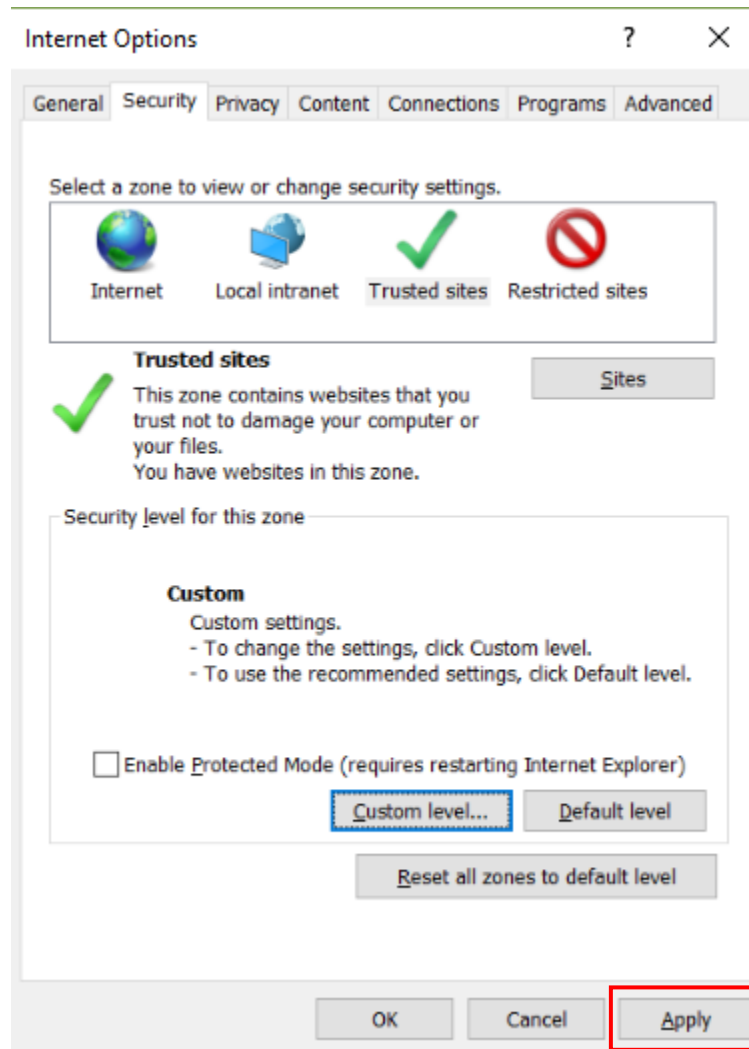
- Enable “Allow Programmatic Clipboard Access” → Click ‘OK’



- Click ‘Yes’ button



- Click 'Apply' button



### iii. TLS Setting

- From 'Internet Options' → Select 'Advanced' tab → Locate 'Use TLS 1.2' under 'Settings'.
- Ensure that the checkbox of 'Use TLS 1.2' is checked. Click 'OK' button.

