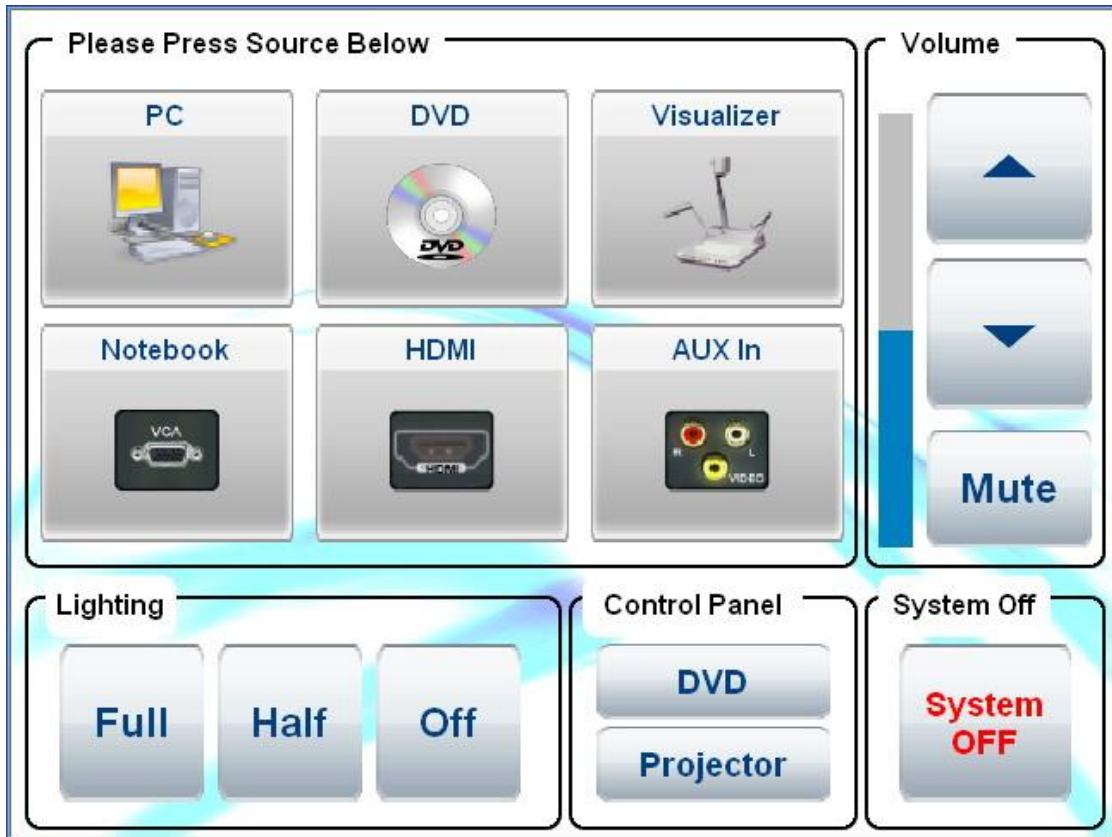


User's Guide for Using AV
Equipment at
80-seater classrooms
(Y4302, B4302, G4302, P4302)

CONTENTS

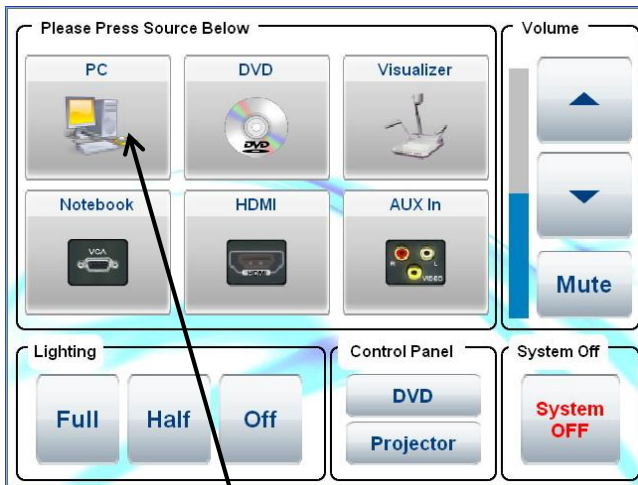
| | |
|--|----------|
| Introduction of AV Control Panel | P. 3 |
| Way to display the Network Computer image | P. 4 |
| Way to display the Notebook Computer image with VGA connector..... | P. 5 |
| Way to display the Notebook Computer image with HDMI or Display port connector..... | P. 6 |
| Way to display the Visualizer image | P. 7-9 |
| Way to playback DVD, VCD, CD by using the DVD Player | P. 10-12 |
| Way to use External AV Equipment | P. 13 |
| Way to set the room lighting | P. 14 |
| Way to control the projectors directly | P. 15 |

AV CONTROL PANEL

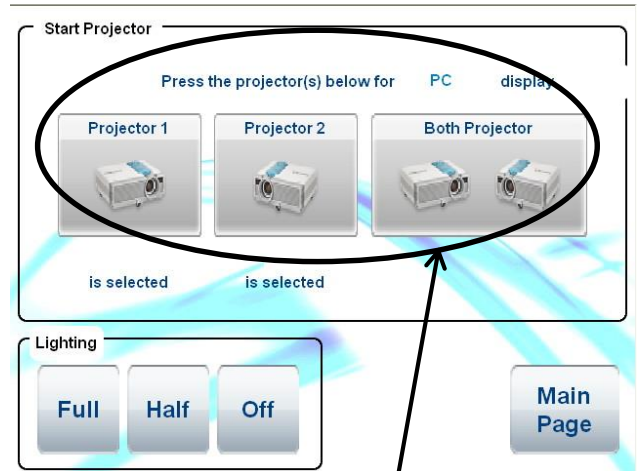


- PC To use the network computer installed at the Teacher's Desk.
- Notebook To use a notebook Computer.
(User must connect the VGA cable or HDMI cable provided at the Teacher's Desk to Notebook Computer first.)
- DVD To use DVD Disc Player installed at the AV Cabinet, for playing DVD,VCD or CD.
- HDMI To use user's notebook computer or AV equipment with HDMI socket.
- Visualizer To use the Visualizer (document camera) on the teacher's Desk.
- Aux In To use user's portable AV equipment.
- Lighting To select one of three pre-set light settings.
- Volume To increase, decrease or mute the sound level except the Microphone volume.
- Projection Control To Control projectors directly. (e.g. power on/off, video mute, screen up/down, etc.)
- System OFF** To switch off the power of the AV system.
(Please remember to press this button before leaving the Lecture Theatre.)

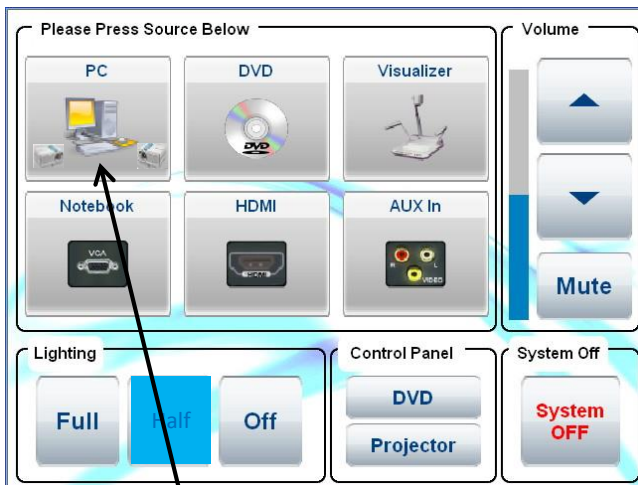
Way to display the Network Computer image



1

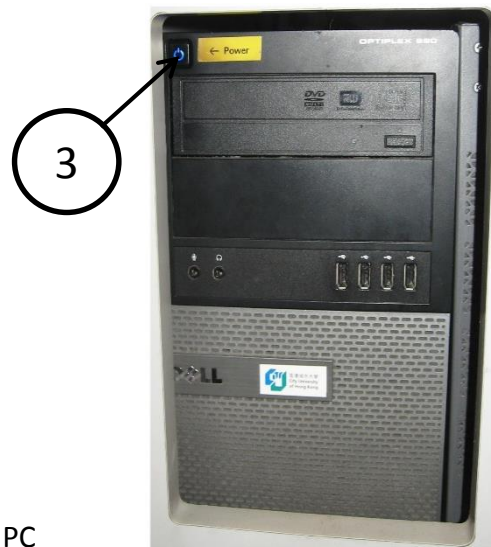


2



4

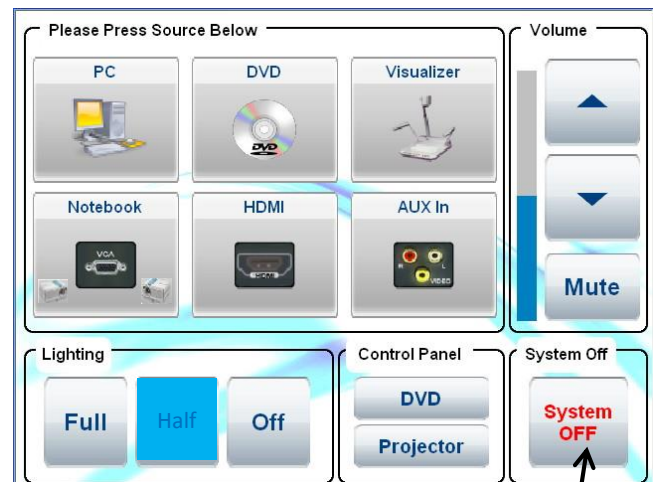
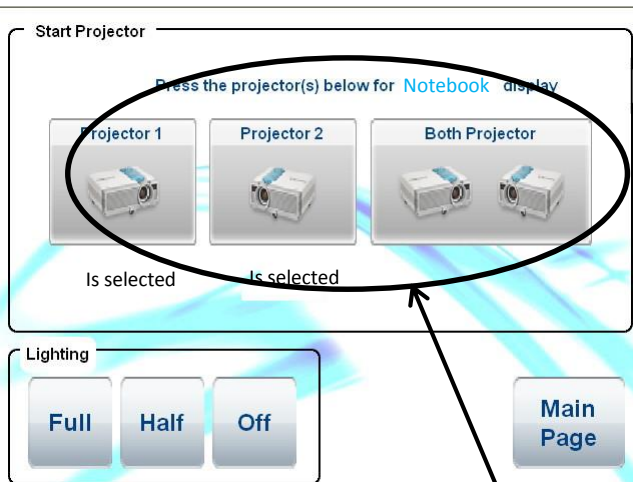
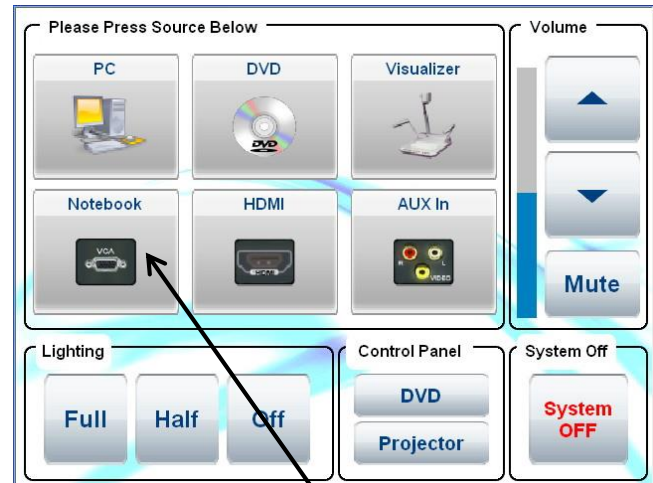
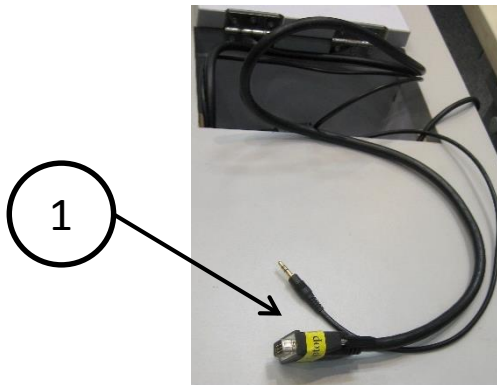
Two small projector icons showing PC source is selected



3

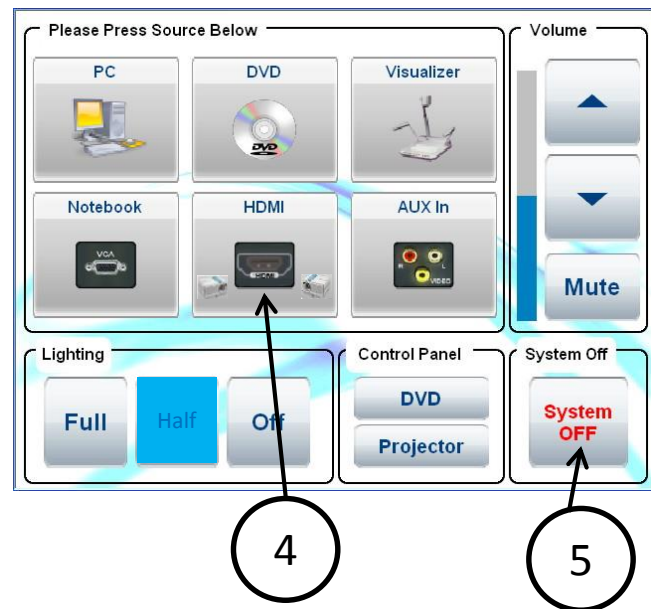
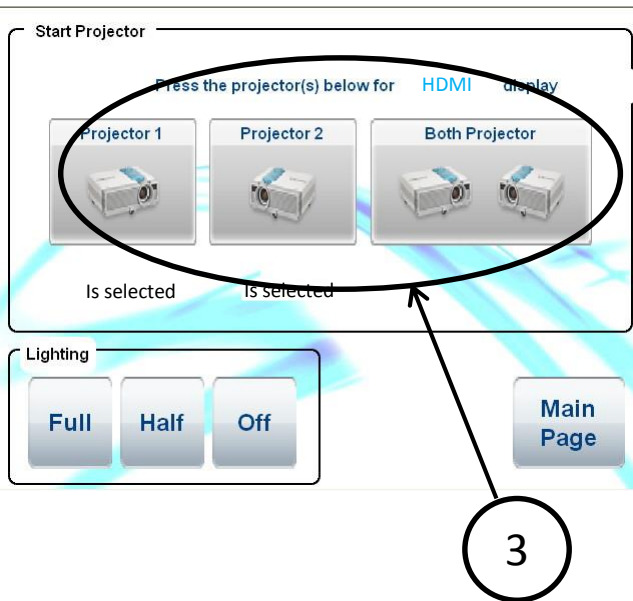
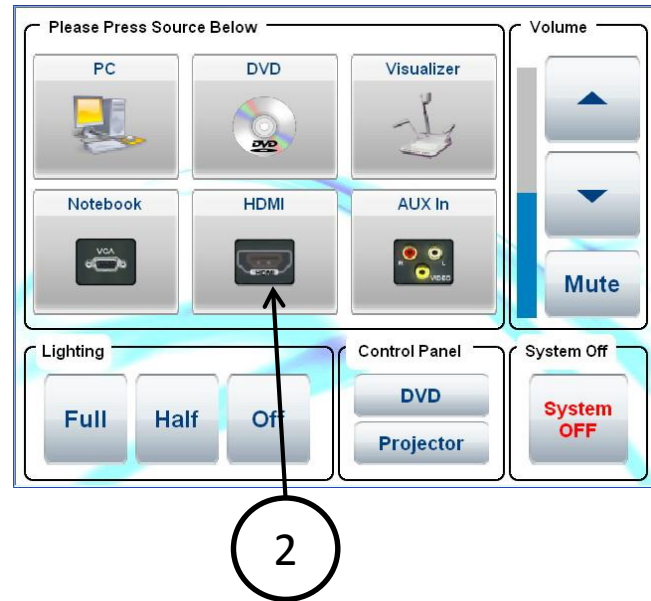
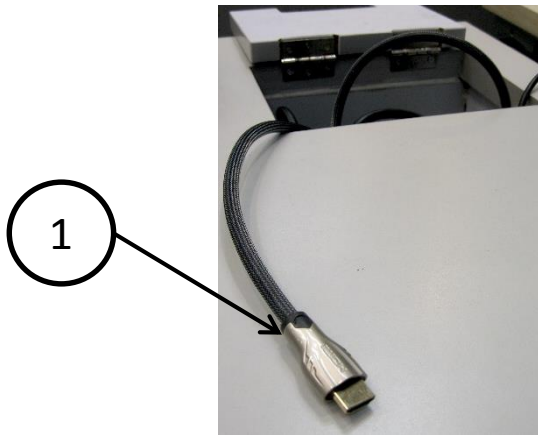
1. Press the icon "PC".
2. Press the projector(s) for "PC" display
3. Turn on the Network Computer.
4. Wait for around 40 seconds for projector warm-up.
5. After use, press the "System Off" icon to turn off the projector.

Way to display the Notebook Computer image with VGA connector



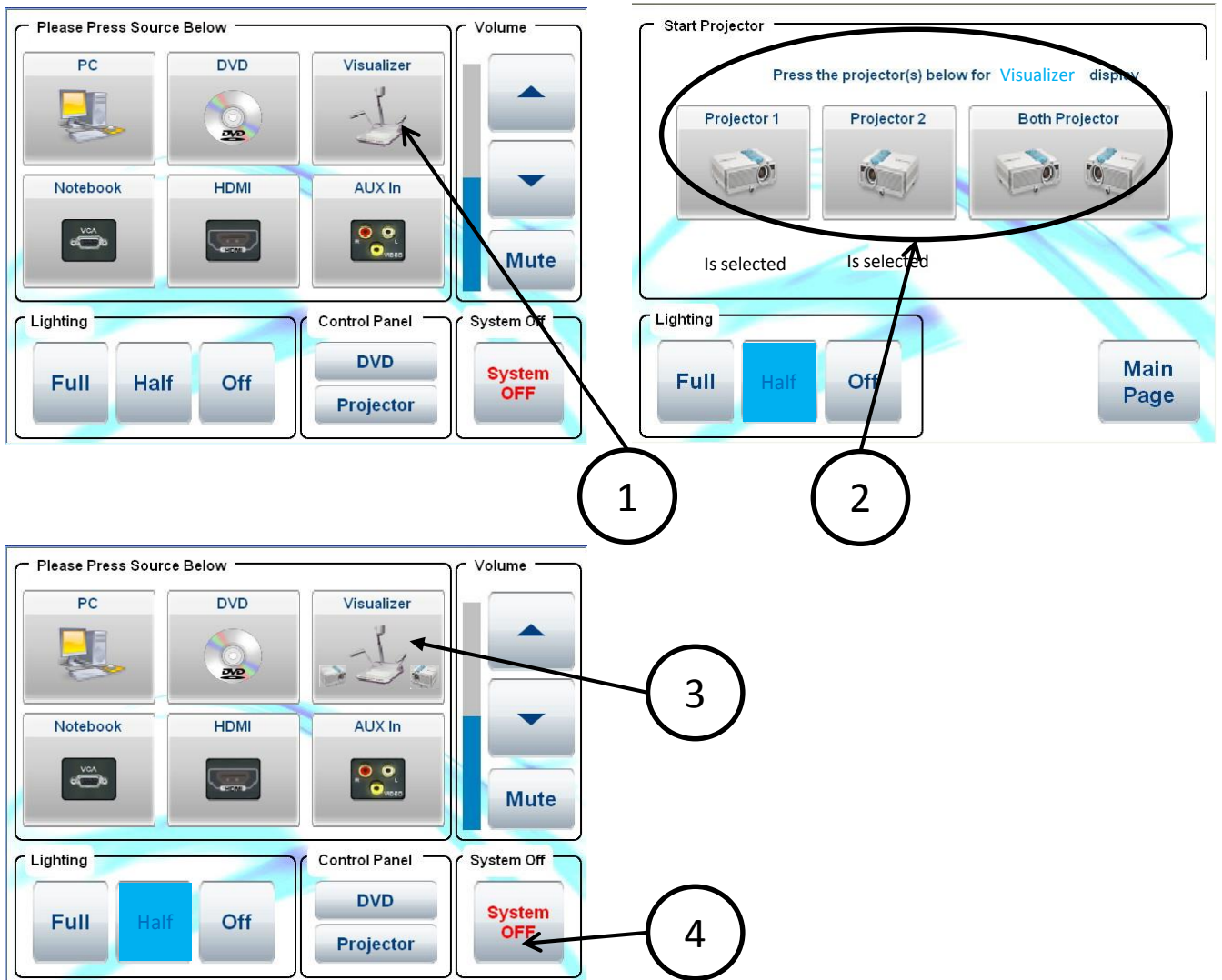
1. Connect the VGA and audio cable to your Notebook Computer .
2. Press the icon “Notebook”.
3. Press the projector(s) for “Notebook” display.
4. Wait for around 40 seconds for the projector to warm-up.
5. After use, press “**System Off**” icon to turn off the projector.

Way to display the Notebook Computer image with HDMI or Display port output

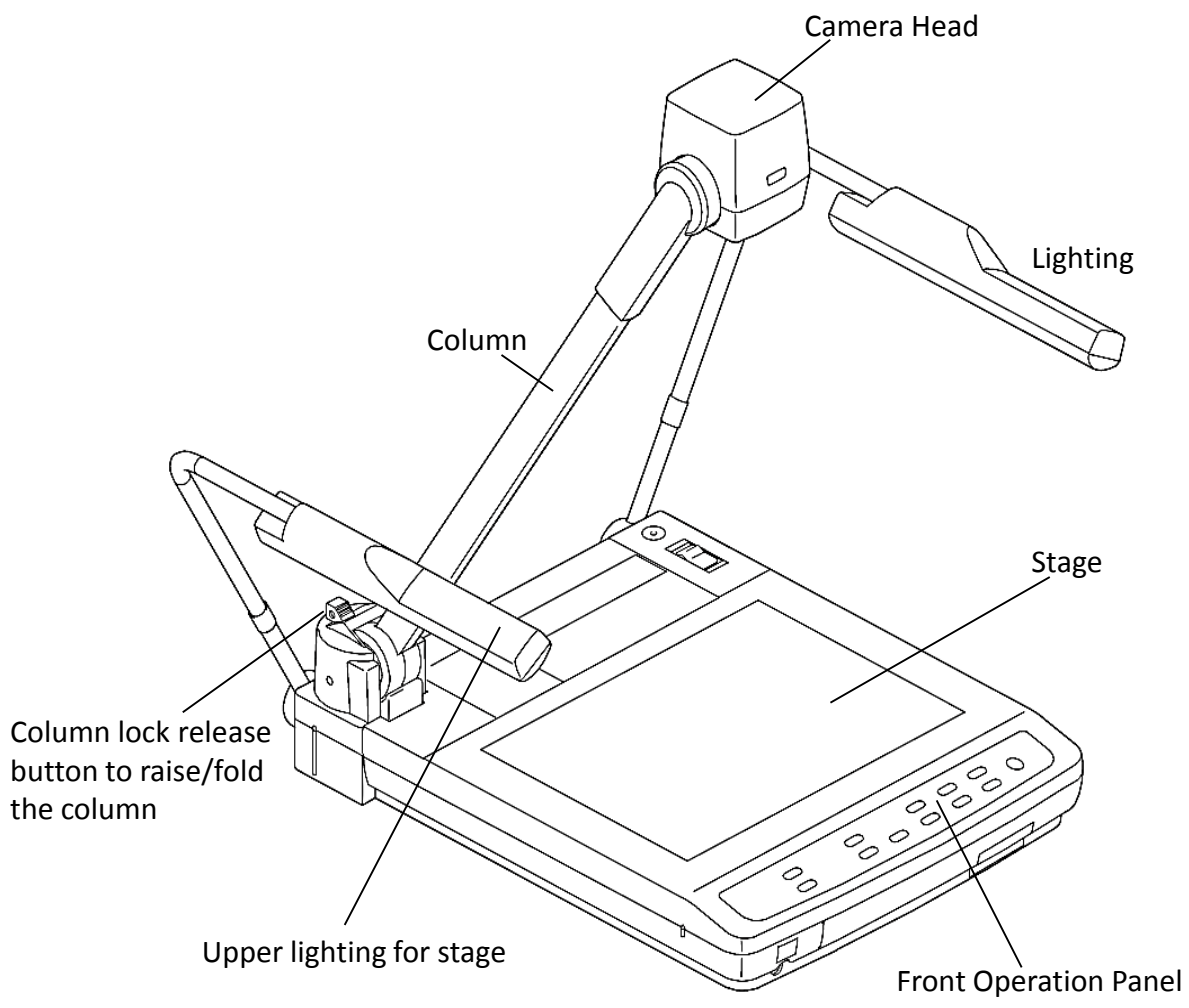


1. Connect the HDMI cable to your Notebook Computer; if your Notebook computer has Display Port socket, you must bring your adaptor cable of Display Port to HDMI socket .
2. Press the icon “HDMI”.
3. Press the projector(s) for “Notebook” display.
4. Wait for around 40 seconds for the projector to warm-up.
5. After use, press “**System Off**” icon to turn off the projector.

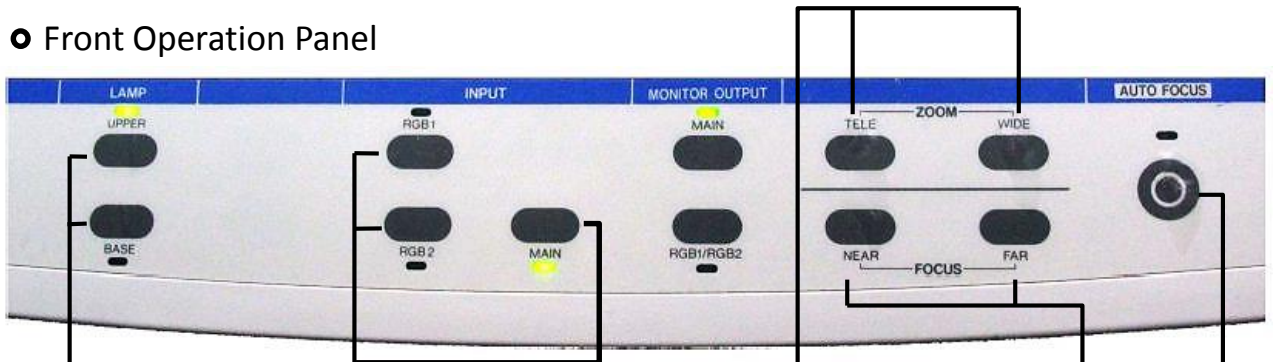
Way to display the Visualizer image



1. Press the icon **“Visualizer”**.
2. Press the projector(s) for **“Visualizer”** display.
3. Wait for 40 seconds for the projector to warm-up.
 - The Visualizer will turn-on automatically. Please select the appropriate lighting mode of the Visualizer (over the Stage, beneath the Stage, or light-off).
 - * Please refer to P8 and P9 for more details. *
 - Place the object/ document/ transparency onto the Stage, adjust the viewing area using the **Zoom** buttons [IN] & [OUT] , and press the **Auto Focus** button [AUTO] for focusing.
4. After use, press the **“System Off”** icon to turn off the projector.



● Front Operation Panel



15. Lighting Buttons

16. Input Selection Buttons

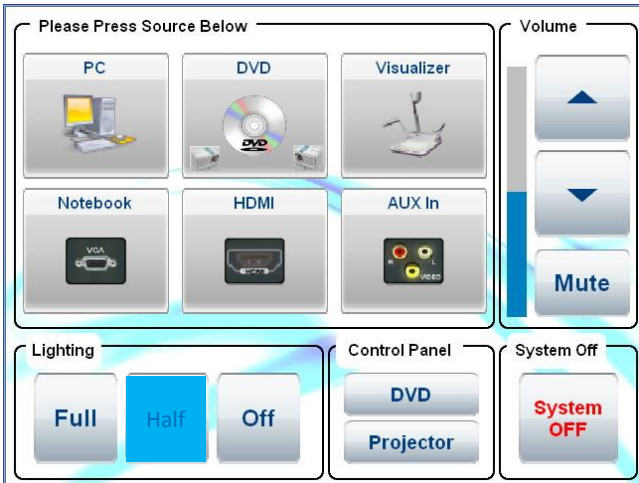
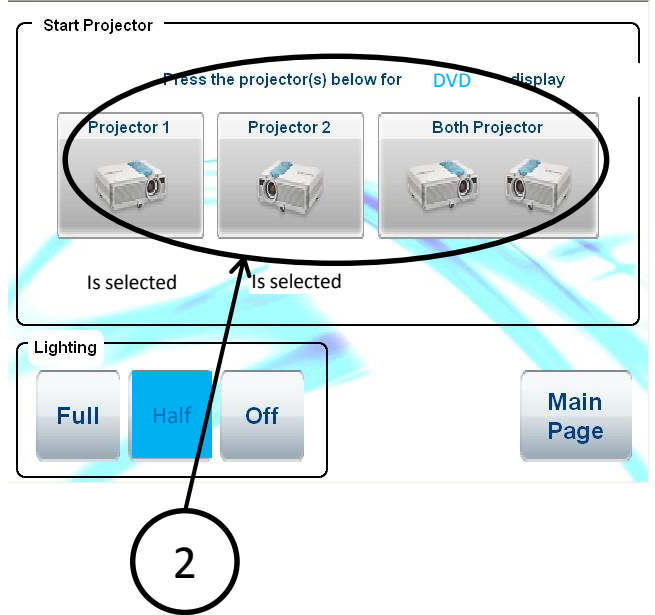
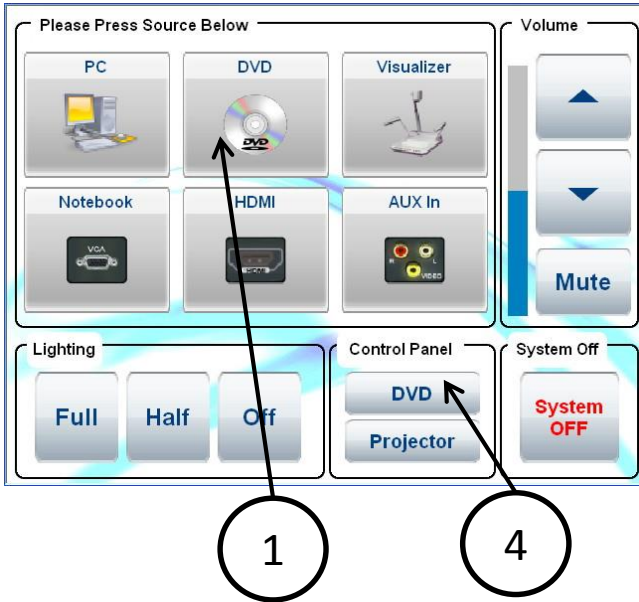
17. Zoom Buttons

18. Focus Buttons

19. Auto Focus Buttons

| | Part Name | Function |
|----|-------------------------|---|
| 15 | Lighting Buttons | To turn ON/OFF the lighting unit (upper/base/off) Base lighting is used for transparency |
| 16 | Input Selection Buttons | To change the input line. Main is the camera head, RGB1, RGB2 are external VGA signals |
| 17 | Zoom Buttons | To change the image size |
| 18 | Focus Buttons | To adjust focus manually (powered) |
| 19 | Auto Focus Button | To adjust focus automatically after press this button once. |

Way to playback DVD, VCD or CD by using the DVD Player



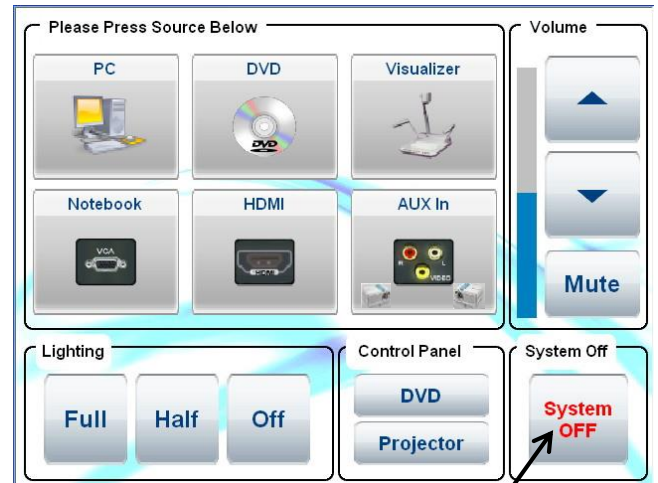
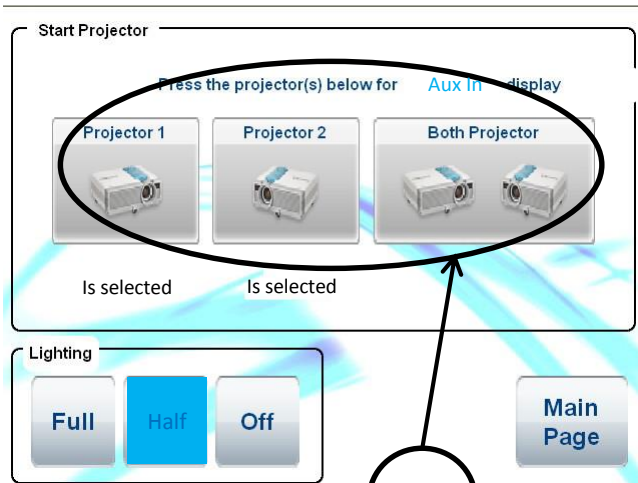
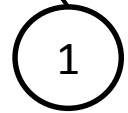
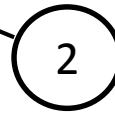
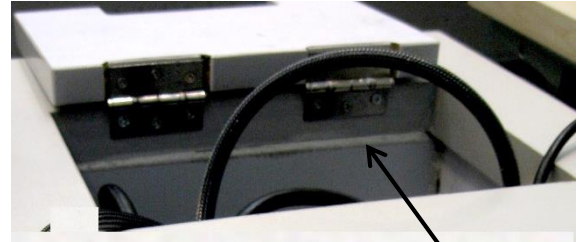
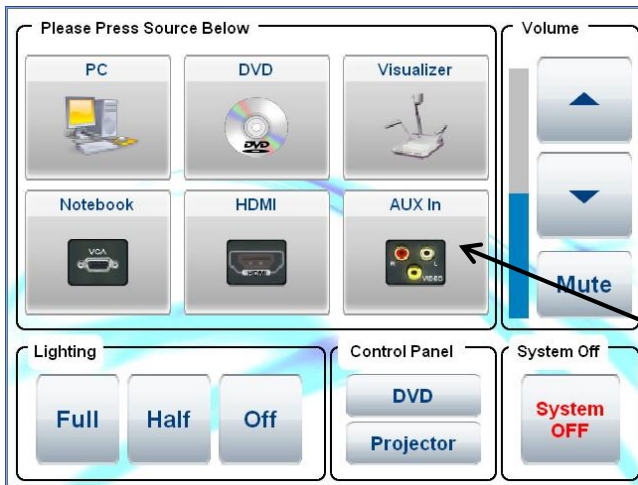
1. Press the icon "**DVD**".
2. Press the projector(s) for "**DVD**" display
3. Wait for around 40 seconds for projector warm-up.
4. Press "**DVD Control**" to control the DVD Player.
5. Press the "**POWER**" button on the DVD Player's front panel to turn it ON.
6. Open the Disc Tray and place the disc on the disc tray.
7. Press the "**PLAY**" button to start playback.
8. After use, press the "**STOP**" button, the playing Disc will stop.
9. Press the "**System Off**" icon to turn off the Video Projector.

DVD Control

This interface features a 'DVD Control' section with buttons for: Previous, Next, Stop, Previous, Enter, Next, Play, Pause, Stop, Stop, Up, Audio, Subtitle, and Down. A 'Volume' section includes a vertical slider and buttons for Up, Down, and Mute. A 'Lighting' section has buttons for Full, Half, and Off. Additional buttons for More Control and Main Page are located to the right.

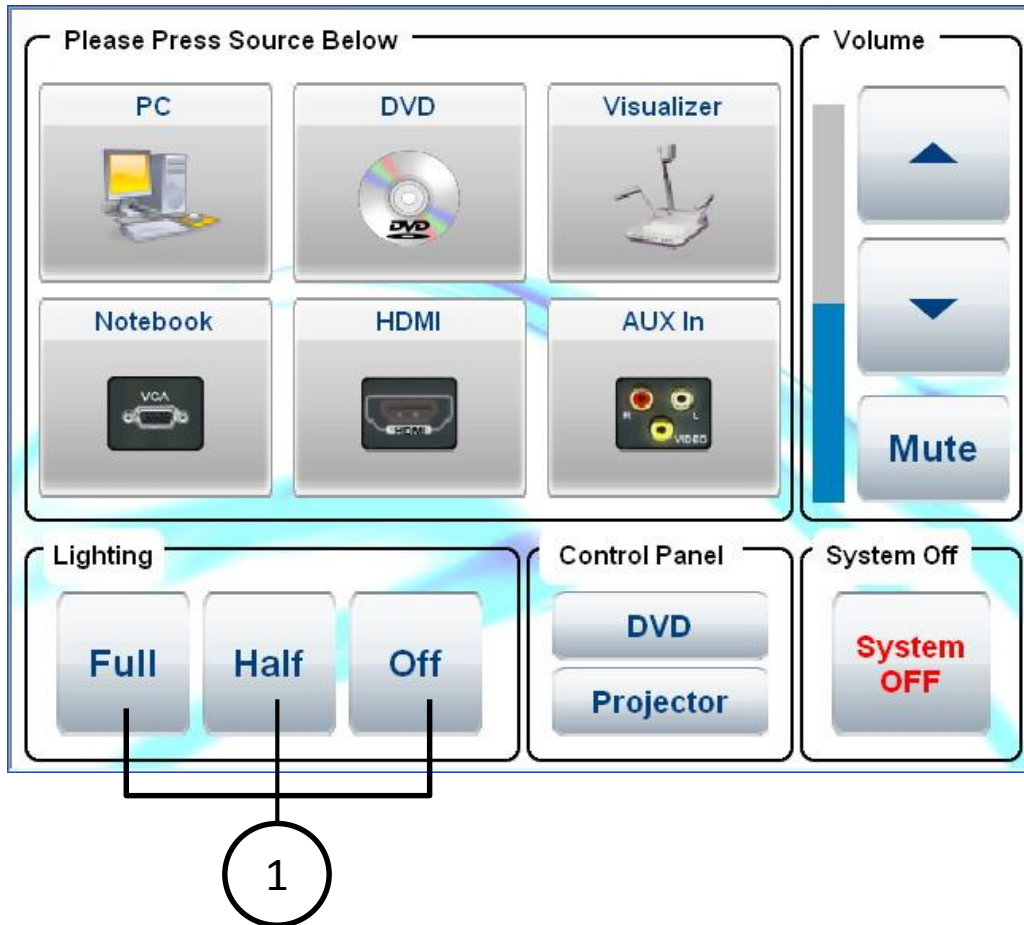
This interface features a 'DVD Control' section with a numeric keypad (0-9), Menu, Display, Top Menu, Return, Cancel, Stop, Enter, and Down buttons. A 'Volume' section includes a vertical slider and buttons for Up, Down, and Mute. A 'Lighting' section has buttons for Full, Half, and Off. Additional buttons for Return and Main Page are located to the right.

Way to display the video using Ext. AV Equipment



1. Connect your composite video cable and audio cables from the wooden cable cubby to your AV equipment.
2. Press the icon "Aux In".
3. Press the projector(s) for "Aux In" display
4. Wait for around 40 seconds for projector warm-up.
5. After use, press the "System Off" icon to turn off the projector.

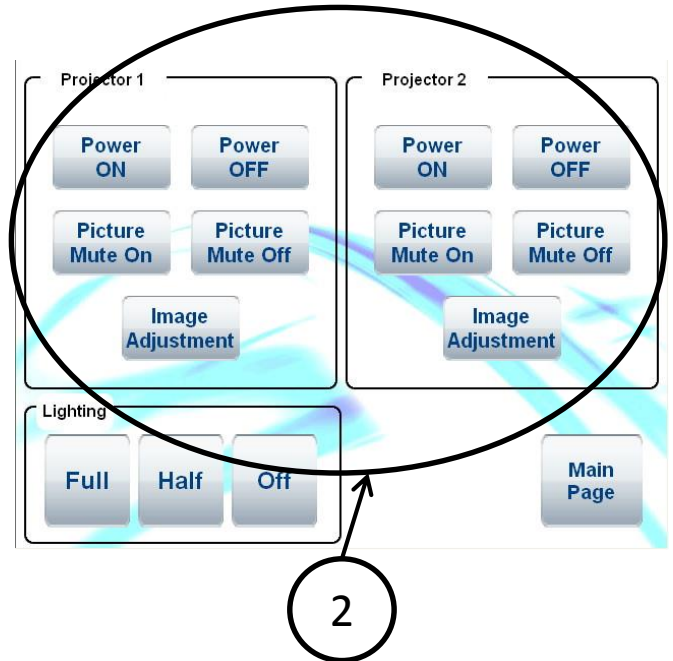
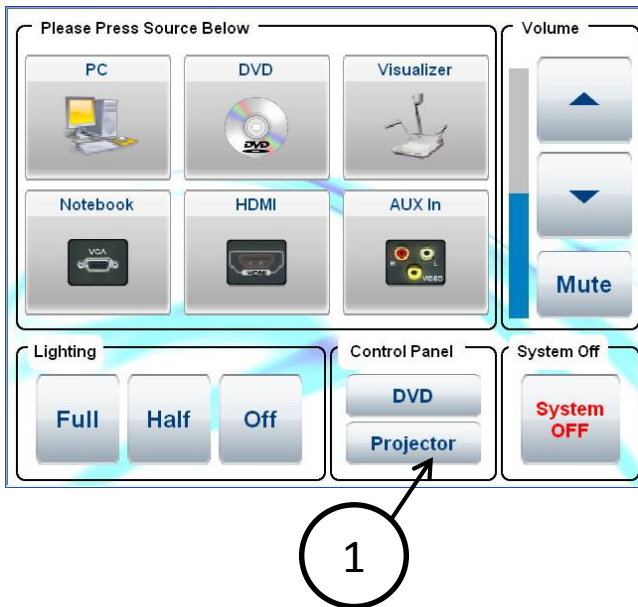
Way to set room lighting



Select the desired light presets

1. Press **“FULL”** lighting button when using the white board
2. Press **“Half”** lighting button when using the projectors.
3. Press the **“Off”** when playing DVD.

Way to control the projectors



1. Press **“Projectors Control”** icon then

2. Select the desired function of projectors

Power ON – power on the projector

Power OFF – to power off the projector

Picture Mute On -- mute the projector image

Picture Mute Off – project image

Image Adjustment – To adjust the projector image to match the computer resolution and frequency