

Installation Guide for Clients using Windows Vista and WPA/WPA2 security technology

This manual helps you set up your notebook computer to access the Internet via the CityU Wireless LAN service. You should have the following items:

- Windows Vista installed in the notebook computer
- Built-in or an External Wireless Network Interface Card (IEEE 802.11a, b, g or n compatible)
- Network Connection Account


Step 1: Wireless Network Card Installation

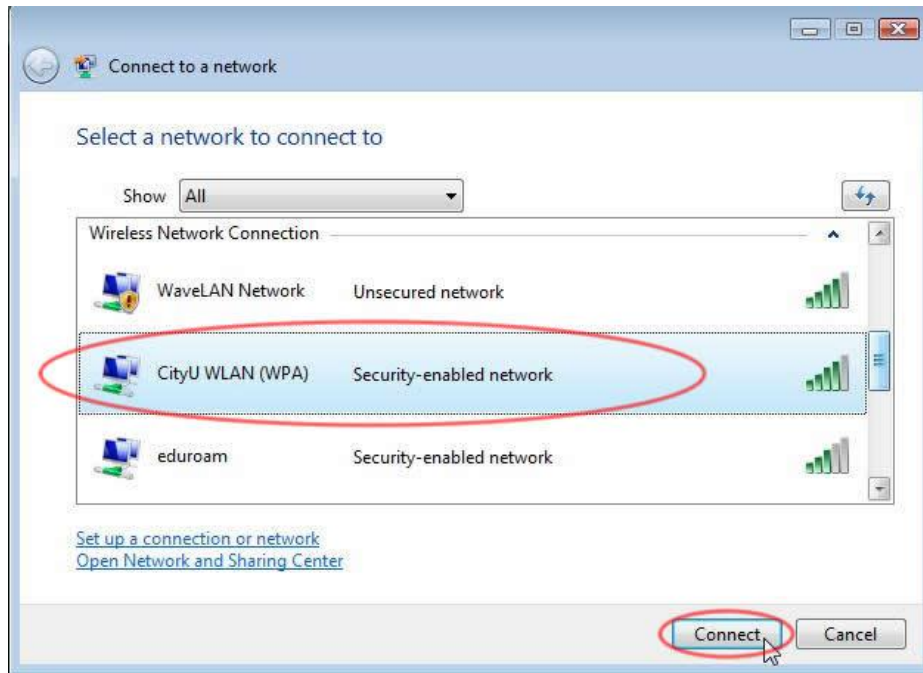
1. If your computer has a built-in WLAN card, the bundled Windows Vista will recognize it and you may skip to step 2.
2. If you are using an external WLAN card, you can insert your WLAN interface card into the computer.
3. Turn on the computer and Windows Vista will detect the card and install the driver automatically.

If you are using a WLAN card that is not recognized and supported by Windows Vista natively, you may install the driver manually. Please follow the steps described in the installation guide that comes with your WLAN card.

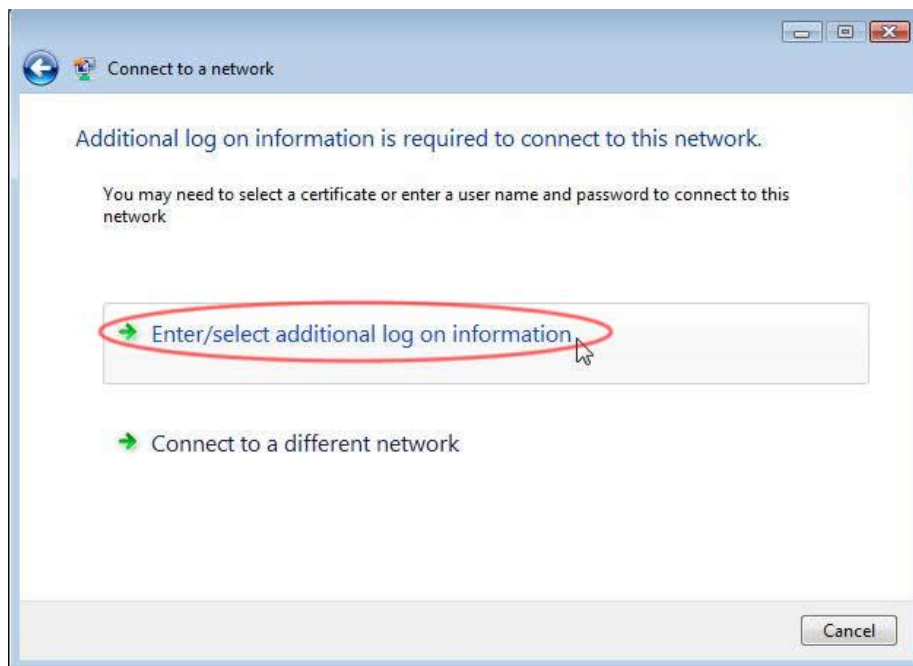
Step 2: Connecting to CityU WLAN



1. Click the  and select "**Connect to**" from the start menu. Scroll down to the "**Wireless Network Connection**" and you will see the following figure.



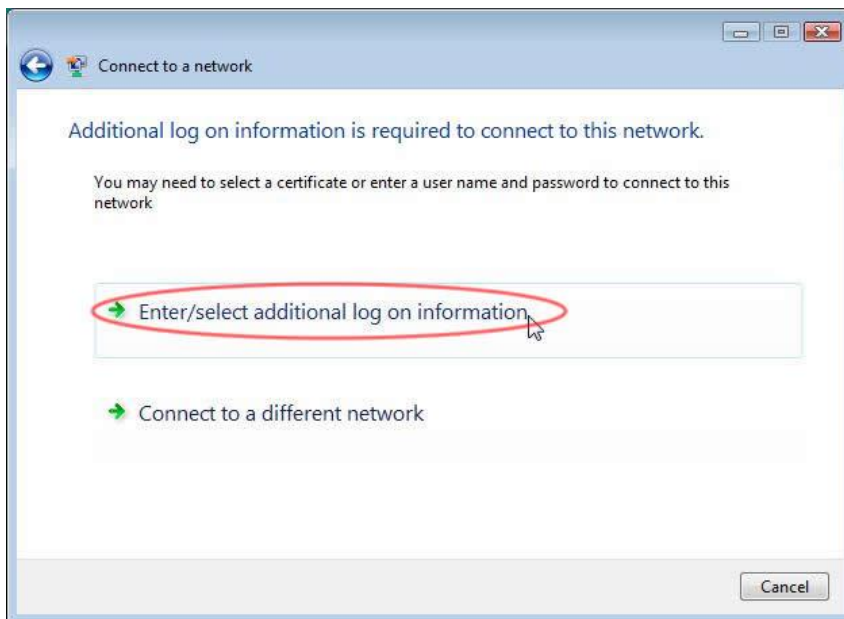
2. Select the "CityU WLAN (WPA)" option and click the "Connect" button to establish connection. A screen saying that additional log on information is required to connect to this network.



Click on the "Enter/Select additional log on information" option and a dialog box asking for your credentials will be shown. Enter your user name and password for verification.



Select "**Enter/select additional log on information**" option again in the next screen.



"**Validate Server Certificate**" screen will pop out. The Root Certification Authority for the WLAN server's certificate is either

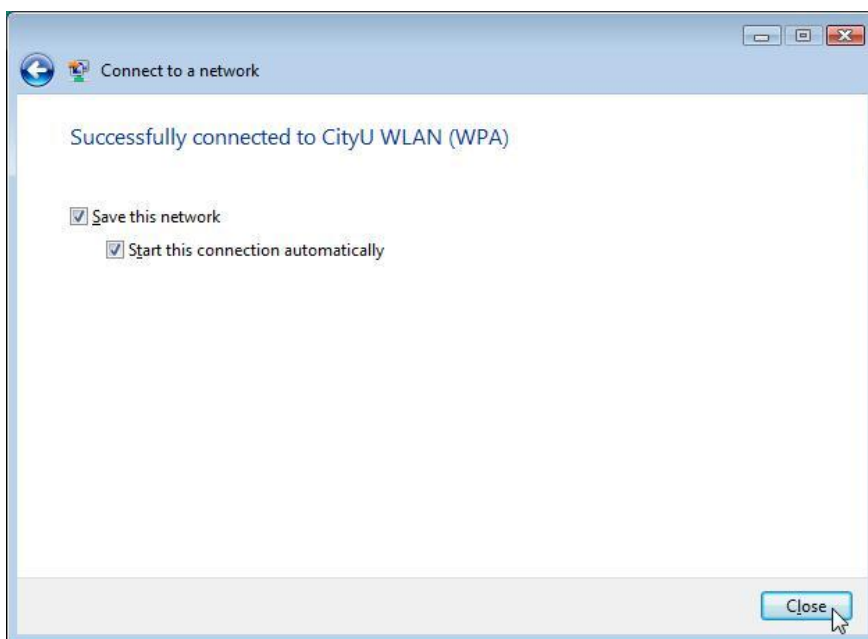
- A. **Entrust.net Secure Server Certification Authority** or
- B. **DigiCert High Assurance EV Root CA**

Example:




Press "OK" to continue if the information shown is correct, otherwise you may properly connect to the rouge/unknown server and you should "Cancel" the connection immediately.

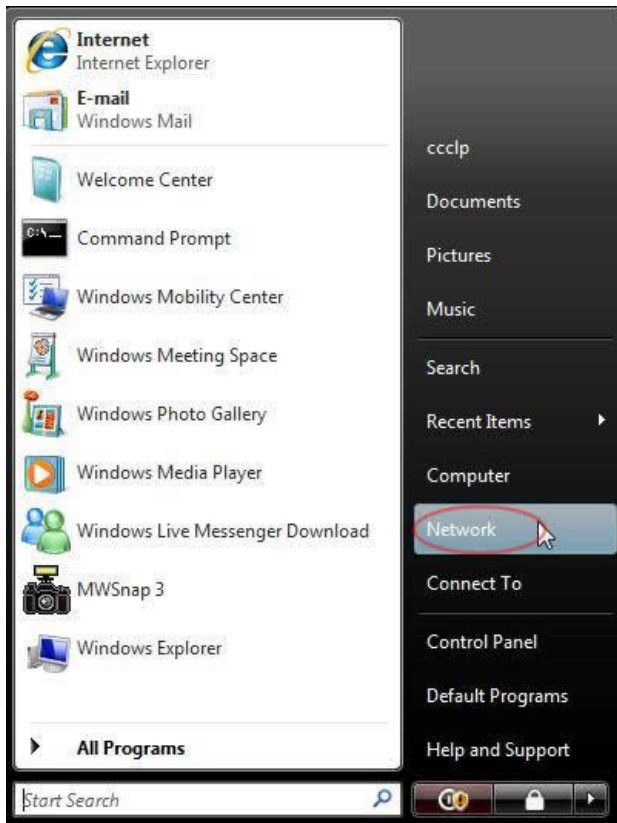
3. You can now access the campus network or the Internet upon successful login. You may want to save this configuration and automatically login whenever the **CityU WLAN (WPA)** network is detected.



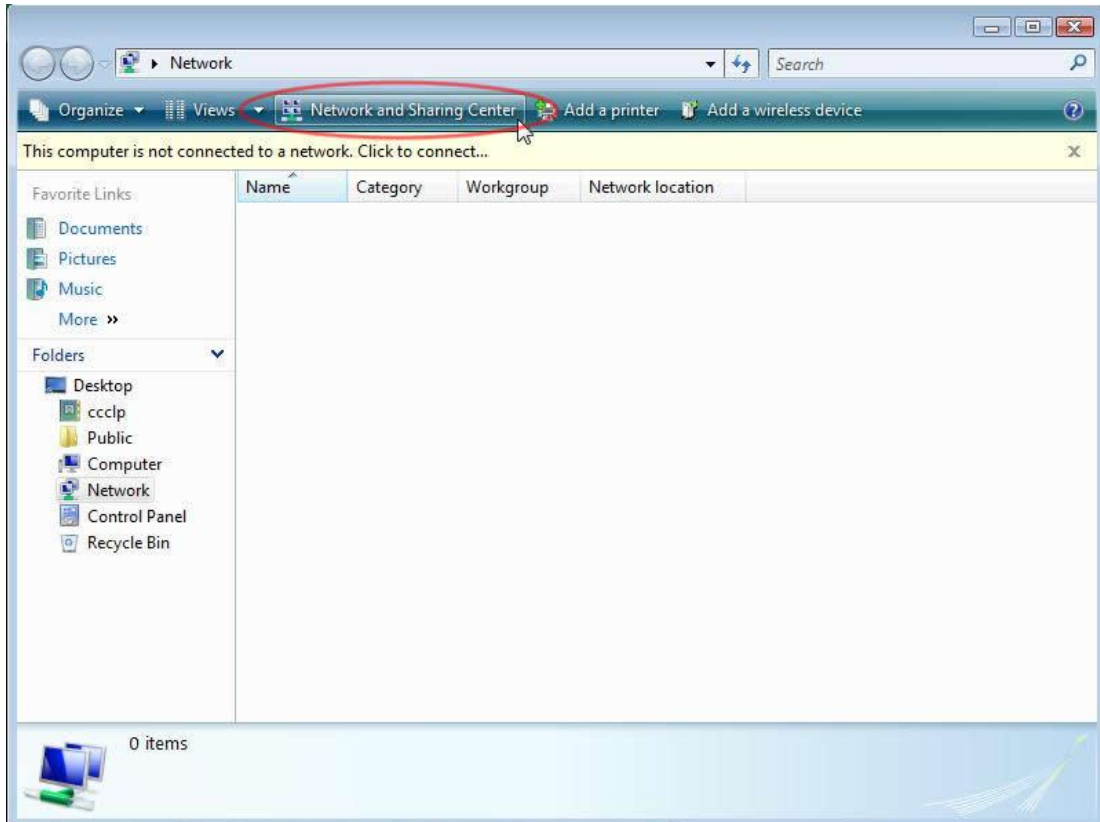
4. By default, your credentials are automatically stored in the computer for later use. Hence, the system will not ask for your credentials the next time your wireless device connecting to the **CityU WLAN (WPA)**. If you want to be prompted for the credentials every time establishing a connection, please follow the steps below as such your credentials will not be stored.



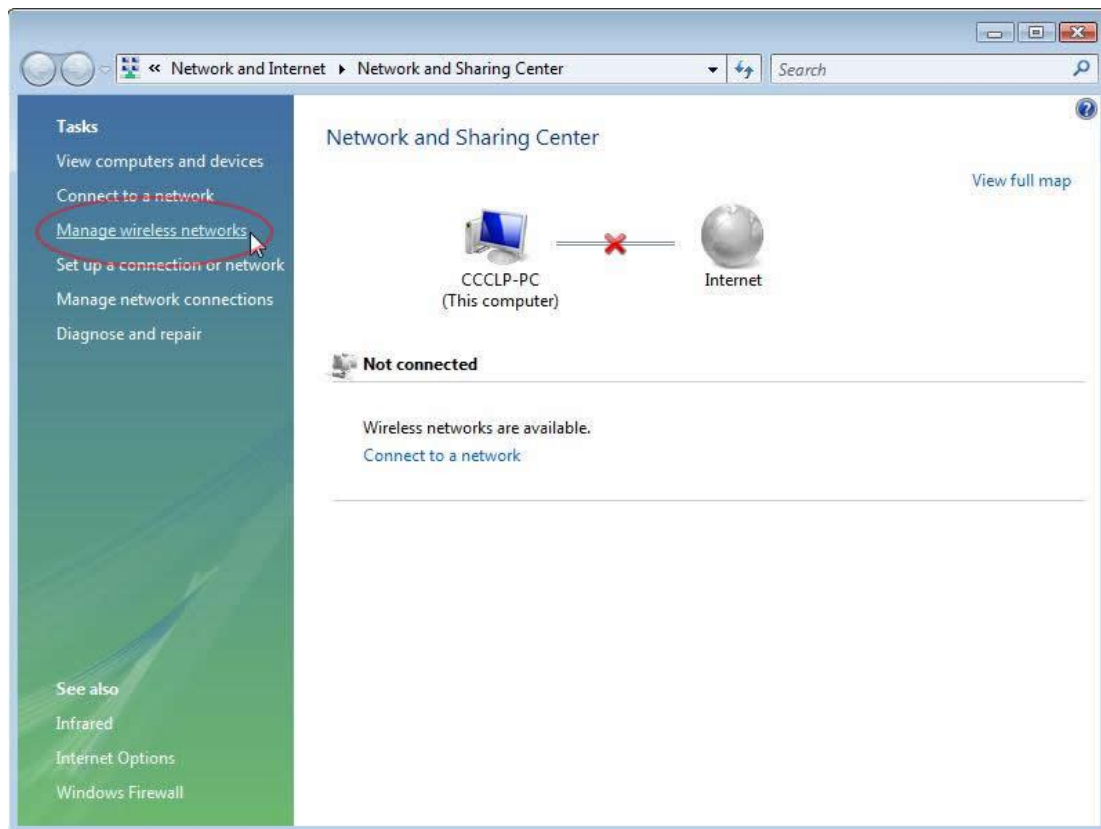
Click the  button and select "Network".



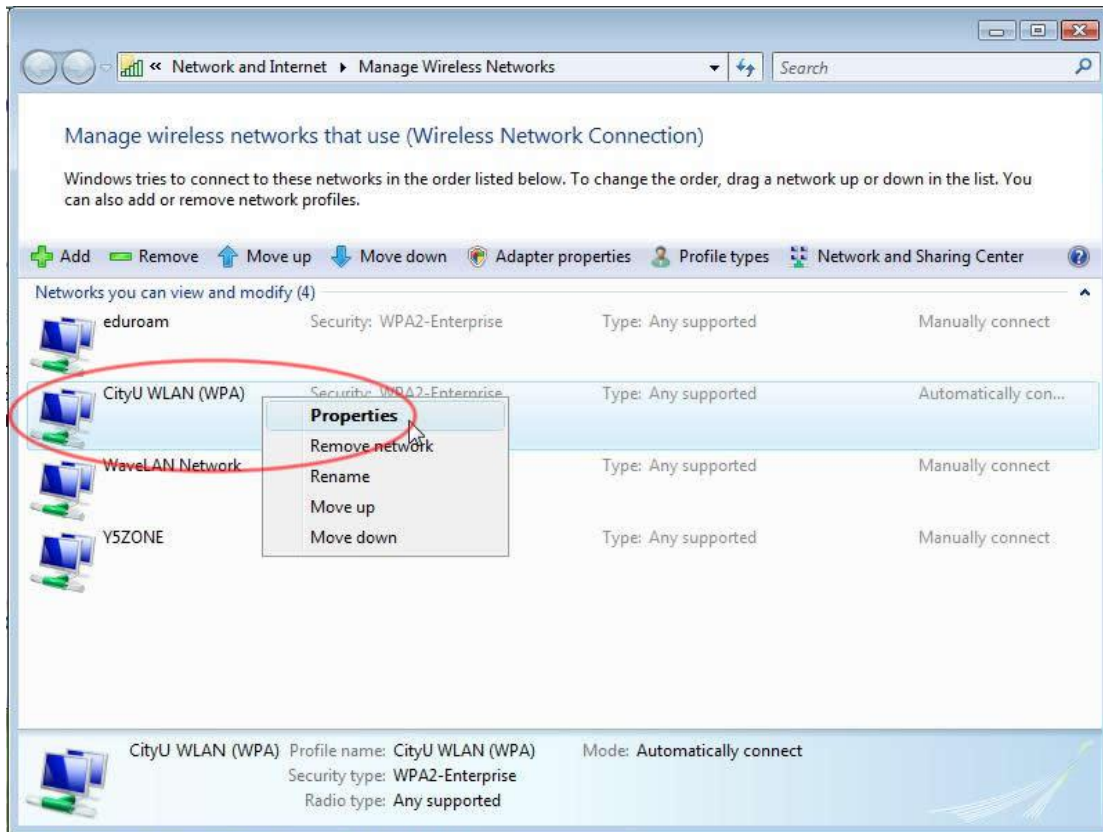
Select "Network and Sharing Centre".



Select "**Manage wireless networks**".



You will see the available profiles created in the previous steps. Right click "**CityU WLAN (WPA)**" and select "**Properties**" option.



Select the "Security" tag and uncheck the "Cache user information for subsequent connections to this network" and press "OK" to save the setting.

