

# UNDERGRADUATE PROGRAMMES



## COLLEGE OF LIBERAL ARTS AND SOCIAL SCIENCES



JS1112

**BSocSc Psychology (Streams: Health and Development / Mind and Brain)**

Subjects included  
Best 4 subjects  
(including English Language)

Subject Weightings  
English Language **x2**

### Features



Individualised Mentorship



Joint Degree with Columbia University\*



Overseas Experience

Scan me for details



Flagship Scholarships

\* Applicants must meet both the general entrance and programme-specific requirements for CityUHK and Columbia University.

3442 8991 | sspcy@cityu.edu.hk | cityu.edu.hk/class

## DEPARTMENT OF CHINESE AND HISTORY



JS1103 **BA Chinese and History (Streams: Chinese / History and Cultural Heritage)**

Subjects included

3 core + 2 elective subjects

Subject Weightings

English Language **x2**  
Chinese Language

Chinese History **x1.5**  
Chinese Literature  
History  
Visual Arts

3442 2054 | cah@cityu.edu.hk | cah.cityu.edu.hk

## DEPARTMENT OF LINGUISTICS AND TRANSLATION



JS1109 **BA Linguistics and Language Applications (Features: General Linguistics / Computational Linguistics / Corpus Linguistics / Experimental Linguistics / Language Technology and Applications)**

Subjects included

3 core + 2 elective subjects

Subject Weightings

English Language **x2**

Chinese Language **x1.5**  
Mathematics

3442 8705 | LTenquiry@cityu.edu.hk | lt.cityu.edu.hk

## DEPARTMENT OF PUBLIC AND INTERNATIONAL AFFAIRS



JS1102 **BSocSc International Relations and Global Affairs (Streams: Asian Studies / International Studies / Development Studies)**

Subjects included  
Best 5 subjects  
(including English Language)

Subject Weightings  
English Language **x1.5**

JS1108 **BSocSc Public Affairs and Management (Streams: Public Affairs and Governance / Public Policy and Management)**

Subjects included  
3 core + 2 elective subjects

Subject Weightings  
English Language **x1.5**

3442 6355 | pia.enquiry@cityu.edu.hk | cityu.edu.hk/pia

## DEPARTMENT OF ENGLISH



JS1104 **BA English (Streams: English and Professional Communication / Language and Literature)**

Subjects included

Best 5 subjects  
(including English Language)

Subject Weightings

English Language **x2.5**

Literature in English **x1.5**

3442 8870 | english@cityu.edu.hk | en.cityu.edu.hk

## DEPARTMENT OF MEDIA AND COMMUNICATION



JS1106 **Media and Communication (Majors: BA Digital Television and Broadcasting / BA Media and Communication)**

Subjects included

Best 4 subjects  
(including English Language)

Subject Weightings

English Language **x1.25**  
Chinese Language

3442 8677 | com@cityu.edu.hk | cityu.edu.hk/com

## DEPARTMENT OF SOCIAL AND BEHAVIOURAL SCIENCES



JS1111 **BSocSc Crime Science (Features: Crime Prevention / Security Practice / Global Policing / Crime Analytics / Cyber and Future Crimes)**

JS1112 **BSocSc Psychology (Streams: Health and Development / Mind and Brain)**



JS1113 **BSocSc Social Work (Features: Social Engagement and Concern for People's Health and Well-Being / Human Diversities and Sustainability / People-in-Environment Interventions)**

Subjects included  
Best 4 subjects  
(including English Language)

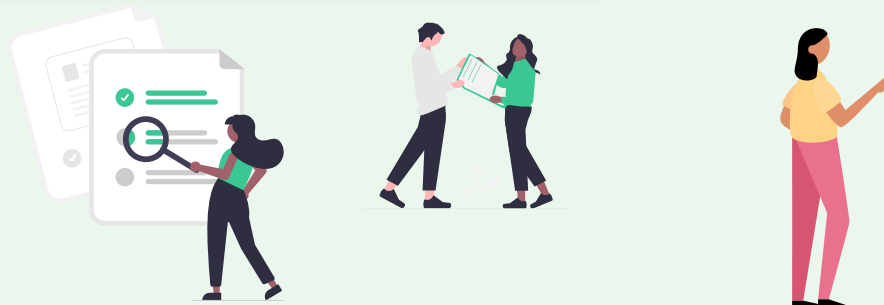
Subject Weightings  
English Language **x2**

### Double Degree

JS1123 **BSocSc Crime Science and Bachelor of Laws (Double Degree)**

Subjects included  
Best 5 subjects  
(including English Language)

3442 8991 | ssgo@cityu.edu.hk | ssweb.cityu.edu.hk



For the latest programme information, please visit:



# INTERNATIONAL EXPOSURE

Vast opportunities to explore the world through:

- 🎓 International Exchanges
- 🎓 Cultural and Language Immersion

Some of our partner institutions include:

- 🎓 Hertford College, University of Oxford, UK 
- 🎓 The University of Queensland, Australia 
- 🎓 Erasmus University Rotterdam, The Netherlands 
- 🎓 Université de Montréal, Canada 
- 🎓 Meiji University, Japan 

For the full list of our partner institutions, please visit our website.



## Joint Bachelor's Degree Program between City University of Hong Kong and Columbia University

The Program offers students an international undergraduate educational experience – a program spanning two continents, in cosmopolitan cities that allow students to engage directly with the world around them.

Eligible majors:

- 🎓 International Relations and Global Affairs
- 🎓 Linguistics and Language Applications
- 🎓 Psychology
- 🎓 Public Affairs and Management (applicable to the Public Affairs and Governance stream)



For more information, please visit: [cityu-hk.gs.columbia.edu](http://cityu-hk.gs.columbia.edu)



## Study Tours

CLASS departments organise overseas study tours to maximise students' global experience through self-discovery.



College of Liberal Arts and Social Sciences  
City University of Hong Kong



College of Liberal Arts and Social Sciences

香港城市大學  
City University of Hong Kong

College of Liberal Arts and Social Sciences

- 📞 +852 3442 7151
- ✉ [chgenoff@cityu.edu.hk](mailto:chgenoff@cityu.edu.hk)
- 🌐 [cityu.edu.hk/class](http://cityu.edu.hk/class)



Admissions Office

- 🌐 [www.cityu.edu.hk/admo](http://www.cityu.edu.hk/admo)

# UNDERGRADUATE PROGRAMMES (JUPAS ADMISSIONS) (2026 ENTRY)



College of Liberal Arts and Social Sciences

香港城市大學  
City University of Hong Kong