



**WE INNOVATE  
• GO GLOBAL**

## Rankings + Achievements:

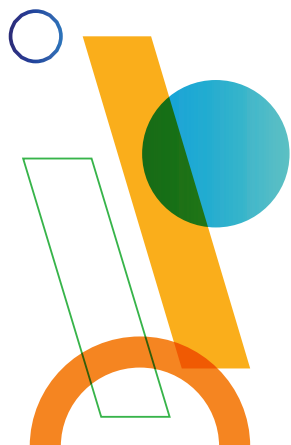
**#1** [THE] Most International Universities  
in the World 2024 & 2025

**#10** [QS] Asia University Rankings 2025

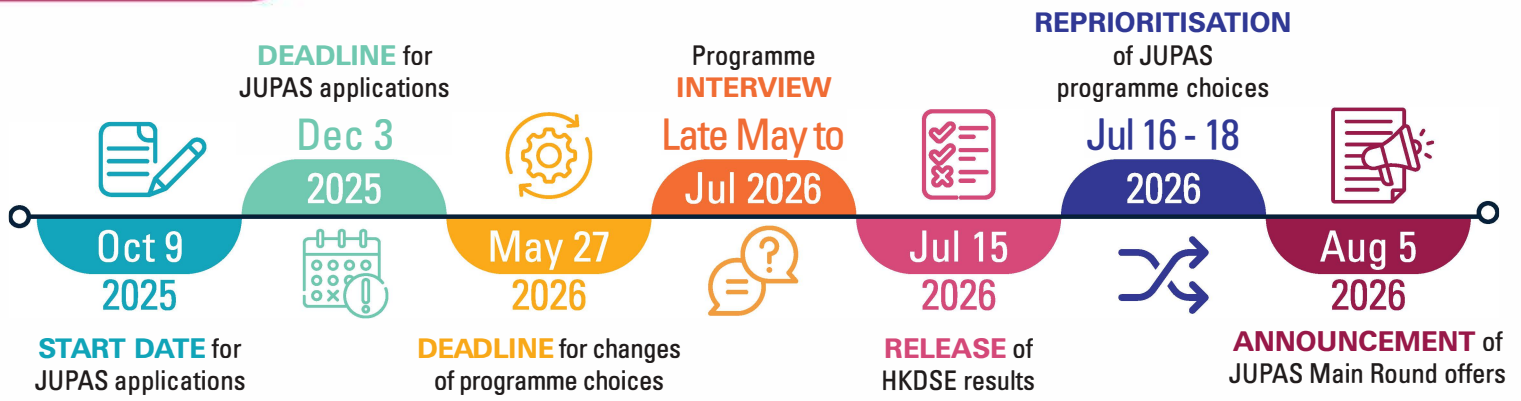
**#78** [THE] World University Rankings 2025

**>400** Exchange Partners in over 40  
Countries/Regions Around the World

Students from **>80** countries/regions worldwide



# Key Dates

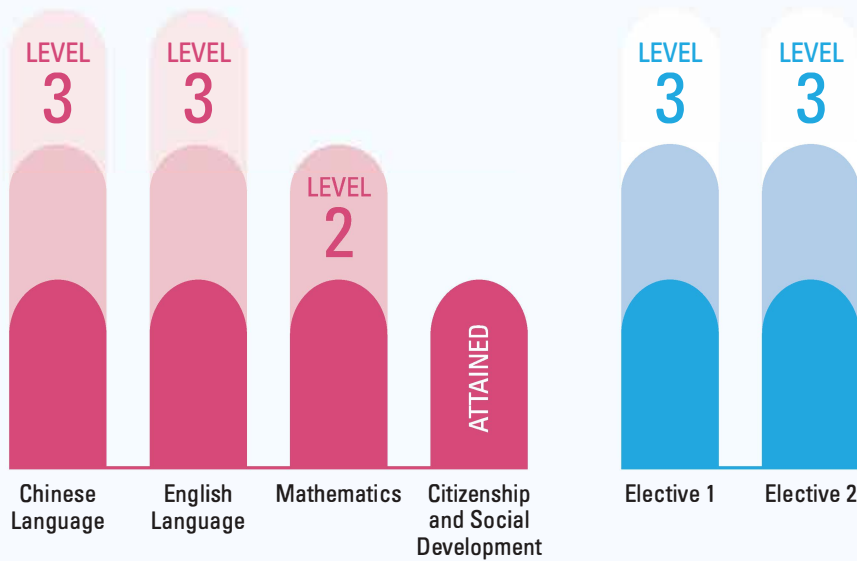


## Entrance Requirements

For admission to Bachelor's degree programmes at the University, applicants must meet the General Entrance Requirements AND programme-specific entrance requirements.

### General Entrance Requirements

HKDSE: 4 Core Subjects + 2 Elective Subjects



### HKDSE Conversion Scores



### Programme-Specific Requirements



## Curriculum Structure

Credit Requirements (for 4-year Degree Programmes)

Minimum Credit Units for Graduation  
**121 credit units, depending on major\***

\*Please refer to the respective programme webpages for details.

#### Gateway Education

31 credit units

#### College/School and Major Requirements

54 – 72 credit units

#### Minor (optional)

15 – 18 credit units

#### Free Electives

Remaining credit units (to fulfill graduation requirements, if necessary)



Students are required to fulfill English language and Chinese language requirements for graduation.



College of Biomedicine



College of Business



College of Computing



College of Engineering



College of Liberal Arts and Social Sciences



College of Science



Jockey Club College of Veterinary Medicine and Life Sciences



School of Creative Media



School of Energy and Environment



School of Law



Double Degree Programmes

## Flagship Programmes

- Globally oriented curriculum for talented students
- Overseas academic/research exchanges at top universities
- Automatically considered for Flagship Scholarships
- Unique Opportunities



More details:



## CityUHK + Columbia U

Direct Admission of Joint Bachelor's Degree Programme



More details:





## Useful Information



Programme-Specific Requirements



JUPAS Score Calculator



CityUHK JUPAS Admission



Fees and Scholarships



FAQs

Follow our IG for the latest updates on CityUHK JUPAS admissions:



IG: cityuadmissions



Admissions Office

## Contact Us

✉ [ugadm.local@cityu.edu.hk](mailto:ugadm.local@cityu.edu.hk)

☎ (852) 3442-7640

📷 [cityuadmissions](#)

📍 Room 3210, 3/F, Yip Kit Chuen Building, City University of Hong Kong, Tat Chee Avenue, Kowloon, Hong Kong

This leaflet is based on the information available at the time of printing in September 2025. The University reserves the right to make changes.

For the latest information, please visit [www.cityu.edu.hk/admo](http://www.cityu.edu.hk/admo).

© City University of Hong Kong

