

## **Exchange the display of Chinese between Traditional (Big5) and Simplified Chinese Character (GB) sets**

### **1. Introduction**

The HanWeb publishing servers supports text-to-text and text-to-image conversions of Chinese Character coded in Big 5 or GB to simplified or traditional Chinese respectively. With a PC connected to CityU campus network, you will be able to display a Chinese page in traditional or simplified Chinese character as desired.

In addition, the text-to-image conversion works no matter under English or Chinese Windows, with or without Chinese fonts support.

### **2. Limitations**

A text-to-text conversion will be performed if the browser used supports the converted language. Otherwise, it will be a text-to-image conversion. However, the text-to-image conversion works properly with Internet Explore 5.0 (IE5) or above only.

Accessing the service via a PC connected to CityU campus network, you will be able to convert any Chinese Web Page on Internet. When you are off campus (except if CityLink Plus is used), it is limited to Web pages hosted on CityU servers, that is, those under the domain cityu.edu.hk.

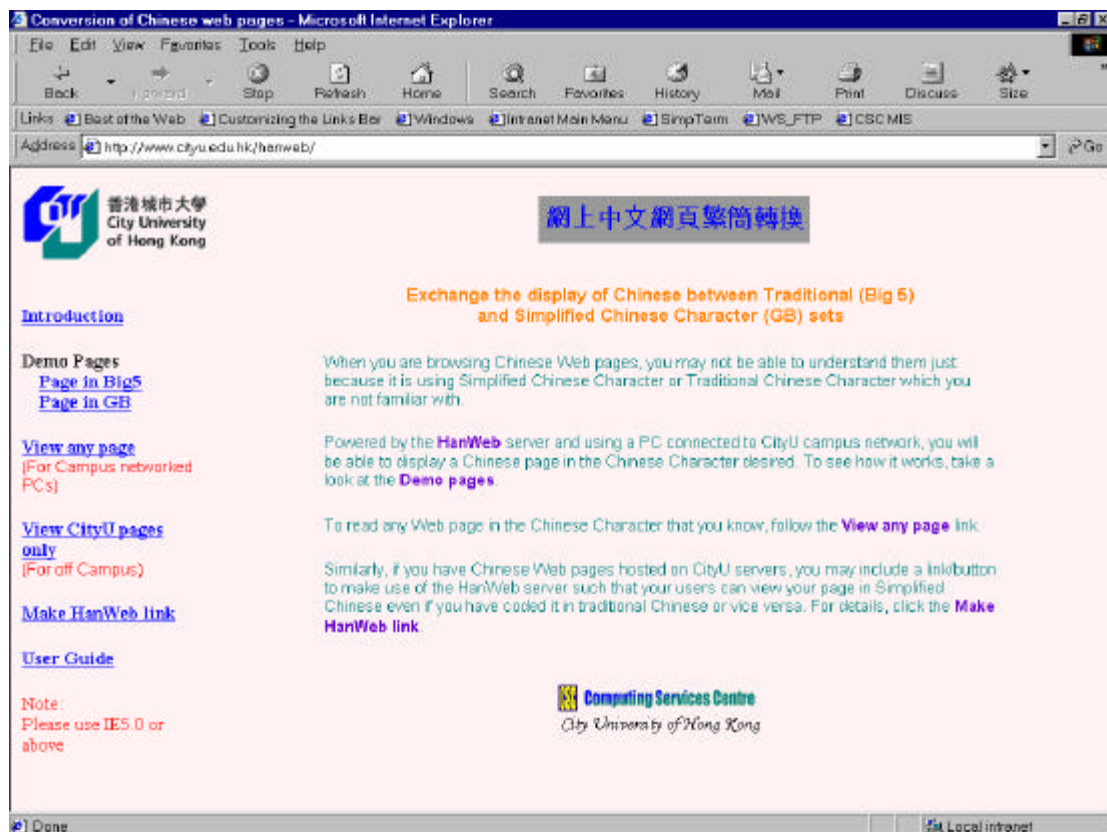
### 3. Using the HanWeb Publishing Server

There are two ways you can use the HanWeb publishing server:

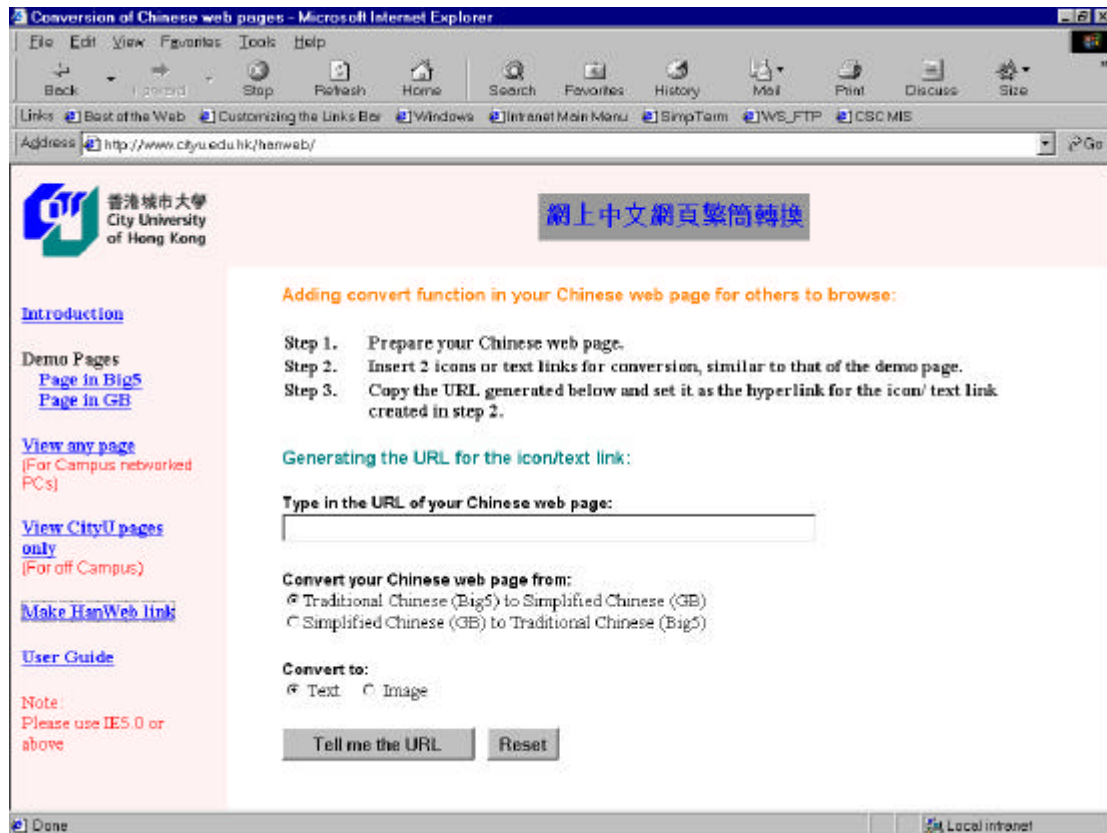
- to real time convert your Chinese web page for others to browse
- to real time convert the Chinese web page that you are browsing

#### 3.1 Converting your Chinese web page for others to browse

When preparing a Chinese web page, you can add an icon for converting the Traditional Chinese web page into Simplified Chinese web page or vice versa. In this case, your readers can click on the icon to convert the Chinese web page to the required Chinese language at their own choice. A demonstration Web page has been setup for reference at: <http://www.cityu.edu.hk/hanweb/>



The “Make HanWeb link” helps you to generate the url for your icon or text link in your Chinese web page.



Or you can construct the URL yourself and the format is:

http://barry1.cityu.edu.hk/han3/[browser support]/[content language]/[translation mode]/[URL of the Chinese web page]

Eg. http://barry1.cityu.edu.hk/han3/1/2/2/http://www.cciv.cityu.edu.hk/~cciv/seminar

[browser support option]

0	Browser does not support Chinese
1	Browser supports Traditional Chinese characters (Big5)
2	Browser supports Simplified Chinese characters (GB2312)

[content language option]

1	Traditional Chinese characters in the original web page (Big5)
2	Simplified Chinese characters in the original web page (GB2312)

[translation mode option]

1	Big5 to GB2312 (To translate Traditional Chinese characters into Simplified Chinese)
2	GB2312 to Big5 (To translate Simplified Chinese characters into Traditional Chinese)

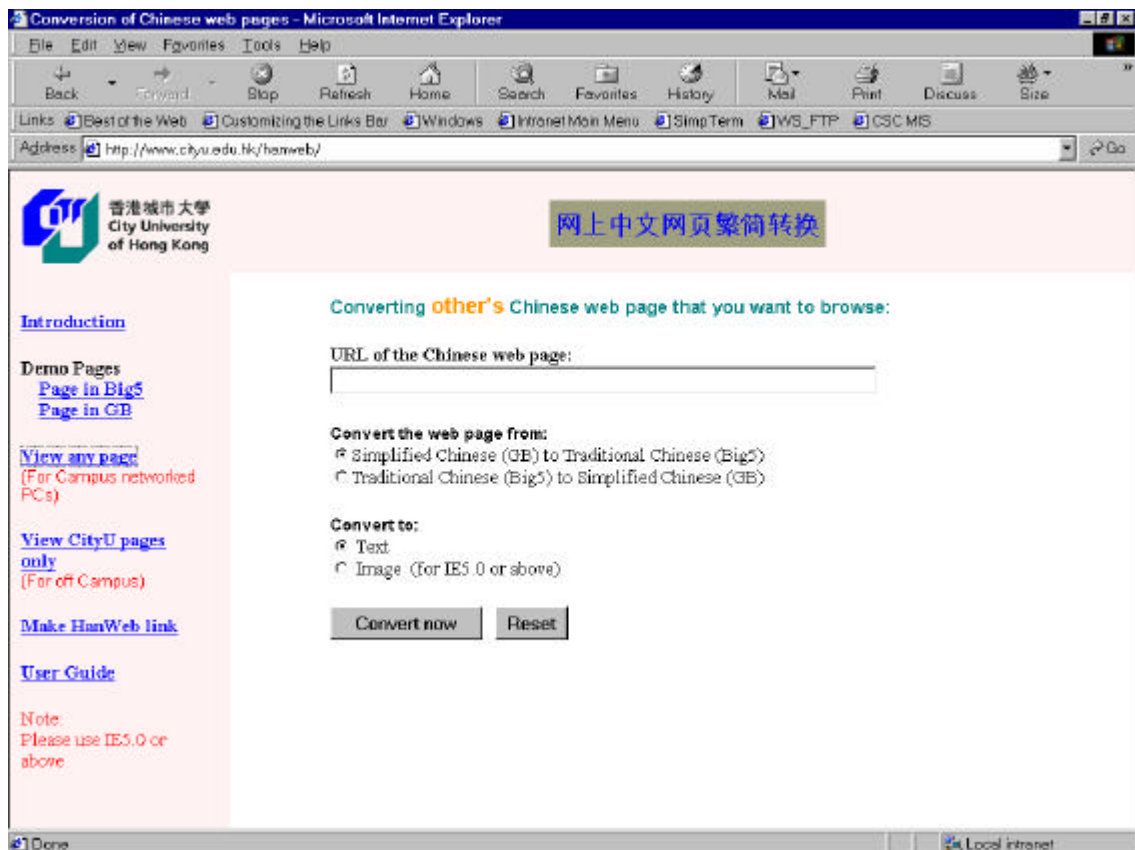
### Important

This service is allowed for web pages hosted on CityU servers only.

### 3.2 Converting the Chinese web page that you are browsing

When browsing Simplified Chinese web page in the Internet, you can use the HanWeb publishing server to convert it into Traditional Chinese or vice versa. You can simply click on the “View any page” link on the homepage:

<http://www.cityu.edu.hk/hanweb/>



Or you can just type the details of the HanWeb server as the prefix of the existing Chinese web page in the URL box of the browser. The syntax is:

http://barry.cityu.edu.hk:1980/han3/[browser support]/[content language]/[translation mode]/[URL of the Chinese web page]

Please note that the syntax and options are the same as in section 3.1 except the server prefix is different. The server **http://barry.cityu.edu.hk:1980** can convert any Chinese web page on Internet but can be used via a campus networked PC only.

#### 4. Advanced options for using HanWeb Publishing Server

There are some advanced options when converting the Chinese web page. The syntax is:

http://barry.cityu.edu.hk:1980/han3/[browser support]/[content language]/[translation mode]/[font image size]/[add space option]/[HK character option]/[URL of the Chinese web page]

[font image size option] (Only for text-to-image translation)

0	The size of font image is same as the original Chinese character
-2 to +4	To decrease or increase the size of font image

[add space option] (Only for text-to-image translation)

0	Do not add space after each font image
1	Add space after each font image

[HK character option] (Only for text-to-image translation)

0	Do not support Hong Kong Supplementary Character Set (HKSCS)
1	Support Hong Kong Supplementary Character Set (HKSCS)

For example, to convert a Simplified Chinese web page into Traditional Chinese, increase the image of the Chinese character by 3, add space after each font image, add support of Hong Kong Supplementary Character Set in the conversion, the prefix with the URL looks like the following:

http://barry.cityu.edu.hk:1980/han3/1/2/2/3/1/1/[URL of Simplified Chinese web page]

## 5. Skipping the conversion in our Chinese web page by using the <kanhanbypass> Tag

When converting a Chinese web page, HanWeb Server adds its information at the beginning of all the hyperlinks within the converted Chinese web page. In some particular case, you may not want the HanWeb Server to do so. Then, you should add a pair of tag “<kanhanbypass>” and “</kanhanbypass>” between the hyperlink.

**For example, here is the HTML code in the conversion without “<kanhanbypass>” tag:**

Before translation:

```
<a href="http://www.yahoo.com">Ya hoo</a>
```

After translation:

```
<a href="http://barry1.cityu.edu.hk/han3/2/1/1/0/0/1/www.yahoo.com">Yahoo</a>
```

**With the pair of “<kanhanbypass>” tag, the HTML code of the hyperlink are the same before and after the conversion.**

Before translation:

```
<kanhanbypass><a href="http://www.yahoo.com">Yahoo</a></kanhanbypass>
```

After translation:

```
<kanhanbypass><a href="http://www.yahoo.com">Yahoo</a></kanhanbypass>
```

## 6. Reference

**For more information about HanWeb Server, please visit:**

[http://www.kanhan.com/webpage/Products/E\\_product.php](http://www.kanhan.com/webpage/Products/E_product.php)