

馬會堂連接互聯網步驟

網絡連接

將網絡線(圖 1)接駁手提或桌上電腦的網絡卡插口(圖 2)



圖 1

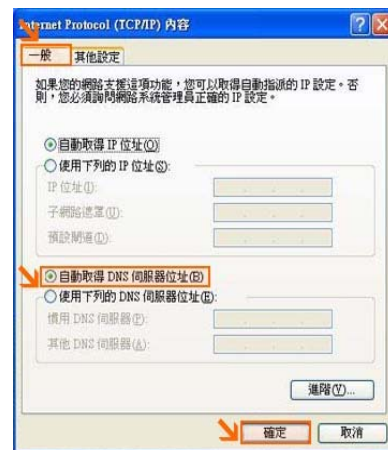


圖 2

註：請勿移動枱上接駁線

成功連接網絡線後，如電腦 未能 連上互聯網，請檢查 IP 設定是否設為自動取得，步驟如下：

1. 進視窗 XP 的『控制台』。
2. 再點選『網路連線』。
3. 點選『區域連線』圖示，再按滑鼠右鍵後選擇『內容』。
4. 在『區域連線內容』視窗的『一般』索引標籤下，按一下『Internet Protocol (TCP/IP)』，然後再按『內容』。
5. 在『Internet Protocol(TCP/IP)』的『一般』索引標籤下，確定已選『自動取得 IP 位址』及『自動取得 DNS 伺服器位址』，然後按『確定』回到『區域連線內容』視窗。



6. 於『區域連線內容』視窗按『確定』離開。
7. 如仍未能成功連上互聯網，請嘗試重新啟動電腦。

若重新啟動電腦仍未能連上互聯網，可聯絡
電訊盈科技術支援

熱線：1833-822

請勿非法下載及上載未經授權之檔案

Procedure For Internet Connection In Jockey Club Hall

Cable & Internet Connection

Please make sure the cable(Fig.1) is properly connected to the Ethernet card slot(Fig.2) of your notebook or desktop.



Fig. 1

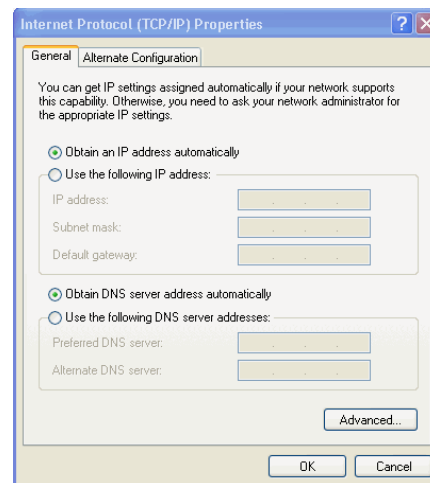
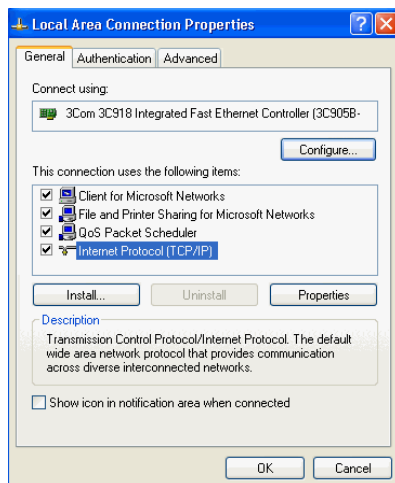


Fig 2

Remark : Please DO NOT unplug any cable which located on the desk.

If your *internet connection failure* after cable properly connected to your Ethernet card as above Fig 3, please check the Internet Protocol setting that shall obtain an IP address automatically , steps in the following:

1. From "**Start**" menu of Windows XP, select "**Control Panel**".
2. Click the icon "**Network Connections**".
3. Select "**Local Area Connection**" and right click of mouse, then select "**Properties**" from the popup.
4. A new window wills popup as below. From the "**General**" tab, select "**Internet Protocol (TCP/IP)**", then click "**Properties**".
5. From the pop-up window, under the "**General**" tab, select "**Obtain as IP address automatically**" and "**Obtain DNS server address automatically**", then click "**OK**" back to "**Internet Protocol (TCP/IP)**" window.



6. From the popup window of "**Internet Protocol (TCP/IP)** ", click "**OK**" close the popup.
7. If your internet could not be connected, please "**restart**" your notebook or desktop.

If your internet is still not connected after the "restart", please contact

Technical Team of PCCW
Hotline:1833-822

Please be reminded that unauthorized download and upload is restricted.