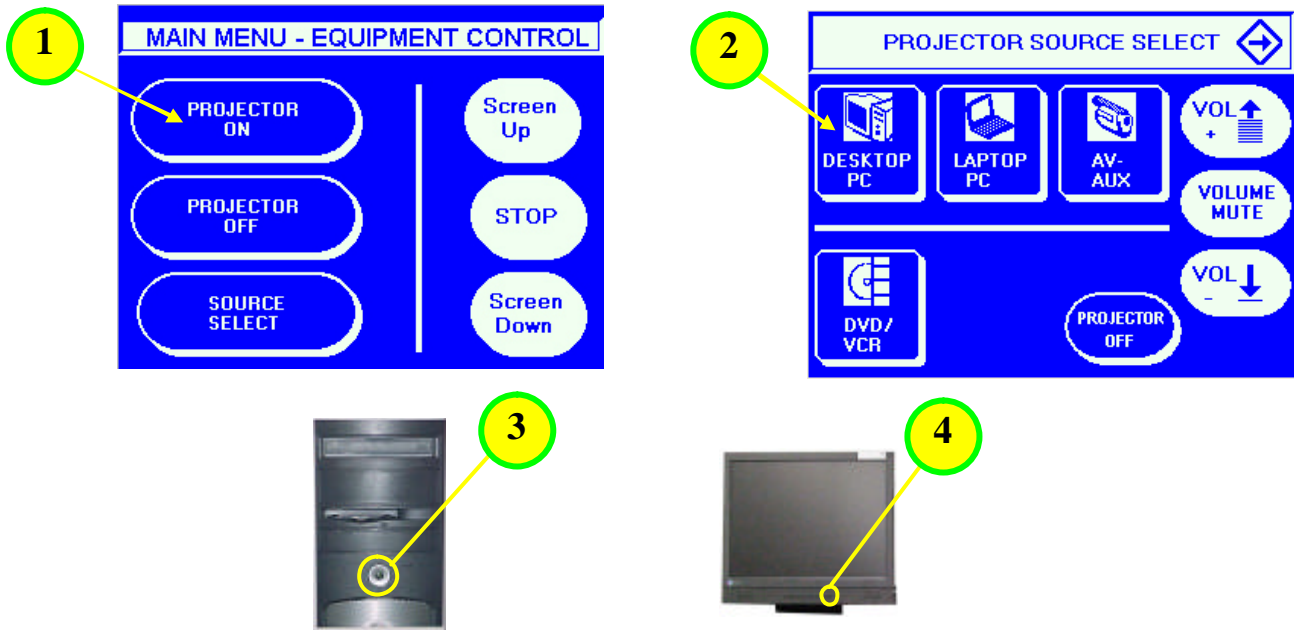
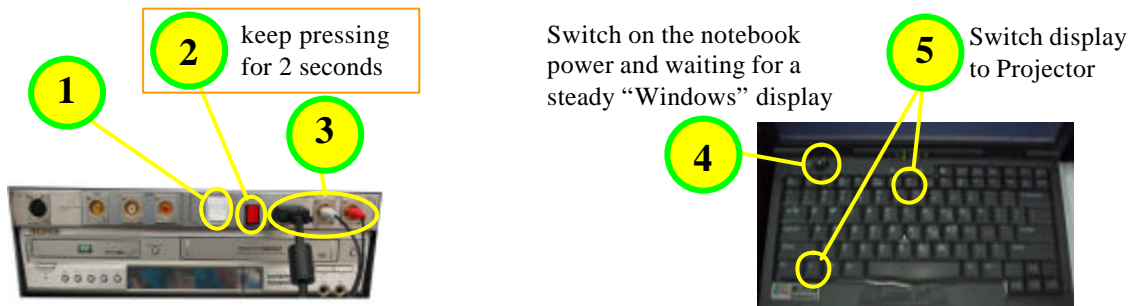


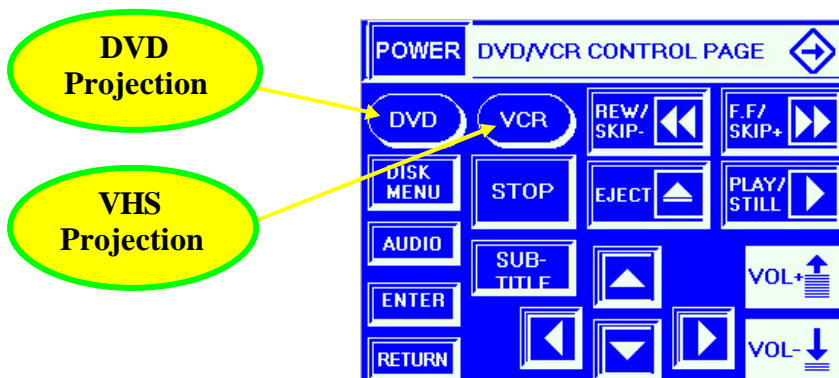
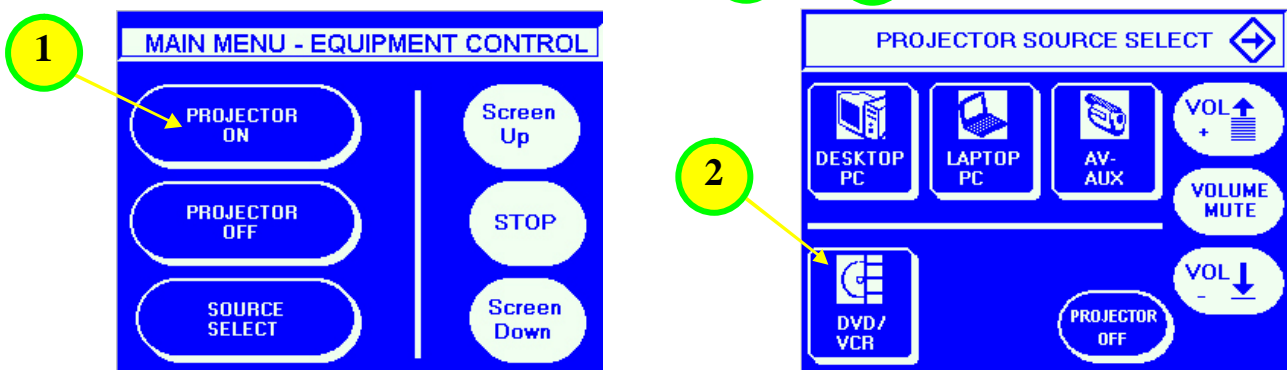
Desktop Computer Projection - Please follow the steps **1** to **4** as shown



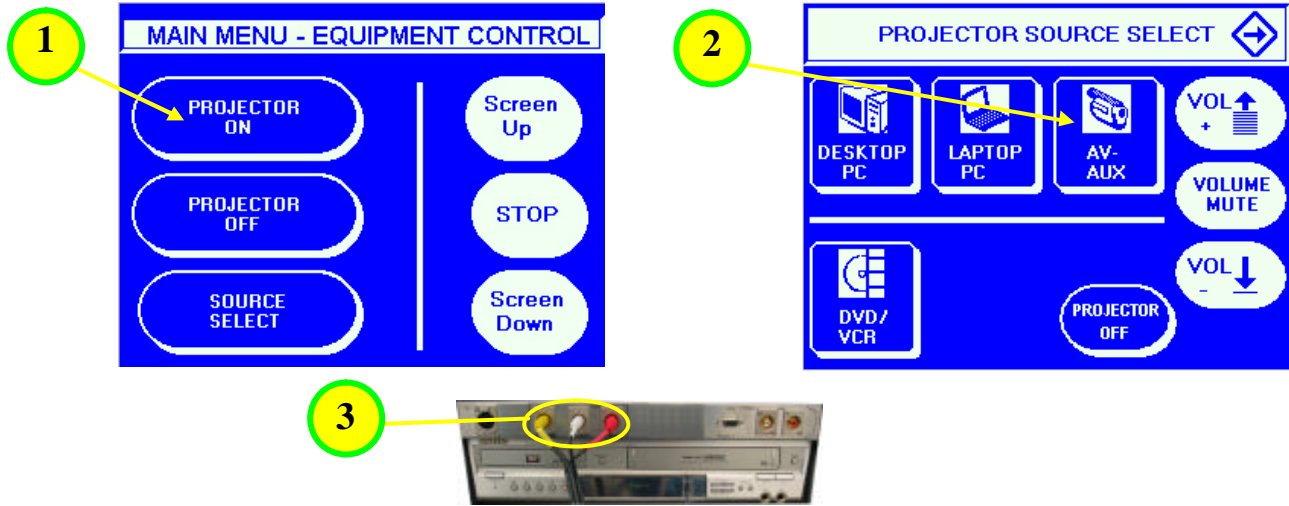
Laptop Computer Projection - Please follow the steps **1** to **5** as shown



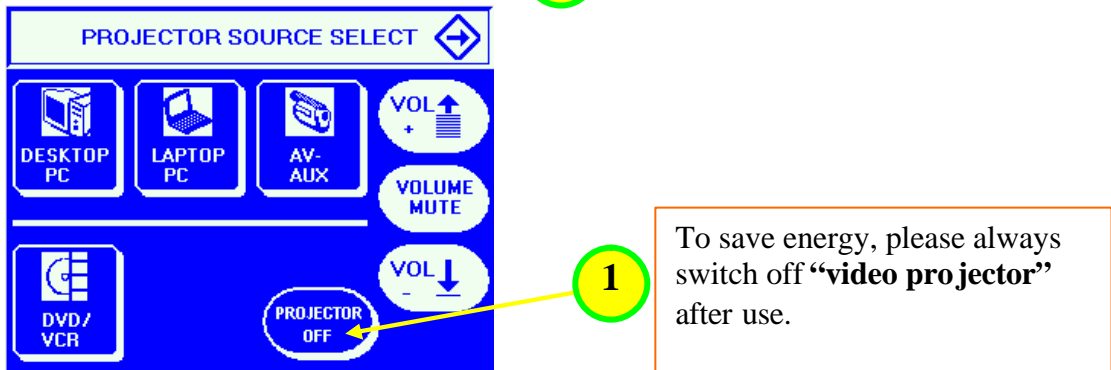
DVD/VHS Projection - Please follow the steps **1** to **2** as shown



External AV Projection - Please follow the steps **1** to **3** as shown



Projection Off - Please follow the step **1** as shown



Remarks: After switching off the Video Projector, it needs (1¹/₂) minutes to cool down before it can be switched on again