

Installation Guide for Windows XP

This manual helps you set up your notebook computer to access the Internet via the CityU Wireless LAN service. You should have the following items:

- Windows XP installed in the notebook computer
- Built-in or an External Wireless Network Interface Card (IEEE 802.11a, b, g or n compatible)
- Network Connection Account

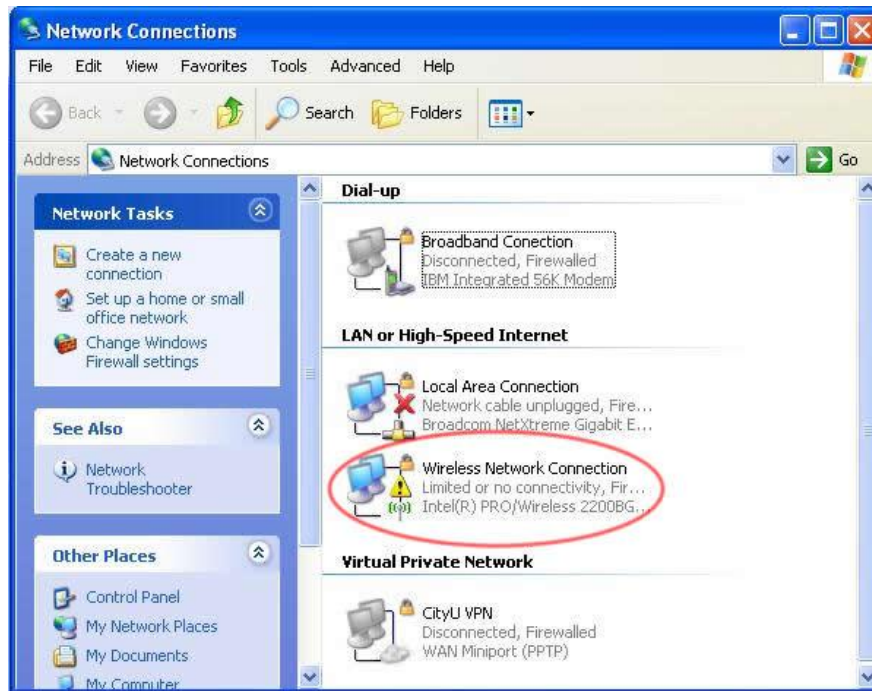
Step 1: Wireless Network Card Installation

1. If your computer has a built-in WLAN card, the bundled WinXP will recognize it and you may skip to step 2.
2. If you are using an external WLAN card, you can insert your WLAN interface card into the computer.
3. Turn on the computer and Windows XP will detect the card and install the driver automatically.

If you are using a WLAN card that is not recognized and supported by Windows XP natively, you may install the driver manually. Please follow steps described in installation guide that comes with your WLAN card or wireless device.

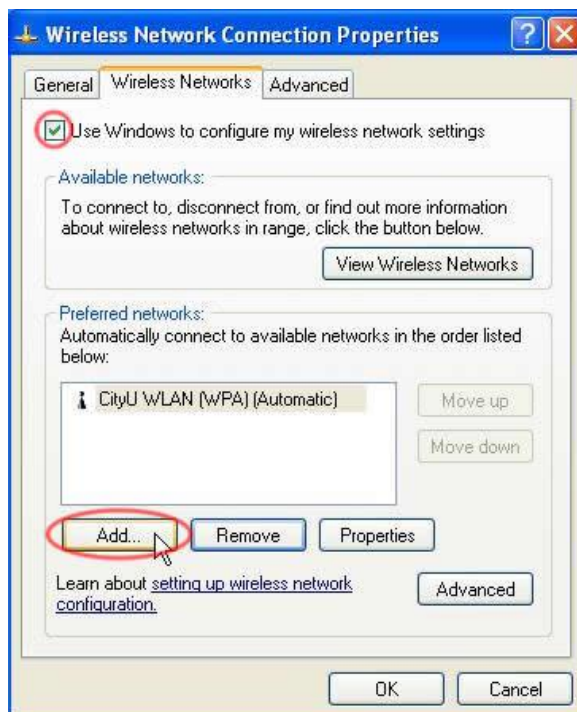
Step 2: Configure Wireless LAN Settings

1. Click "**Start**", "**Connect to**" and then choose "**Show all connections**" from the menu. You should see the "Wireless Network Connection" icon appears similar to the following.

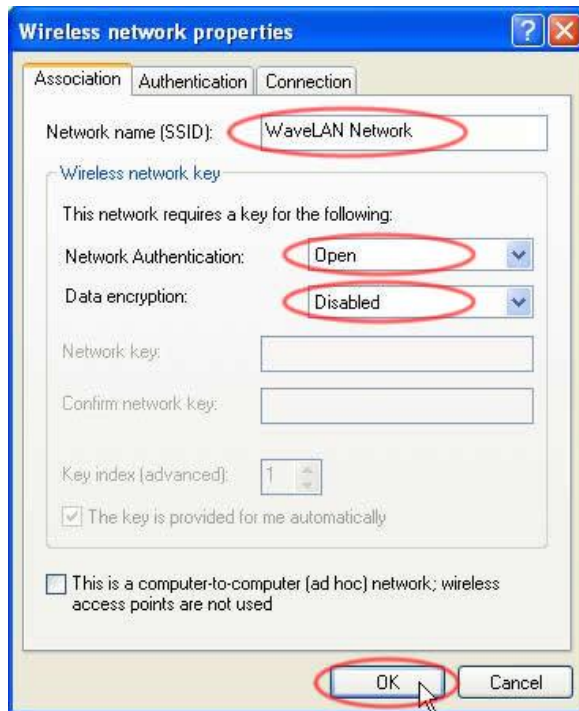


2. Right-click the "**Wireless Network Connection**" icon and choose the "**Properties**" option from the pop-up menu.

3. Select the "**Wireless Networks**" tag click on the "**Add...**" button to add new connection profile.



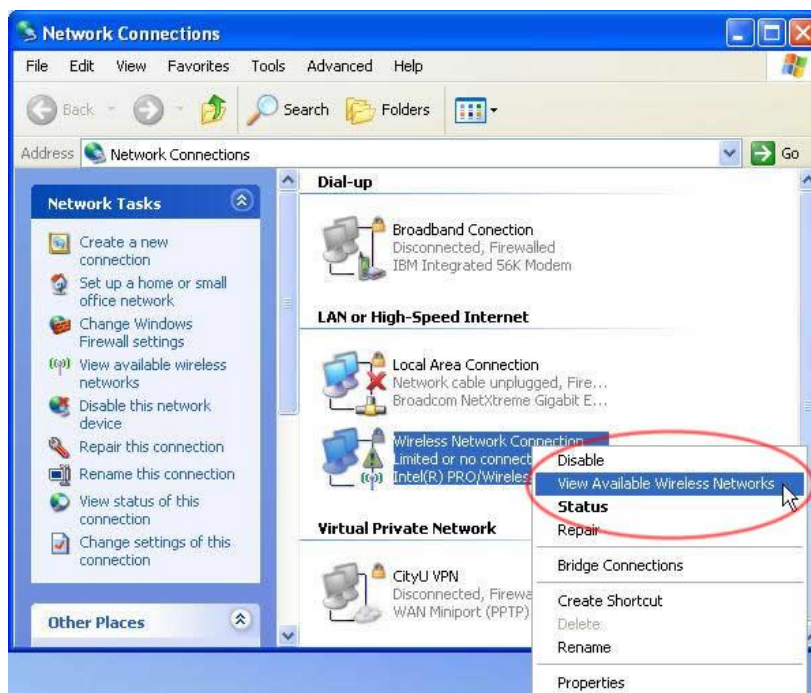
4. Enter the following to add a "**WaveLAN Network**" connection profile:

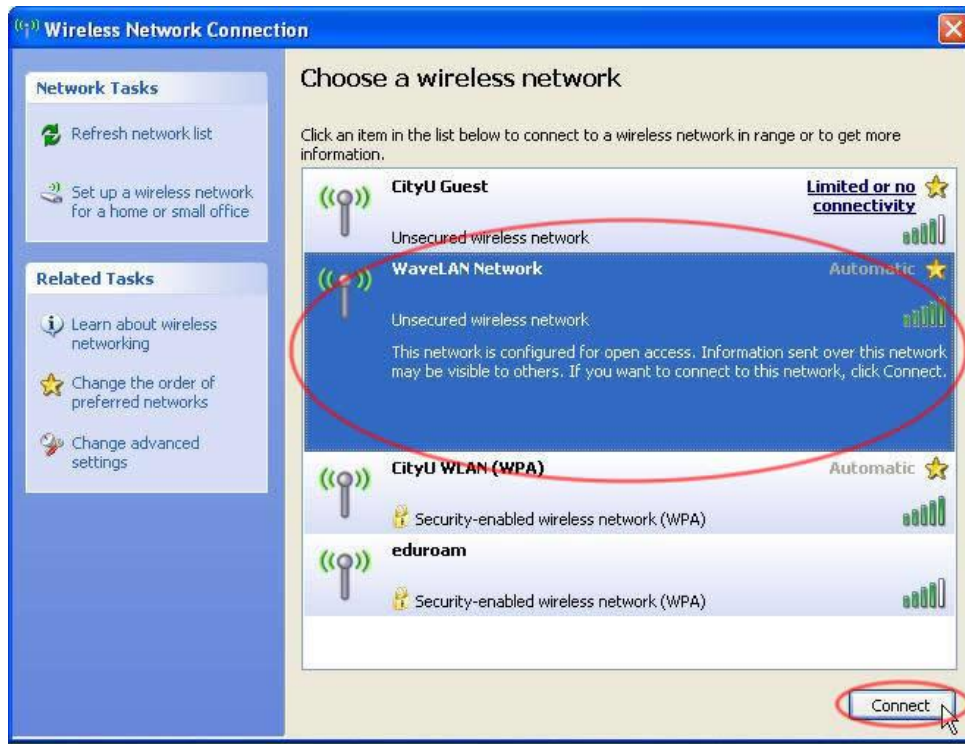


5. Press "OK" to save the new settings.

Step 3: Login CityU WLAN using Web Browser

1. List available wireless network and make sure your notebook computer is connected to the "WaveLAN Network".





2. Bring up your favorite web browser and visit any web page. If you are not yet authenticated, the system will forward you to the login page. Enter your Network Connection Account to logon the CityU WLAN.



3. Upon successful login, you will be redirected to the web page previously entered automatically. You can now access the campus network or the Internet.

