

## **Installation Guide for the Clients using Windows XP to connect to the "eduroam" or "Universities WiFi"**

This manual helps you to configure your notebook computer to connect to the "eduroam" or "Universities WiFi" service. You should have the following items before going further:

- Computer running Windows XP with the latest patches
- Built-in or an External Wireless Network Interface Card (IEEE 802.11a, b, g or n compatible)
- CityU Network Connection Account or a valid WiFi Login Account

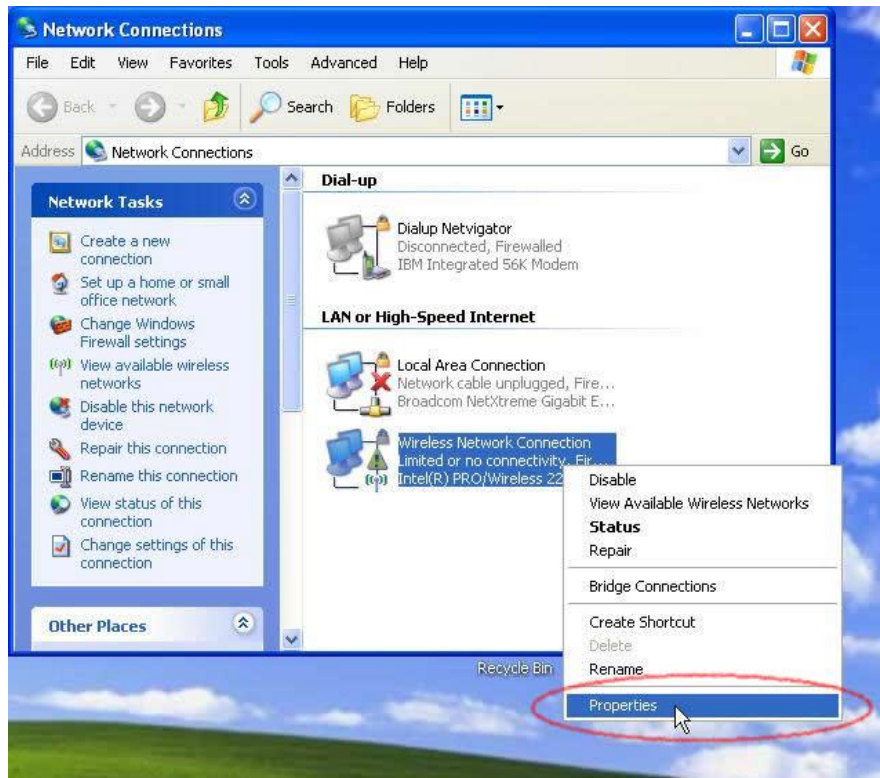
### **Step 1: Wireless Network Card Installation**

1. If your computer has a built-in WLAN card, the bundled WinXP will recognize it and you may skip to step 2.
2. If you are using an external WLAN card, you can insert your WLAN interface card into the computer.
3. Turn on the computer and Windows XP will detect the card and install the driver automatically.

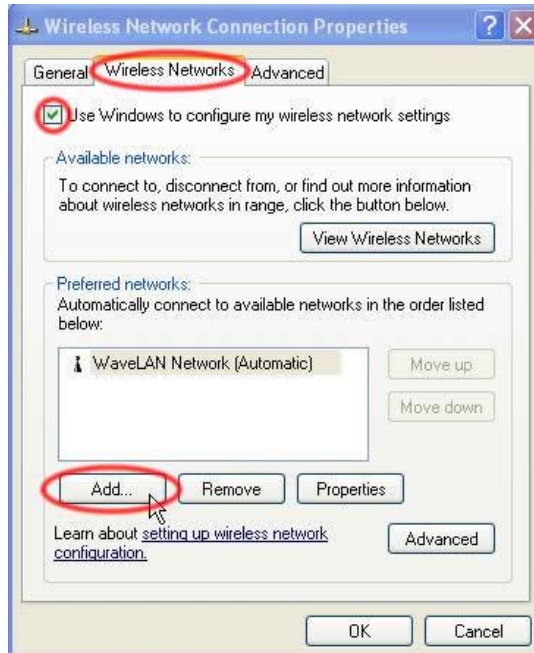
If you are using a WLAN card that is not recognized and supported by Windows XP natively, you may install the driver manually. Please follow the steps described in the installation guide that comes with your WLAN card.

### **Step 2: Create Connection Profile for the "eduroam" or "Universities WiFi" wireless network**

1. Click "Start", "Connect to" and then choose "Show all connections" from the menu. All available network connections will be shown similar to the following figure.
2. Right-click the "Wireless Network Connection" icon and choose the "Properties" option from the pop-up menu.

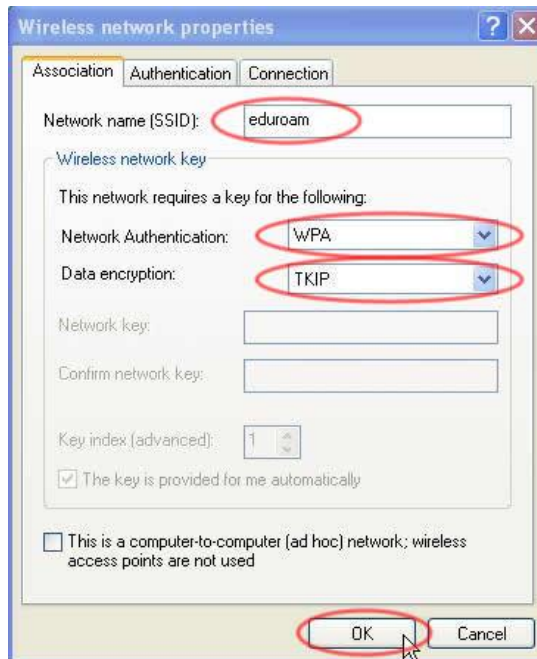


3. Click on the **"Wireless Networks"** tag to change the wireless LAN settings. Press the **"Add"** button to add a new connection profile.

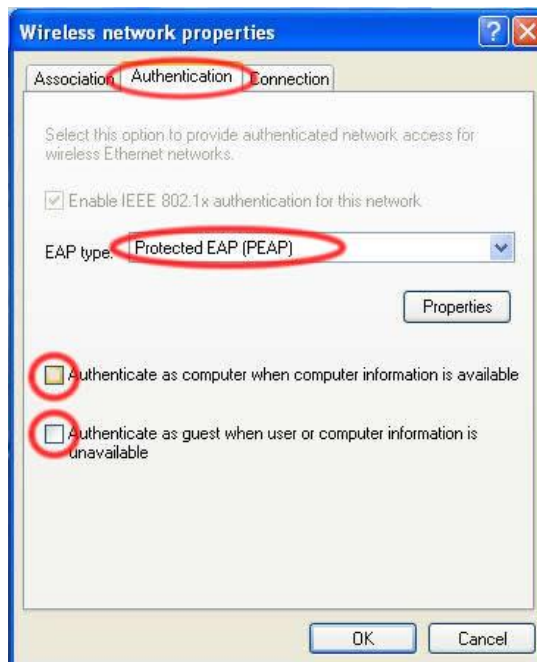


4. Enter the followings to configure the **"Association"** properties for the **"eduroam"** connection. If you are configuring **"Universities WiFi"** connection, please enter **"Universities WiFi"** in the **"Network Name (SSID)"** instead.

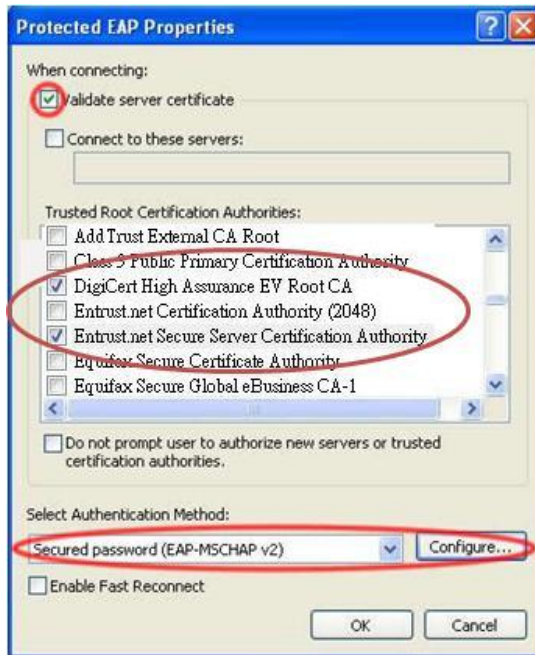
For notebook computers supporting WPA2, you are encouraged to select "**WPA2**" in the "**Network Authentication**" field and "**AES**" in the "**Data Encryption**" field for better data protection.



Select the "**Authentication**" tag and enter the followings to change the authentication properties.



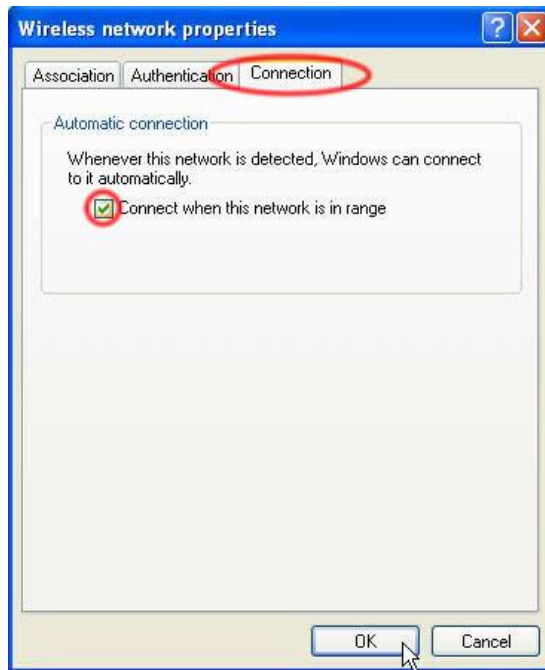
Click on the "**Properties**" button and enter the followings to configure the "**Protected EAP Properties**" window.



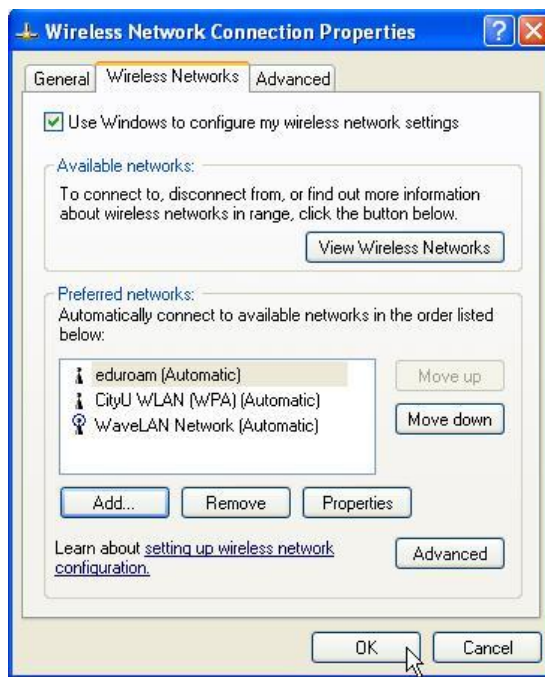
Click on the "**Configure...**" button to tell Windows not to use your Windows logon name and password in the authentication.



5. Press "**OK**" buttons to close the "**EAP MSCHAPv2 Properties**" and "**Protected EAP Properties**" windows until you get back to the "**Wireless network properties**" window. Choose the "**Connection**" tag and check the "**Connect when this network is in range**" box.



Press "OK" button to save the settings. You will see the newly created connection profile in the "**Wireless Network Connection Properties**" window.

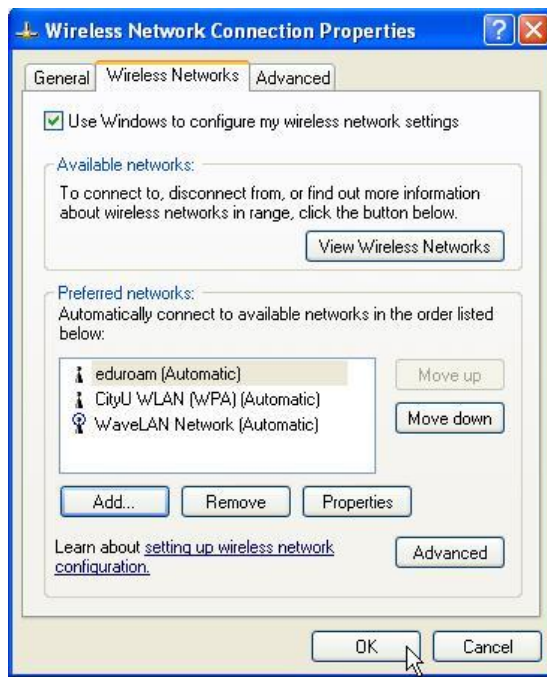


### Step 3: Connecting to the "eduroam" or "Universities WiFi" WLAN

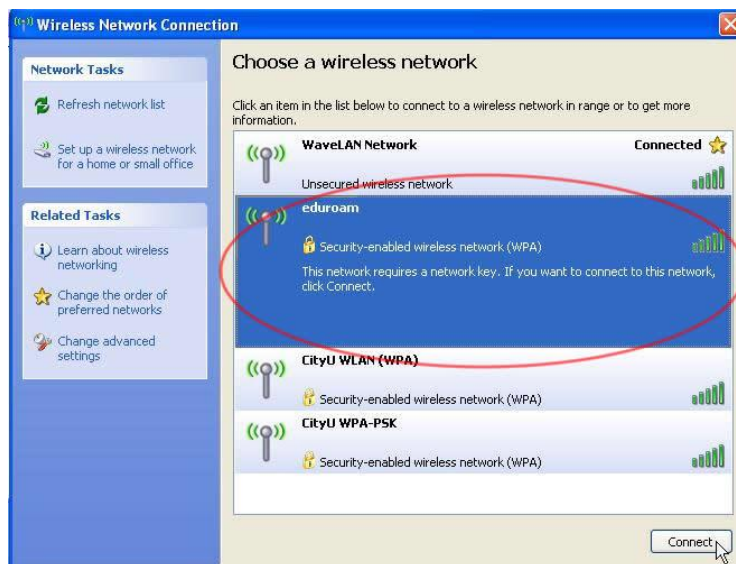
1. Make sure you have created the corresponding connection profile for the desired wifi network as described above before trying to establish wifi connection.

Click on the "**View Wireless Networks**" button in the the "**Wireless Network**

Connection Properties" window.



2. The "Wireless Network Connection" window shows all available wireless network. Select the "eduroam" or "Universities WiFi" and press the "Connect" button to establish wireless LAN connection.



Wait until you see a small dialog box in the system tray asking you to click and make connection to the selected wifi network.



3. Right-click the icon and you will be prompted for the credentials. Enter your login name, password and leave the "**Logon domain**" box empty to establish the connection. For CityU users, please append the "**@cityu.edu.hk**" to your Network Connection Account as the user name.



4. You can access the Internet upon successful login.

**Important:** When you successfully log on to network using PEAP, your credentials are automatically stored in the computer for later use. Hence, the system will not ask for your credentials next time your wireless device connecting to the wireless LAN. If you want to be prompted for the credentials again, you will have to clear the cached credentials manually. Please visit <http://support.microsoft.com/kb/823731> for details.