

Installation Guide for using 802.1x (WPA) on Windows Vista at Hotspots

This manual helps you set up your notebook computer at Wi-Fi hotspots (PCCW Wi-Fi or Y5Zone). You should have the following items:

- Windows Vista installed in the notebook computer
- Built-in or an External Wireless Network Interface Card (IEEE 802.11b or g compatible)
- CityU Network Connection Account or valid Wireless LAN Login Account of full-time CityU students and staff

Step 1: Wireless Network Card Installation

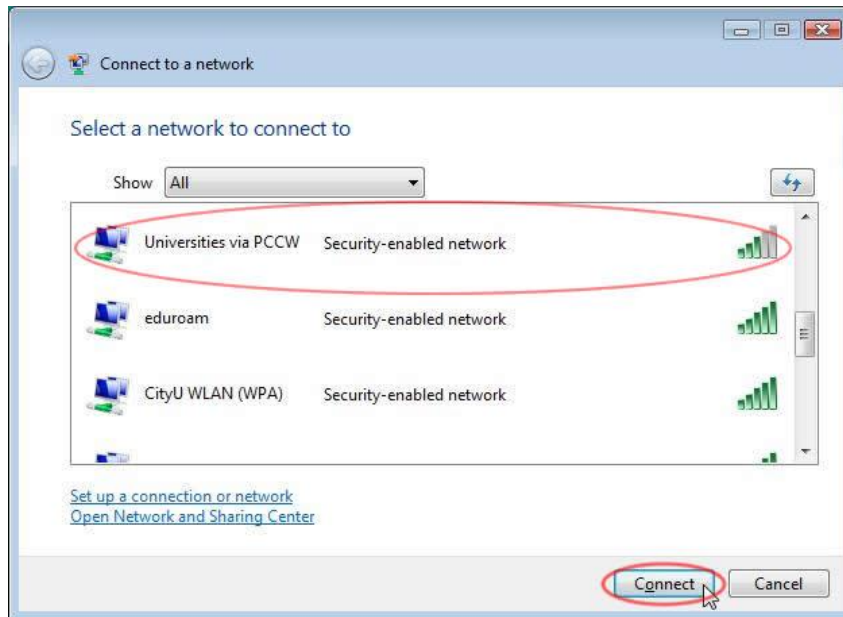
1. If your computer has a built-in WLAN card, the bundled Windows Vista will recognize it and you may skip to step 2.
2. If you are using an external WLAN card, you can insert your WLAN interface card into the computer.
3. Turn on the computer and Windows Vista will detect the card and install the driver automatically.

If you are using a WLAN card that is not recognized and supported by Windows Vista natively, you may install the driver manually. Please follow the steps described in the installation guide that comes with your WLAN card.

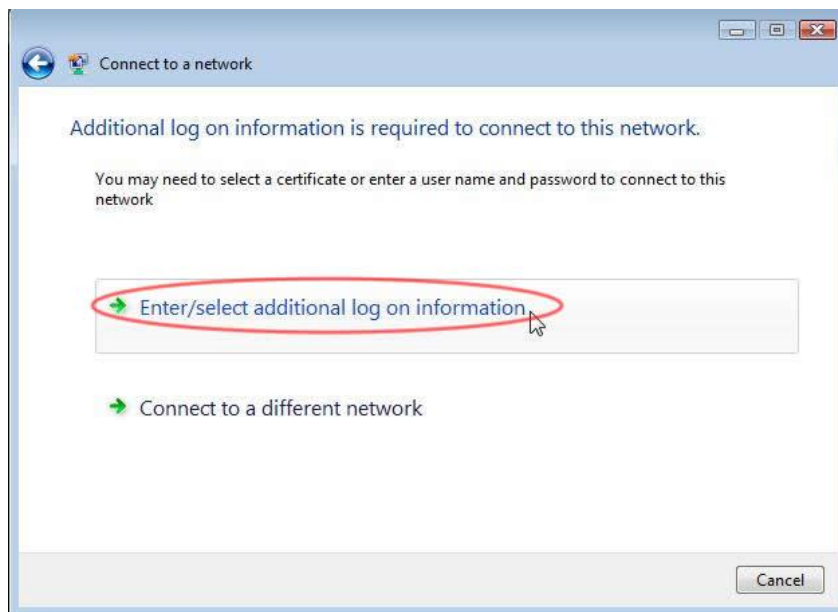
Step 2: Connecting to "Universities via PCCW" or "Universities via Y5ZONE "



1. Click the  and select "**Connect to**" from the start menu. Scroll down and search for the "**Universities via PCCW**" or "**Universities via Y5ZONE**" network.



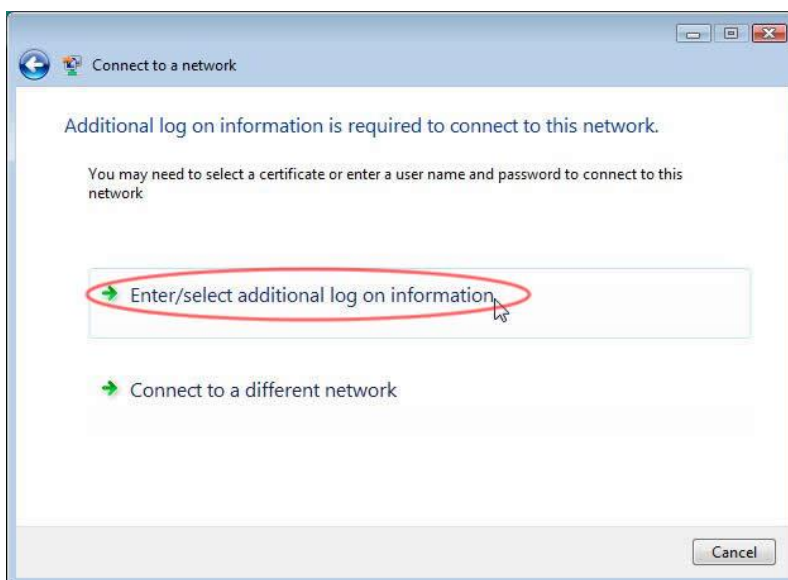
2. Select the corresponding network and click the "**Connect**" button to establish connection. A screen saying that additional log on information is required to connect to this network.



Click on the "**Enter/Select additional log on information**" option and a dialog box asking for your credentials will be shown. Enter your user name and password for verification. Since you are using your home institution (CityU in our case) accounts for verification, you need to add "**@cityu.edu.hk**" in the user name.



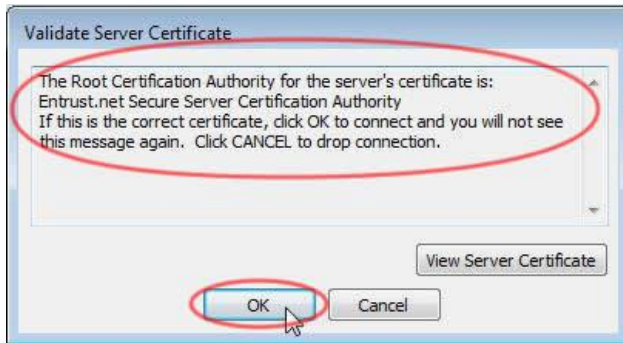
Select "**Enter/select additional log on information**" option again in the next screen.



"**Validate Server Certificate**" screen will pop out. The Root Certification Authority for the WLAN server's certificate is either

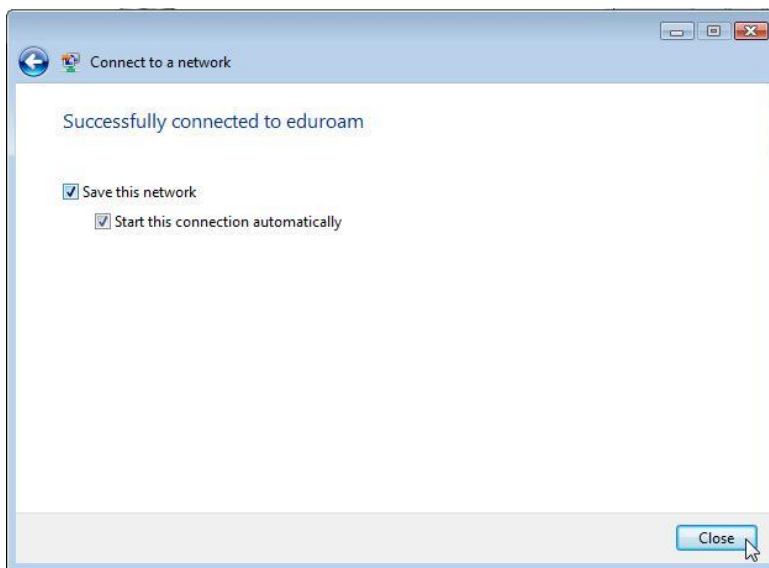
- A. **Entrust.net Secure Server Certification Authority** or
- B. **DigiCert High Assurance EV Root CA**

Example:




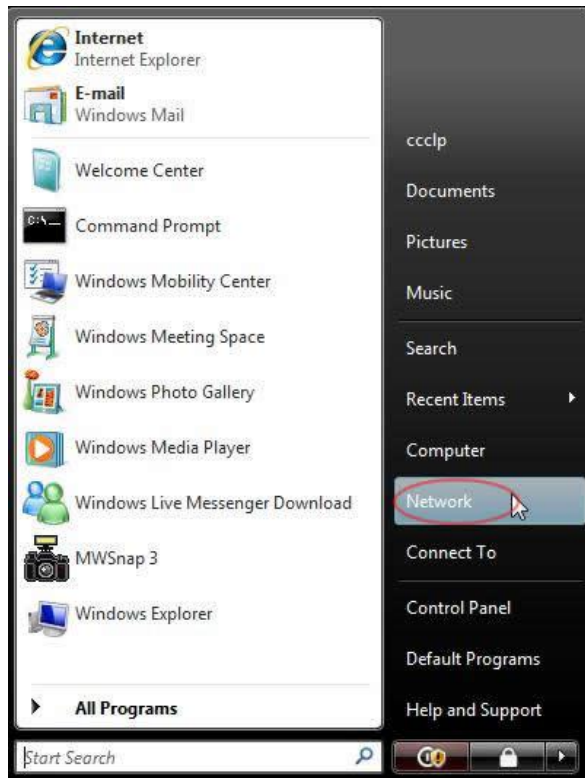
Press "**OK**" if the information shown is correct, otherwise you may properly connect to a rogue/unknown server and you should **Cancel** the connection immediately.

3. You can now access the Internet upon successful login. You may want to save this configuration and automatically login whenever the **Universities via PCCW** or **Universities via Y5ZONE** network is detected:

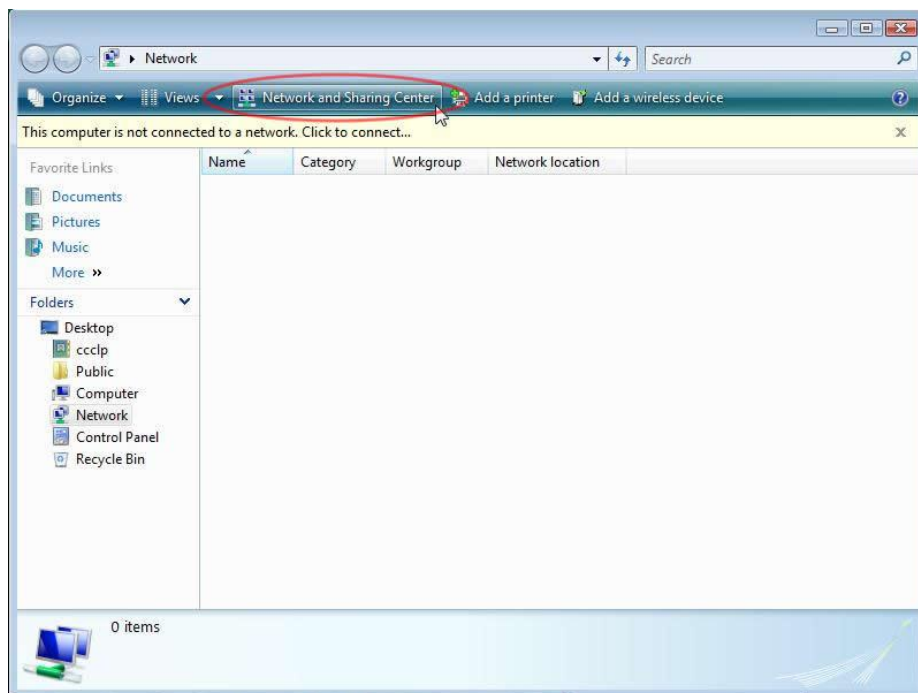


4. By default, your credentials are automatically stored in the computer for later use. Hence, the system will not ask for your credentials the next time your wireless device connecting to the **Universities via PCCW** or **Universities via Y5ZONE** . If you want to be prompted for the credentials every time establishing a connection, please follow the steps below as such your credentials will not be stored.

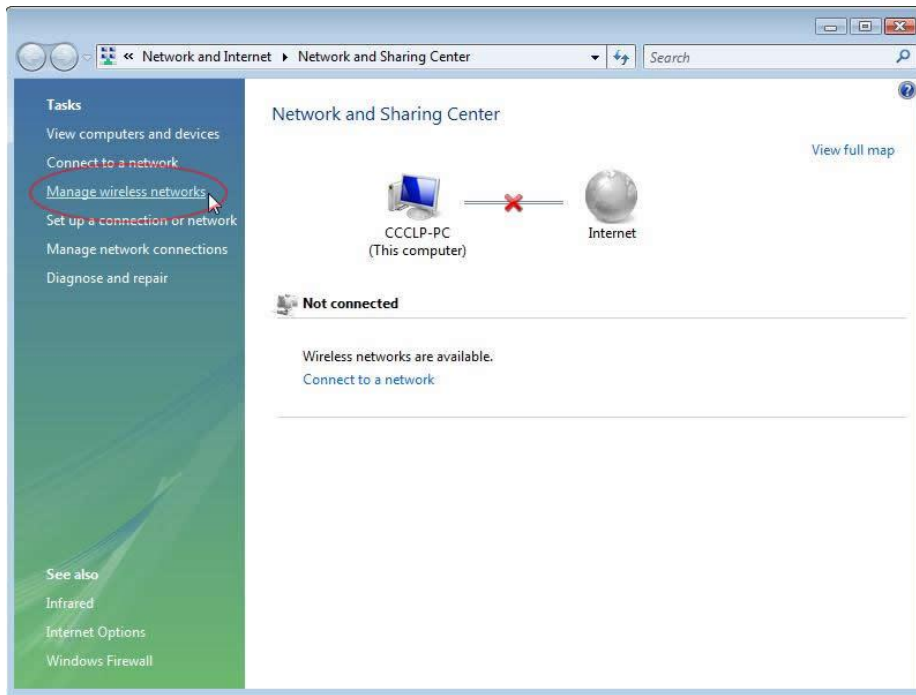
Click the  button and select "**Network**".



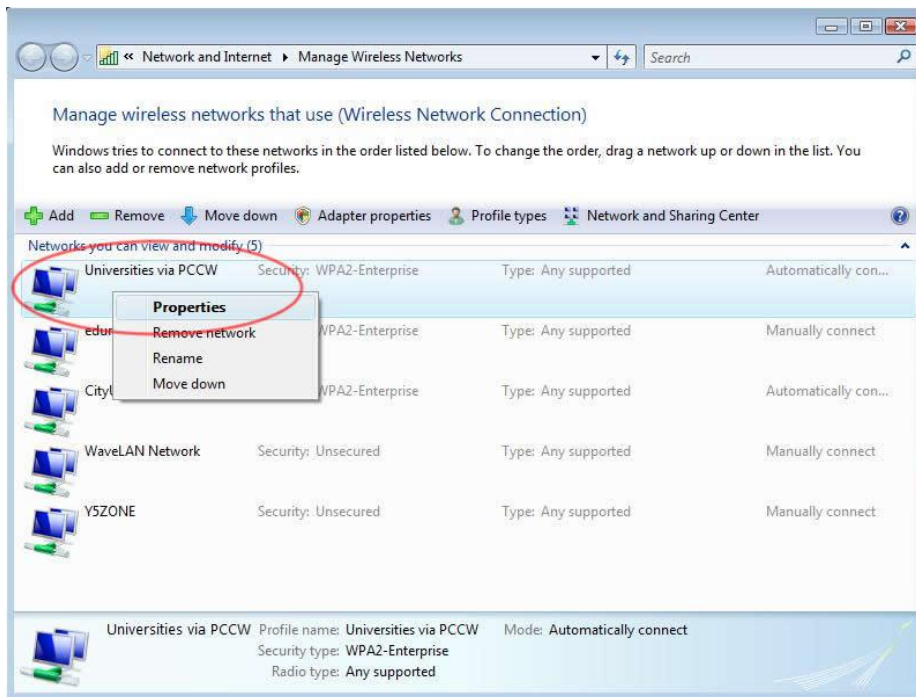
Select **"Network and Sharing Centre"**.



Select **"Manage wireless networks"**.



You will see the available profiles created in the previous steps. Right-click "Universities via PCCW" or "Universities via Y5ZONE" and select "Properties" option.



Select the "Security" tag and uncheck the "Cache user information for subsequent connections to this network". Set Encryption type to "TKIP" and press "OK" to save the setting.

