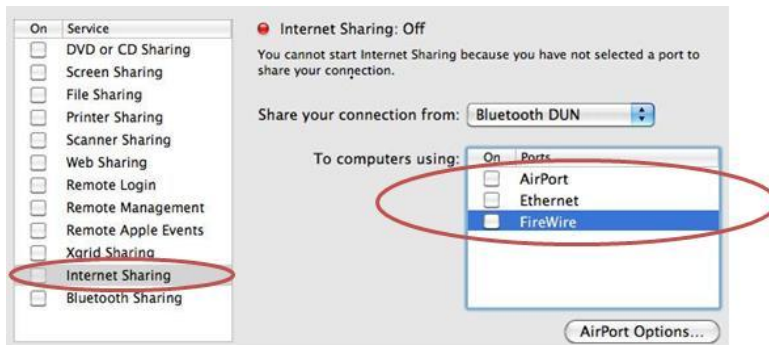



Setup Guide for MacBook

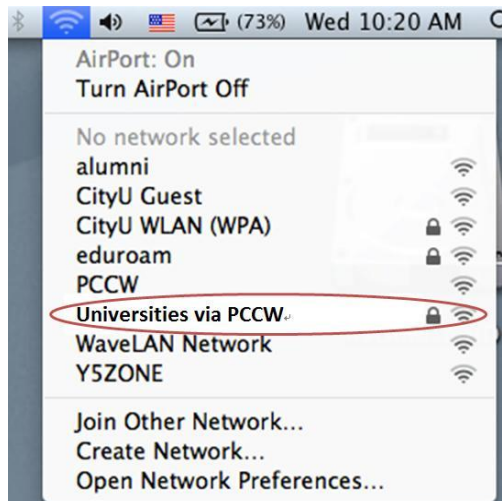
Step 1: Disable Internet Sharing

There is a useful feature in Mac OS X that allows you to share your Internet connection. However it will create serious network security problem and will interfere other users in our campus network. Therefore it is strongly recommended to turn off the "Internet Sharing" of your MacBook before connecting it to the CityU wireless network.



Step 2: Connecting to "Universities via PCCW " or "Universities via Y5ZONE"

a) Click on the "**Wireless Network icon**"  to list the available wireless networks in range and then select the "**eduroam**" or "**Universities WiFi**" network.



b) Wait until you see the logon window to prompt you for the login name and password. Enter your **EID** plus "**@cityu.edu.hk**" (i.e. "EID@cityu.edu.hk") and **network connection password** to login. You can now access the Internet upon successful logon.