

About ACE

The Department of Architecture and Civil Engineering at the City University of Hong Kong is unique in Hong Kong, as we offer a broad spectrum of construction-related programmes, from architecture to civil engineering, building services engineering (or architectural engineering) and surveying, within a single department. With this advantage, students are not only able to acquire professional knowledge of their chosen discipline of study (e.g. architecture), but they can also interact with students of other programmes (e.g. civil engineering) to broaden their horizon. The interdisciplinary knowledge and team working ability have made our graduates very sought after in the construction industry.

Our Facilities



Built-informatics and Smart Cities Cluster (BISCC)	Heavy Structures Testing Laboratory
Soil Mechanics and Geology Laboratory	HVAC and Fire Services Laboratory
Waste Water Treatment Laboratory	Aerodynamic Laboratory
Structural Vibration Laboratory	ArchMakers Lab

Our Professional Recognitions

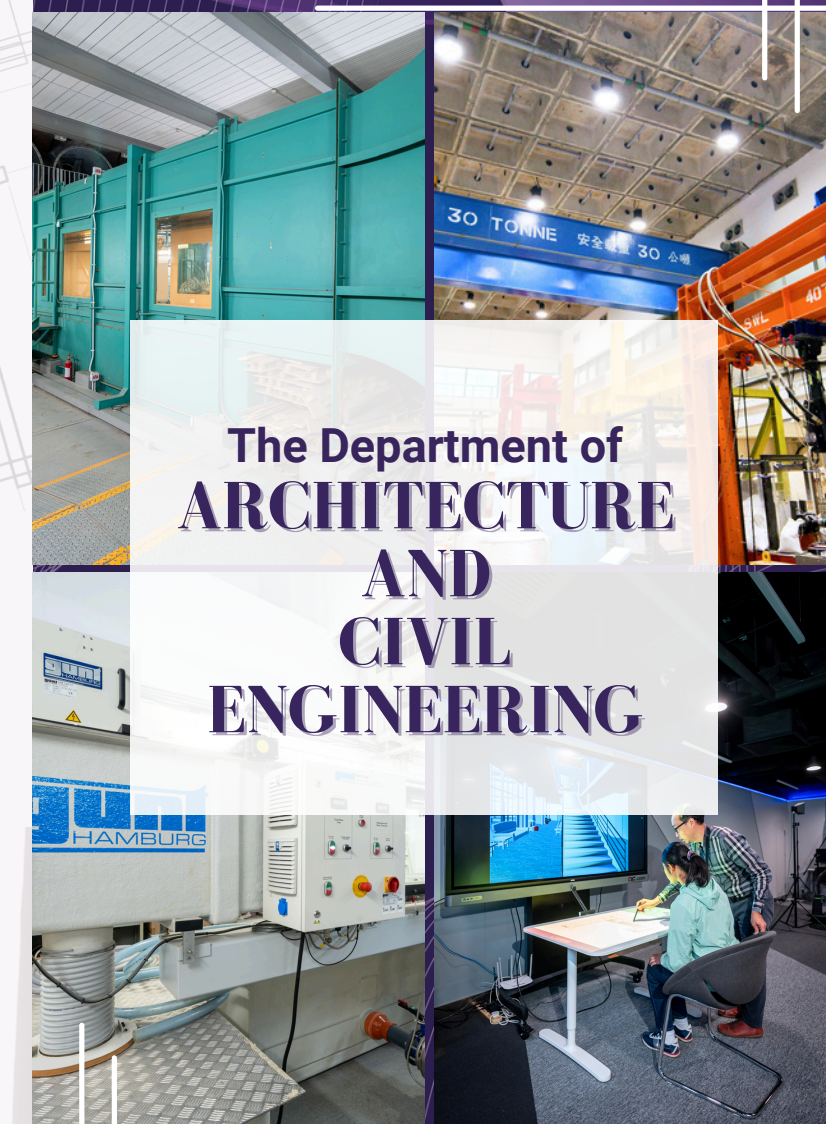
The MUDP programme is fully accredited by the Hong Kong Institute of Surveyors (HKIS), the Royal Institution of Chartered Surveyors (RICS) and the Hong Kong Institute of Urban Desing (HKIUD). The MSCM programme is also accredited by RICS in the form of partnership. We anticipate that the MArch programme will receive accreditation from the Hong Kong Institute of Architects (HKIA) and the Architects Registration Board (ARB) by the end of 2026.

Course Features

- ◆ Short duration of study with Master of Science full-time programme (MSCM & MSCAE) graduating in one year.
- ◆ Strong faculty.
- ◆ Focus on future-oriented information technology.
- ◆ Good professional direction.
- ◆ A lot of opportunities for exchange and learning.
- ◆ Good employment prospects and considerable income.
- ◆ Non-local graduates can apply for a two-year work permit to stay in Hong Kong.



Example of student work (MArch)



The Department of ARCHITECTURE AND CIVIL ENGINEERING

Meet the World's Challenges
Build TOMORROW
Create THE FUTURE




B6301, 6/F,
Yeung Kin Man Academic Building,
City University of Hong Kong,
83 Tat Chee Avenue,
Kowloon Tong,
Hong Kong


3442 7609


<https://www.cityu.edu.hk/ace>


acedept@cityu.edu.hk



 Ace CityUHK



 城大建筑学及土木工程学系



 cityuhk_ace



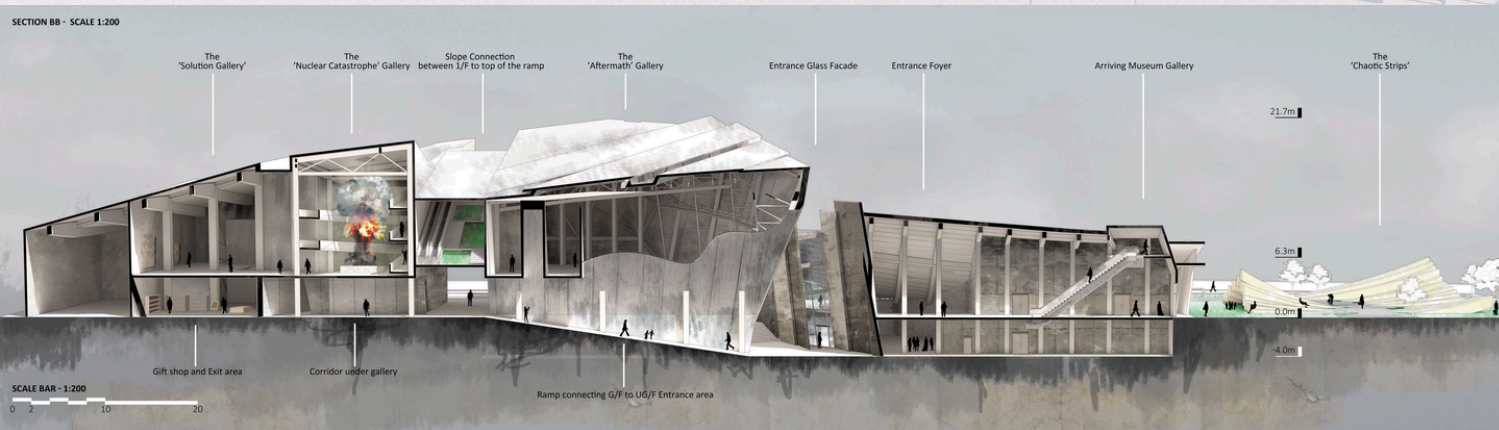
 建筑学及土木工程学系

Master of Architecture (MArch)

This programme aims to provide advanced architectural education for graduates holding a pre-professional degree in architecture. It equips students with the critical knowledge and technical skill sets needed for professional practice in the field. Through a theme-based, evidence-driven curriculum, students engage with contemporary challenges such as sustainability, urban planning, and responsible design. The course serves as a multidisciplinary platform for collaboration across related fields, including civil engineering, building services, urban planning, and urban design. By fostering analytical thinking, hands-on application, and design research, the programme cultivates a professional mindset geared toward innovation and excellence in architectural practice.

Nominal period of study: 2 years (full time)

In addition, the Department will invite experienced architects and professionals from Mainland China to provide seminars and talks to assist students in preparing for the Class I Registration Examination for Architects in China.



Example of student work (MArch)

Master of Urban Design and Regional Planning (MUDP)

The programme aims to enhance existing construction related professionals with the knowledge of urban design and regional planning, to produce experts with comprehensive knowledge of urban design and regional planning, to offer a route for further study to graduates of construction related disciplines. The course provides a multi-disciplinary approach for architecture, civil engineering, urban design, urban planning, building services and construction professionals, and equip students with the skills for carrying out research works in various related disciplines.

Nominal period of study: 2 years (full time)

There are boundless opportunities for growth and innovation including design workshops in collaboration with prestigious universities such as Tongji University, IUAV University of Venice, EPFL, etc.



Explore our programmes and admissions site for all the details, or reach out to ACE with any questions. Join us at ACE and embark on an exciting journey towards your future!

Master of Science in Construction Management (MSCM)

The programme aims to provide students with the environment to develop their intellectual, analytical and critical abilities and to enable them with the latest technologies to exercise these abilities in the built environment and the international project management field. It helps to provide a basis for continuing professional development and encouragement for professional specialization in the local construction industry. This platform is achieved by maintaining balance activities among research, intellectual and professional developments. It develops qualified and experienced real estate and construction professionals to become professional managers and leaders in the field with the management principles and advanced techniques required for the effective management of the real estate development and construction process. It also develops the potential professional manager's leadership, maximising quality attainment in the built project, and developing the international vision on the project management field.

Nominal period of study: 1 year (full time)

**Two Streams:
Construction Project Management Stream /
Digital Construction Management Stream**

What our Alumni says:



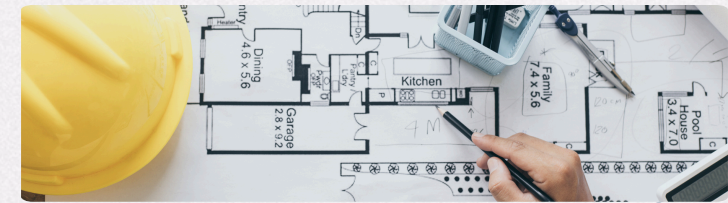
**Ms. LI Yuxuan
(MSCM Graduate, 2024)**

"The school has a strong faculty and often invites various professors to give free lectures on campus. In summary, studying here is very helpful!"

"In terms of internships, the university offers us many opportunities. We can choose to intern at companies recommended by the school."

Master of Science in Civil and Architectural Engineering (MSCAE)

The programme aims to upgrade existing construction related professionals with the knowledge of advanced civil engineering as well as building environment and sustainability, nurturing experts in all aspects of civil engineering, building services engineering, and environmental engineering. It provides a route of continuing education to graduates of construction related disciplines, develops civil engineering, building services engineering and construction professionals with a multi-disciplinary problem-solving skill and mindset; and conduct research in various construction related disciplines.



Nominal period of study: 1 year (full time)

**Two Streams:
Civil Engineering Stream /
Building Environment and Sustainability Stream**

What our Alumni says:



**Ms. LIU Xinwei
(MSCAE Graduate, 2024)**

"The Civil and Architectural Engineering programme has not only equipped me with advanced technical expertise but also fostered critical soft skills that will shape my professional journey."

"I gained a thorough knowledge of Geotechnical Engineering, Local Engineering Contracts and BIM applications, which bridged theoretical concepts with real-world challenges."

